

写真図版



1. 発掘調査前（東から）



2. アスファルト除去
作業中（西から）



3. アスファルト除去後
（東から）



調査区全景（北から）



1. A地区上層面全景（北から）（北から）



2. A地区下層面全景（北から）



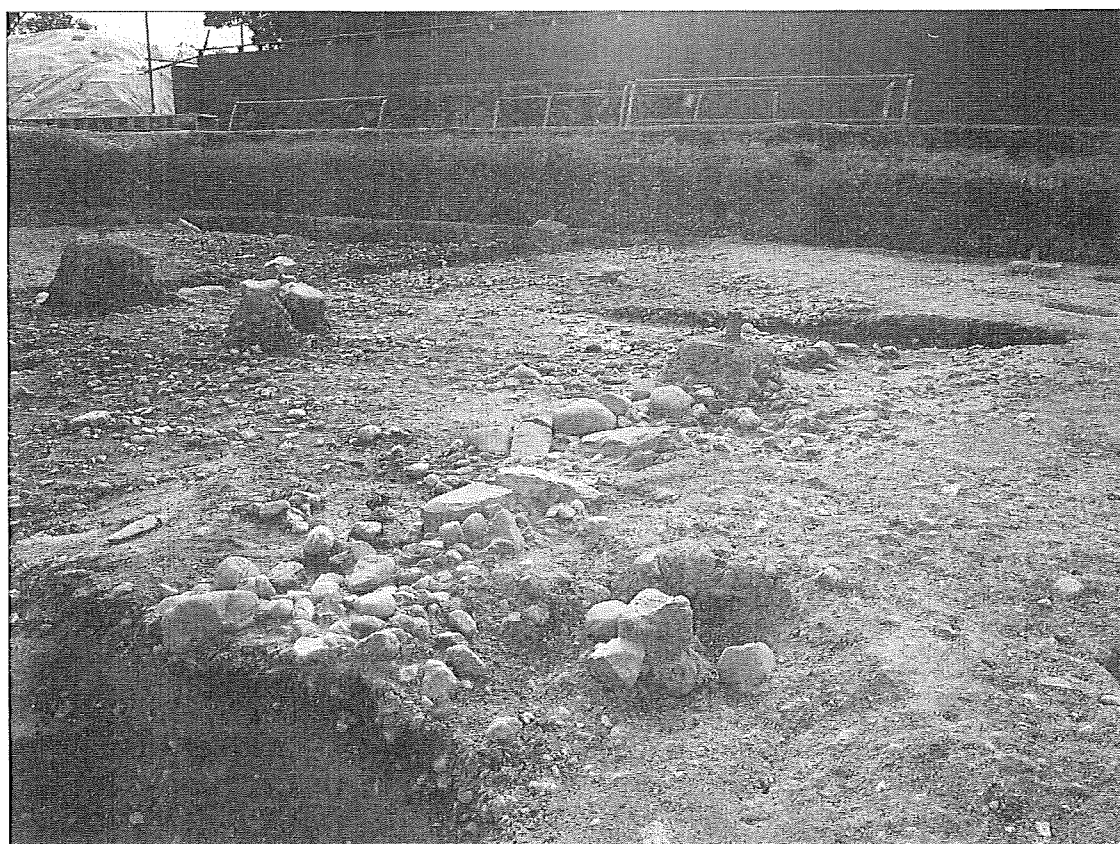
1. A地区下層面全景（北東から）



2. B地区全景（北から）



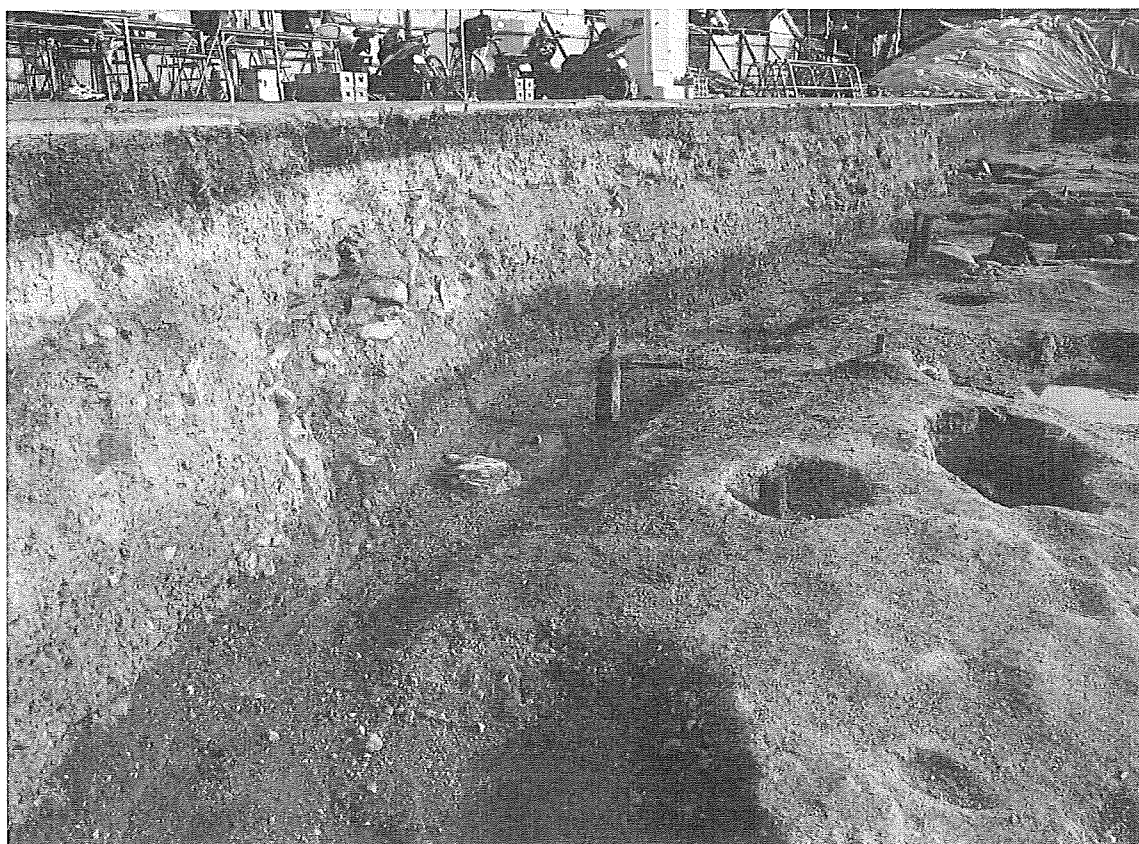
1.SG479 (南東から)



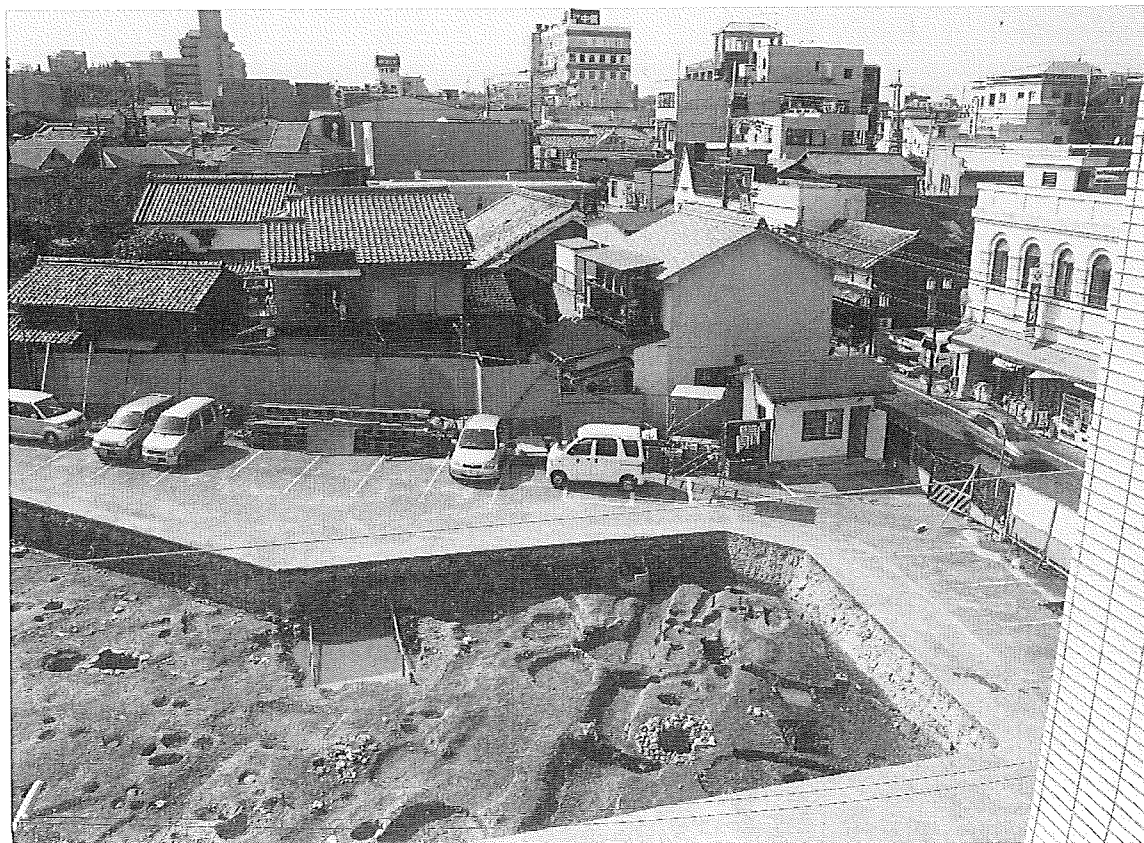
2.SG479 北汀州浜 (北東から)



1.SG494 (北から)



2.SG410 (北西から)



1.SD262・SD292 他 (北東から)



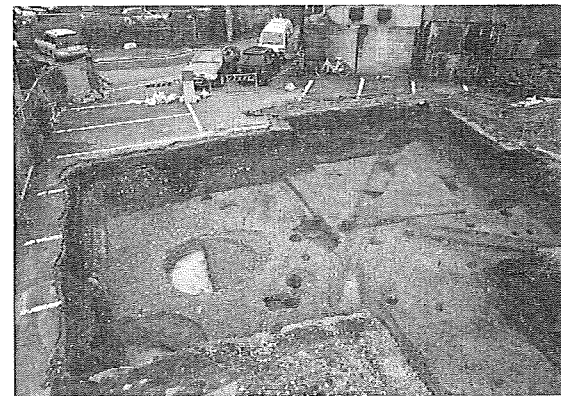
2.SD262 土層 (C-C') 断面図



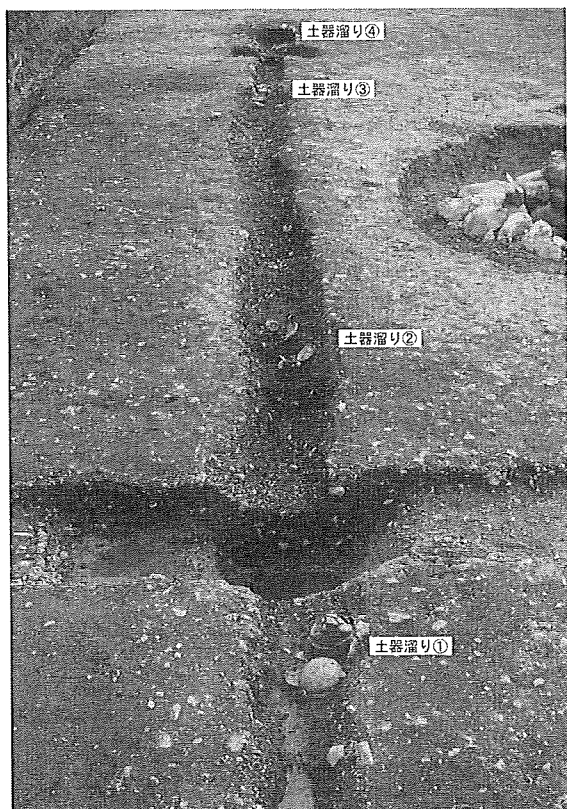
参考) 伍町通り (西から)



3.SD262 瓦器碗 (図面図版 24-304) 出土状況



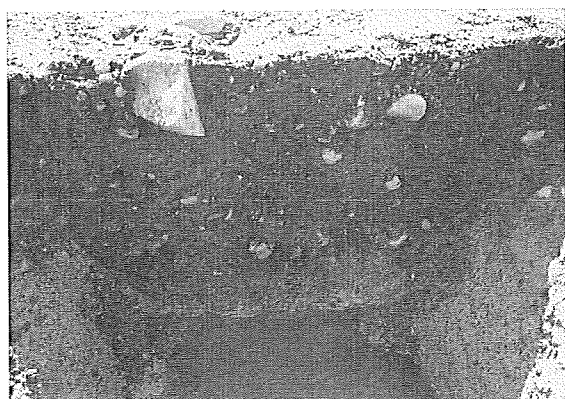
参考) 宇治市街遺跡 (宇治里尻, 平成10年度) 調査



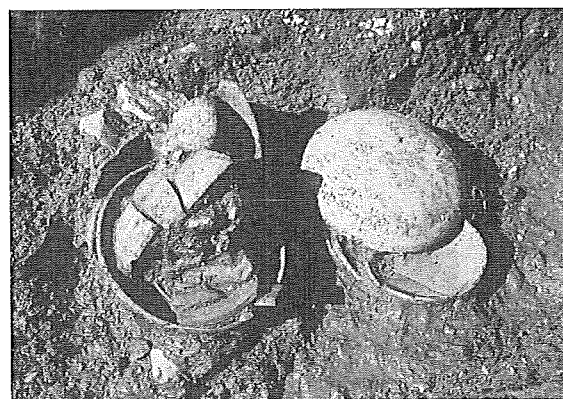
1.SD493 上層 (北から)



2.SD493 下層 (北から)



3.SD493 土層断面図



4.SD493 土器溜り① (南東から)



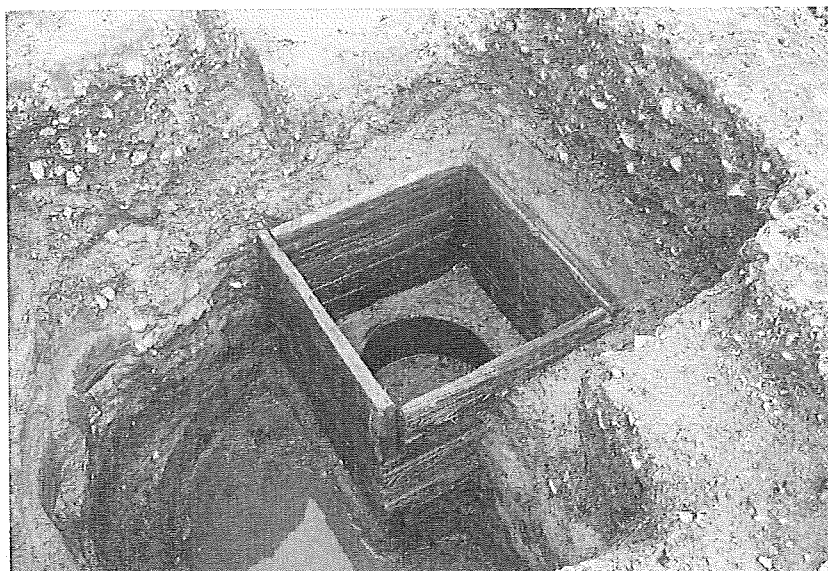
5.SD493 土器溜り② (南東から)



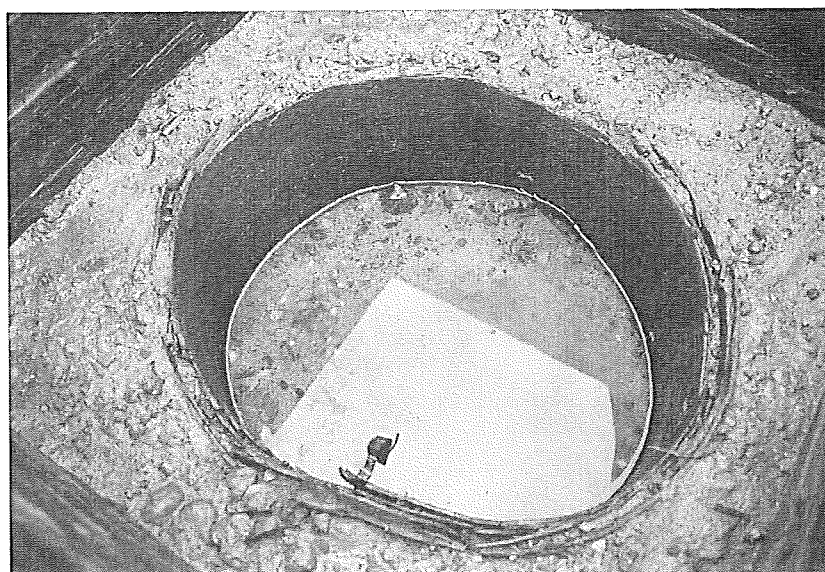
6.SD493 土器溜り③ (北西から)



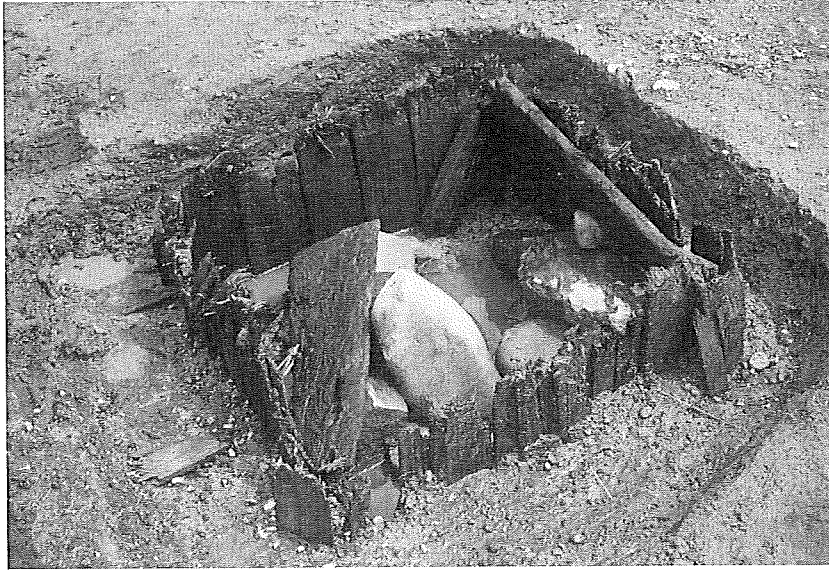
1.SE589 (西から)



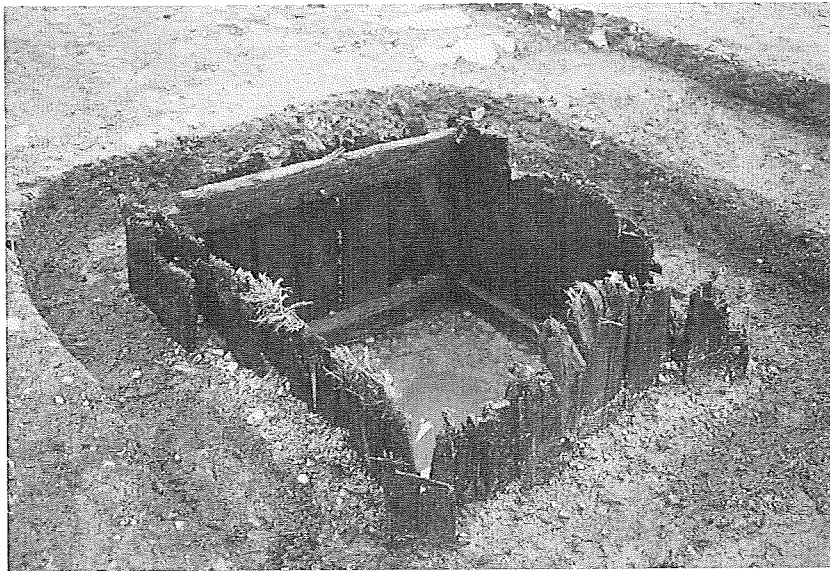
2.SE589 井上側下段部
(南東から)



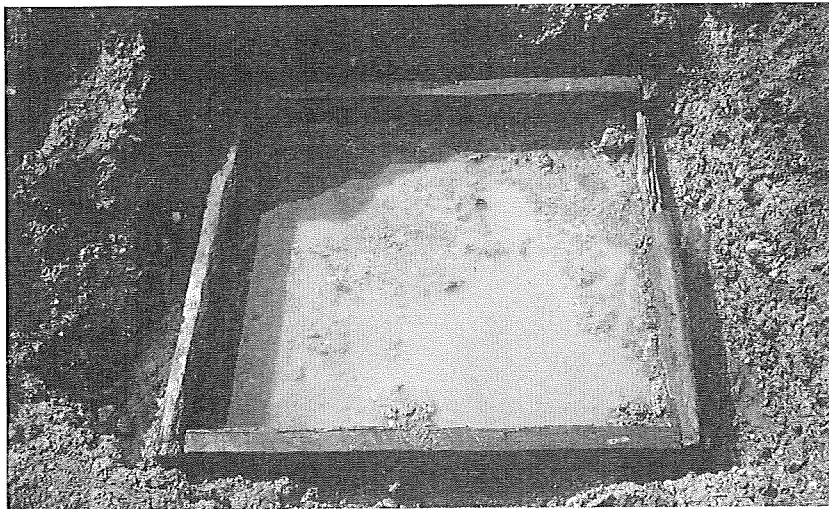
3.SE589 水溜曲物
(東から)



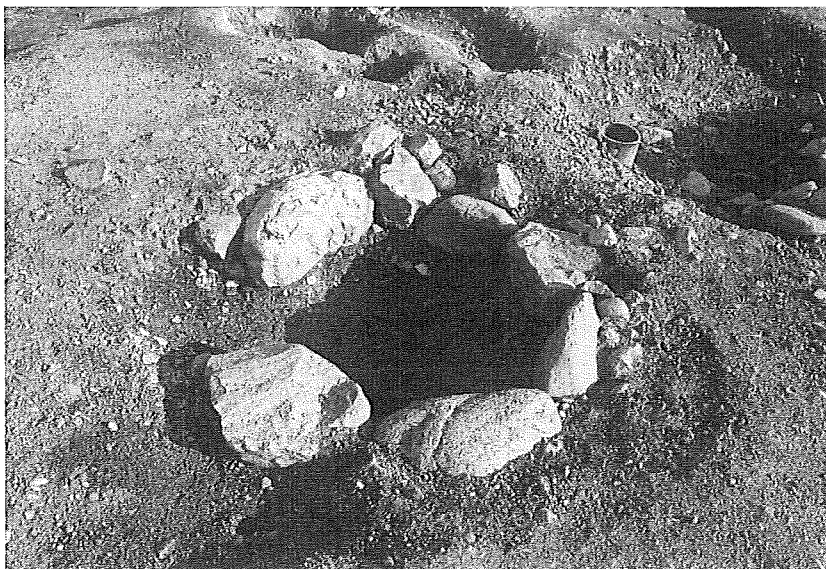
1.SE01 (北西から)



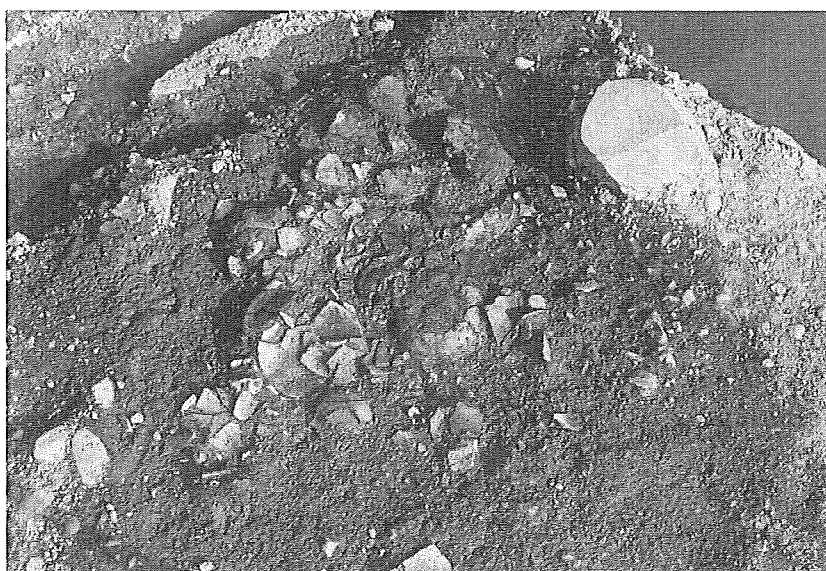
2.SE01 井戸側内遺物
除去後 (南西から)



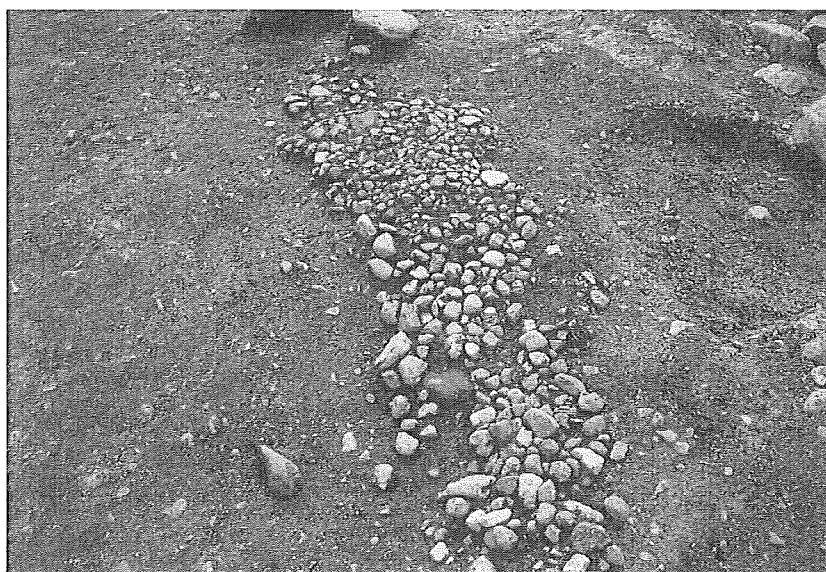
3.SE01 底部横棧 (西から)



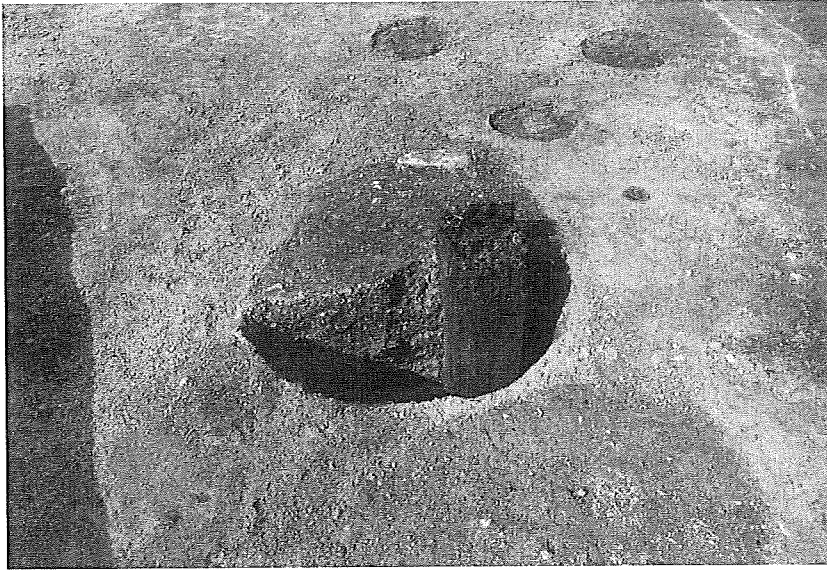
1.SX181 (北西から)



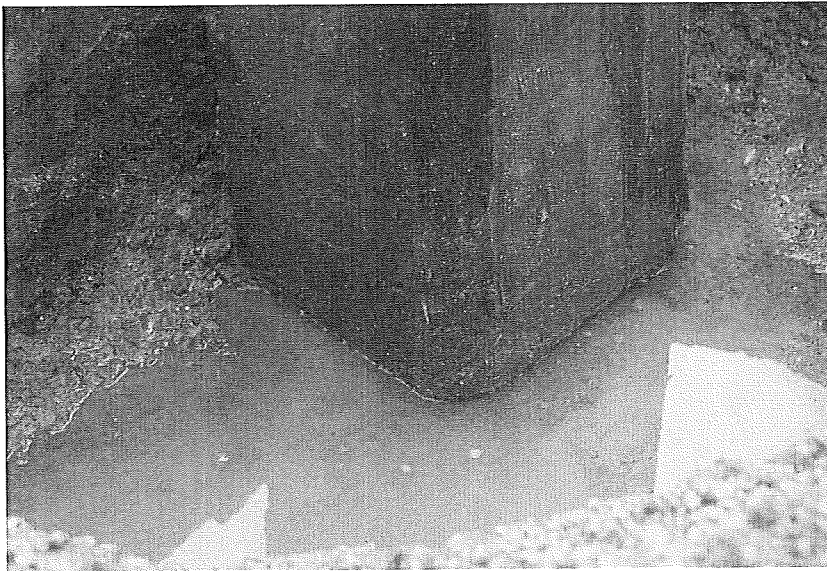
2.SX607 (西から)



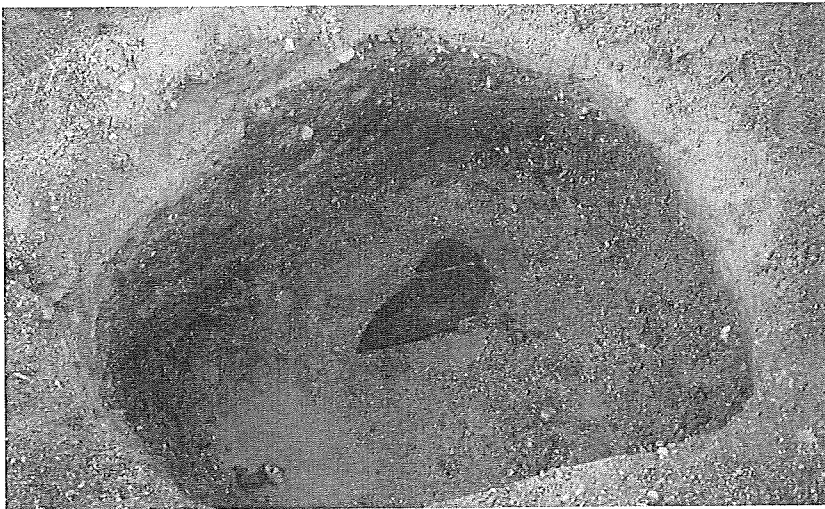
3.SK375 礫敷 (北から)



1.SP49 (南から)



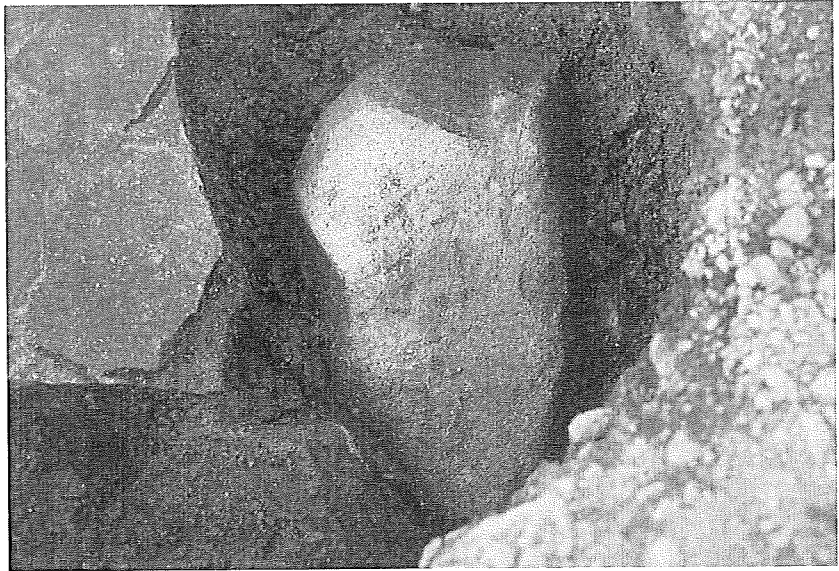
2.SP49 柱材加工痕跡
(北西から)



3.SP49 完掘後 (北西から)



1.SP398 (西から)



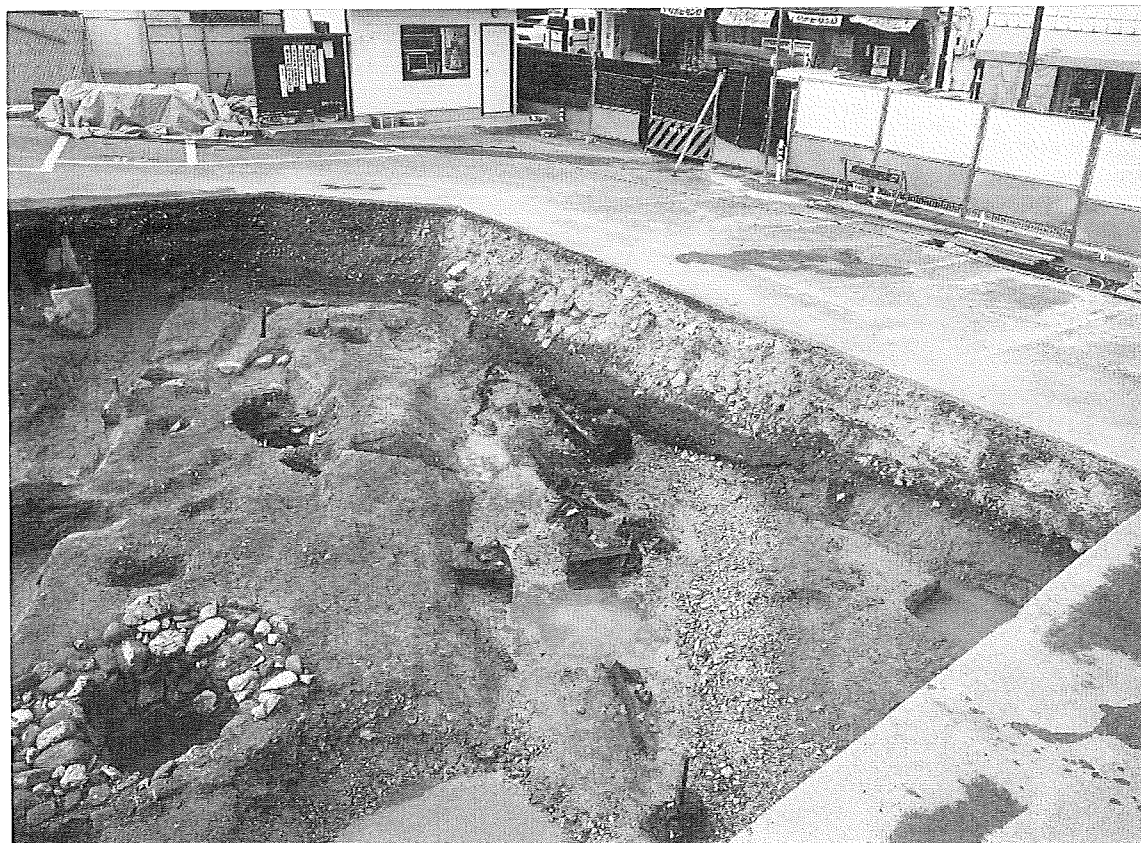
2.SP398 墨書石
(西から)



1.SD302 (南東から)



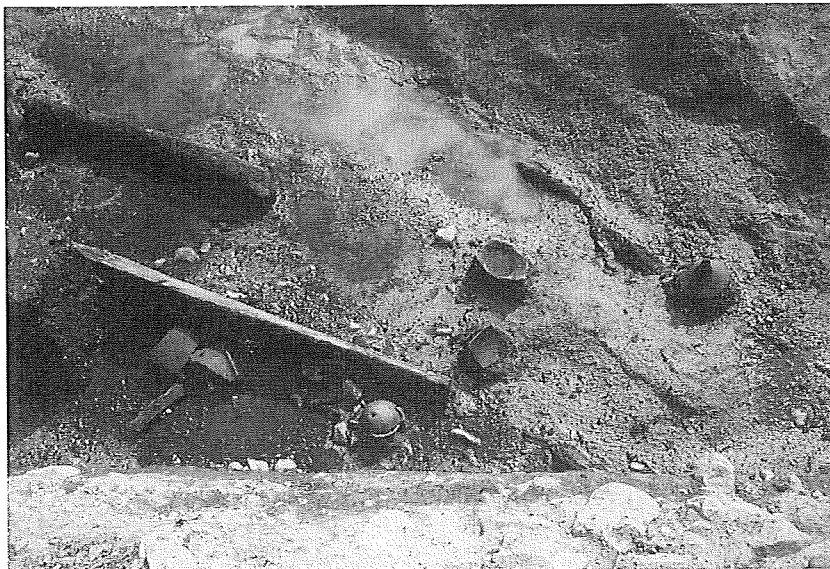
2.SD302 (南東から)



1.SD302 遺物出土状況（南東から 拡張前）



2.SD302 遺物出土状況（南から 拡張区）



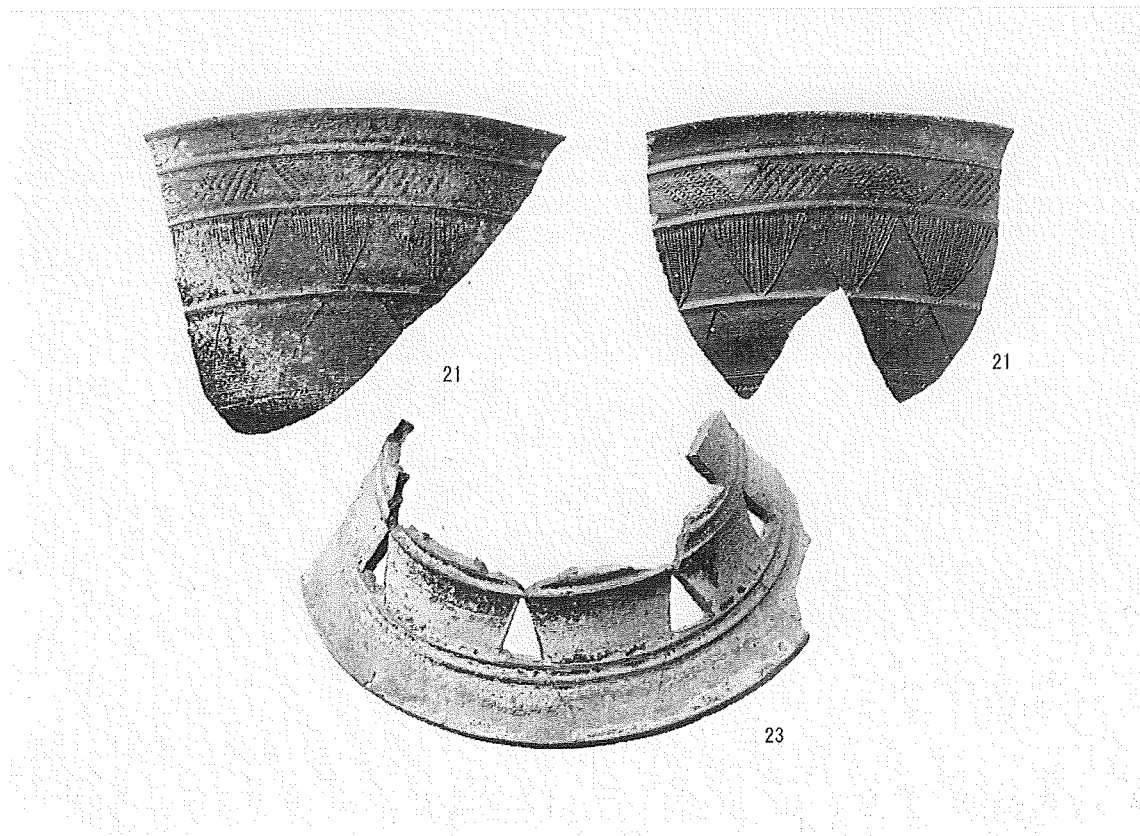
1.SD302 遺物出土状況
(北から 拡張前)



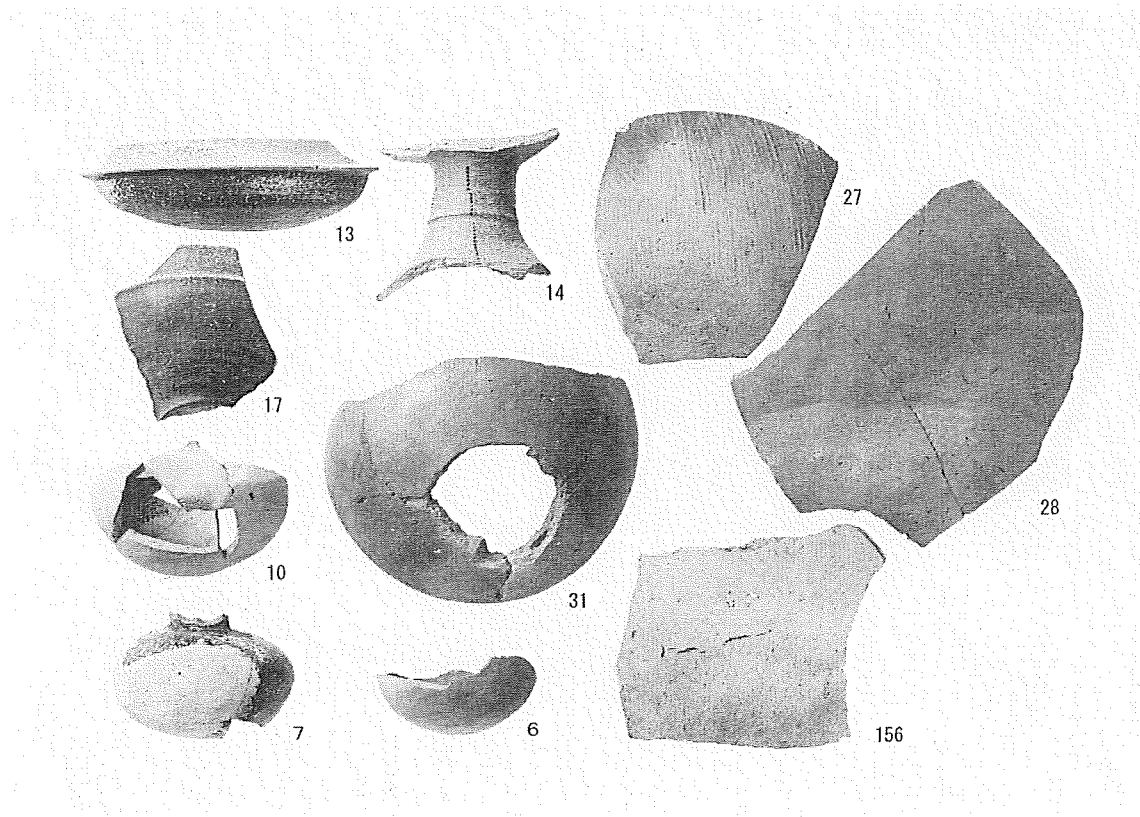
2.SD302 遺物出土状況
(北から)



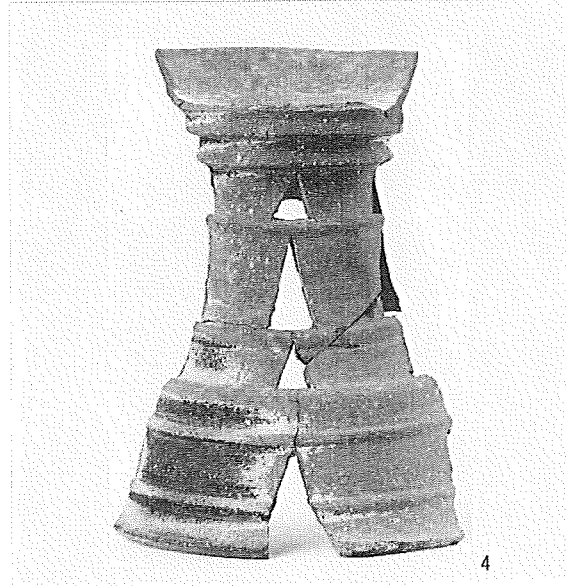
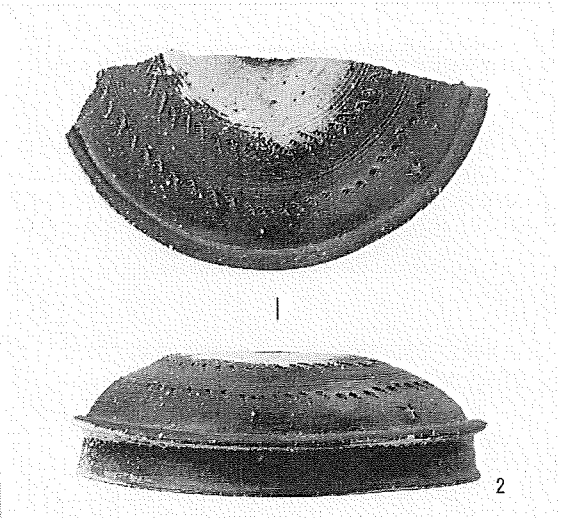
3.SD302 遺物出土状況
(北東から)

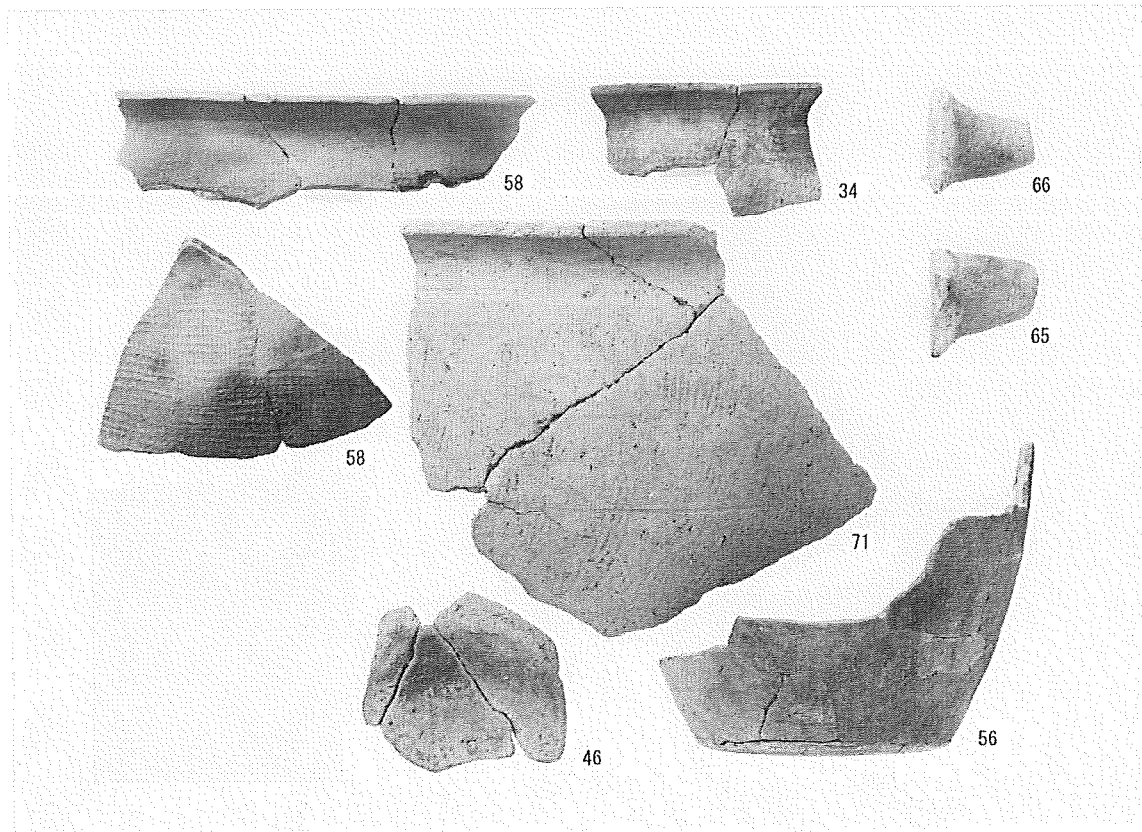


SD302

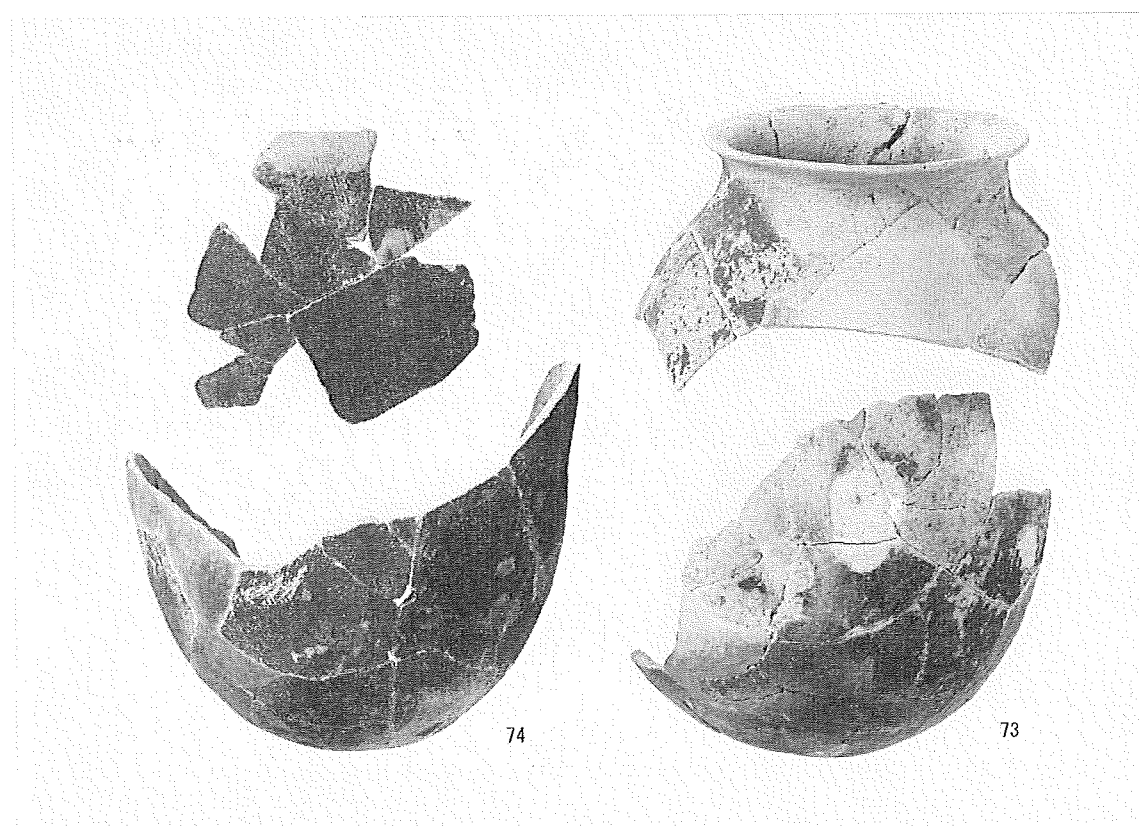


SD302

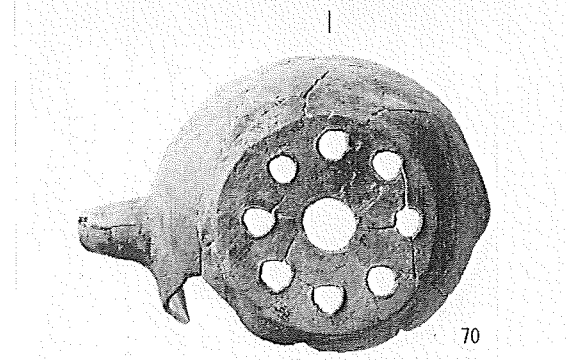
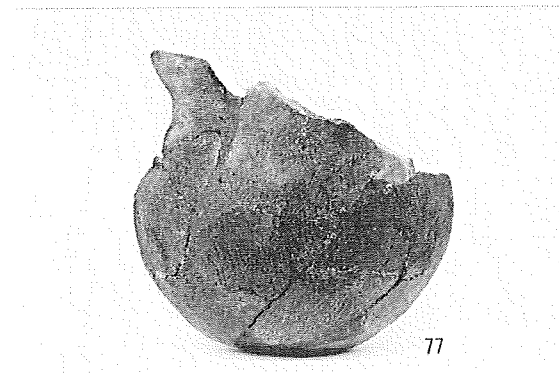
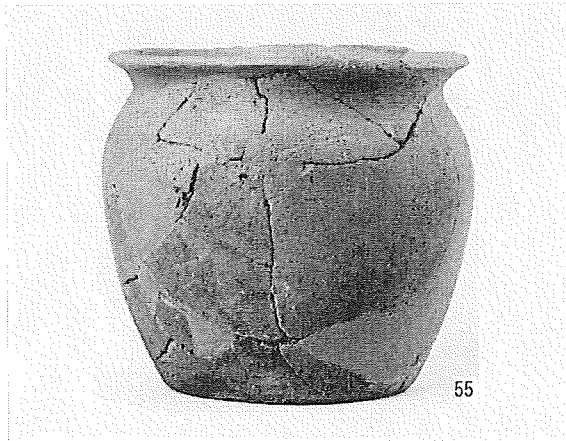


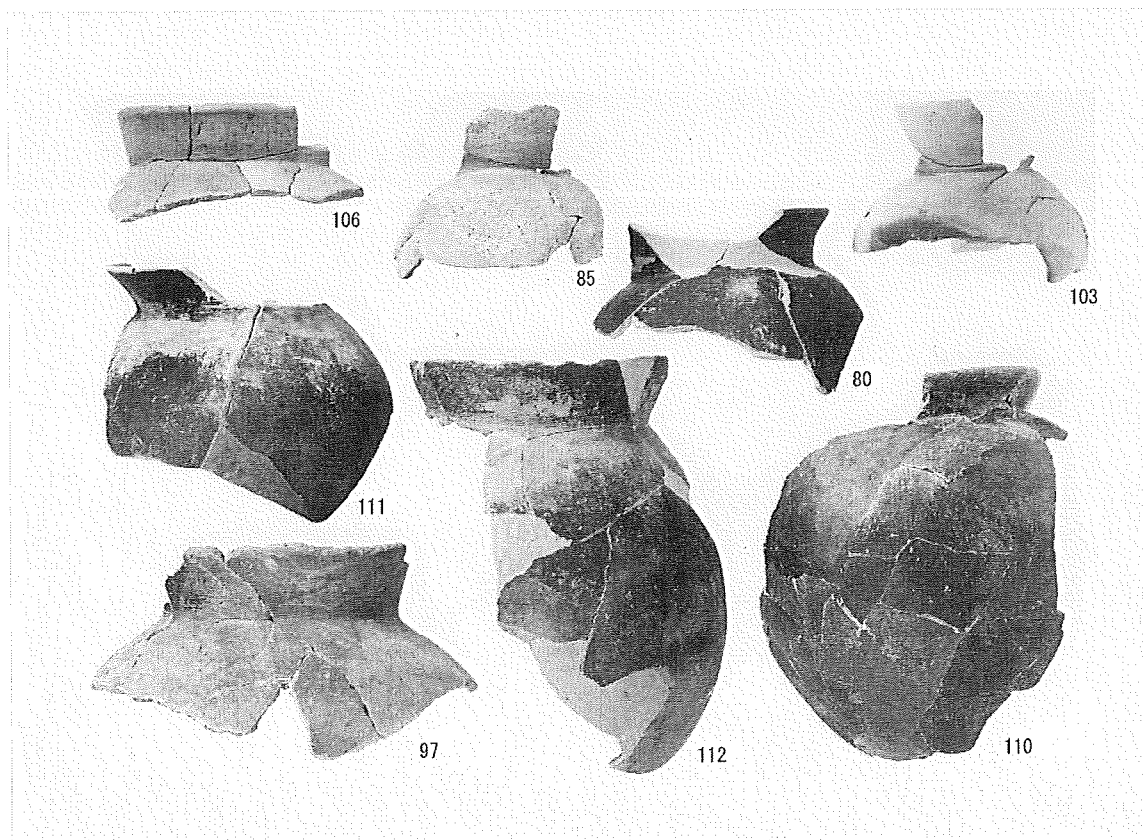


SD302

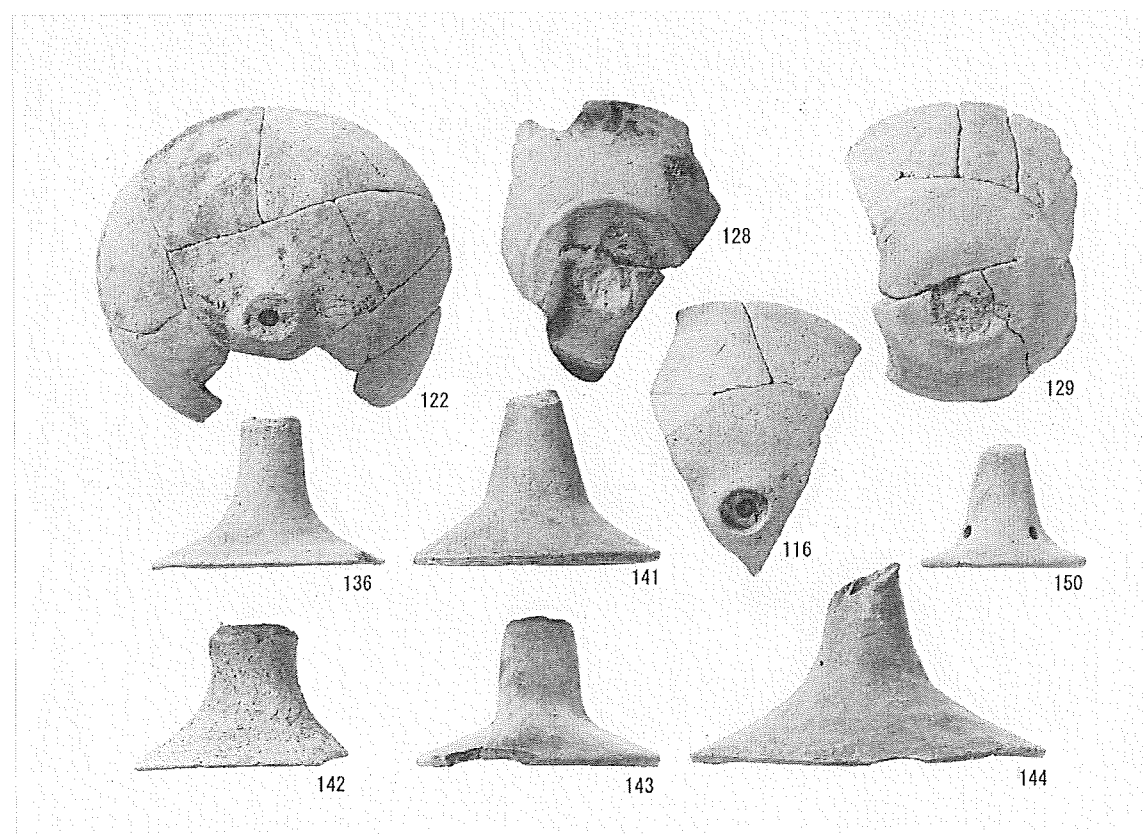


SD302

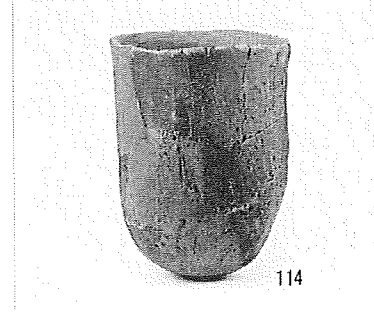
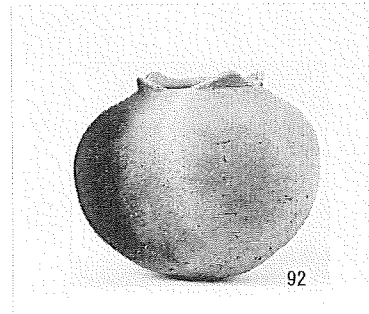
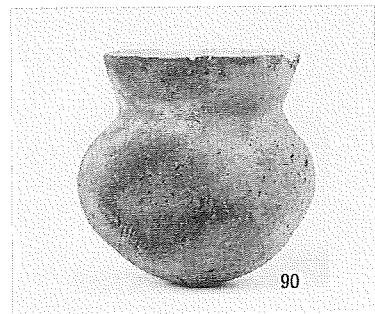
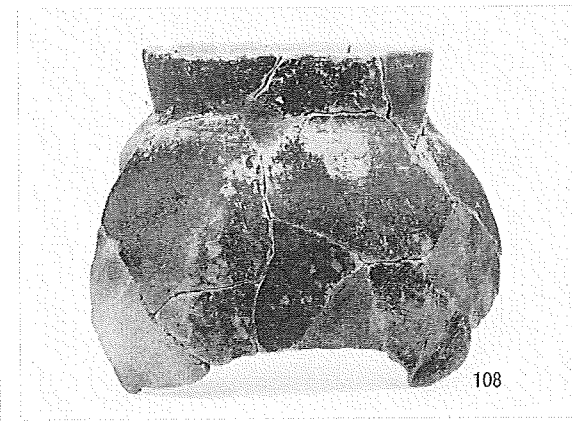
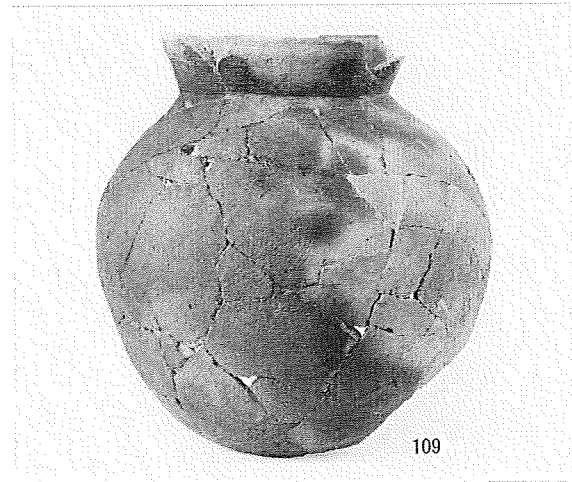
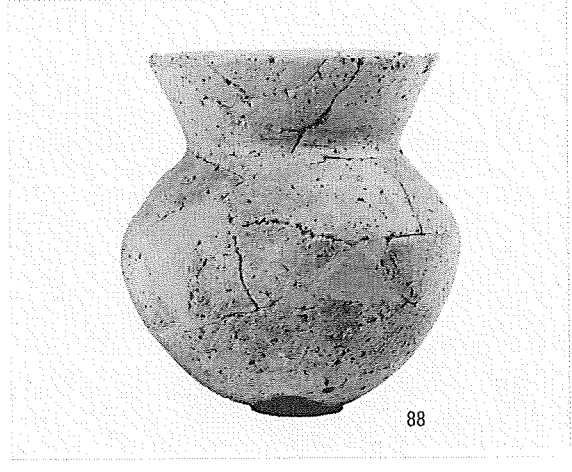


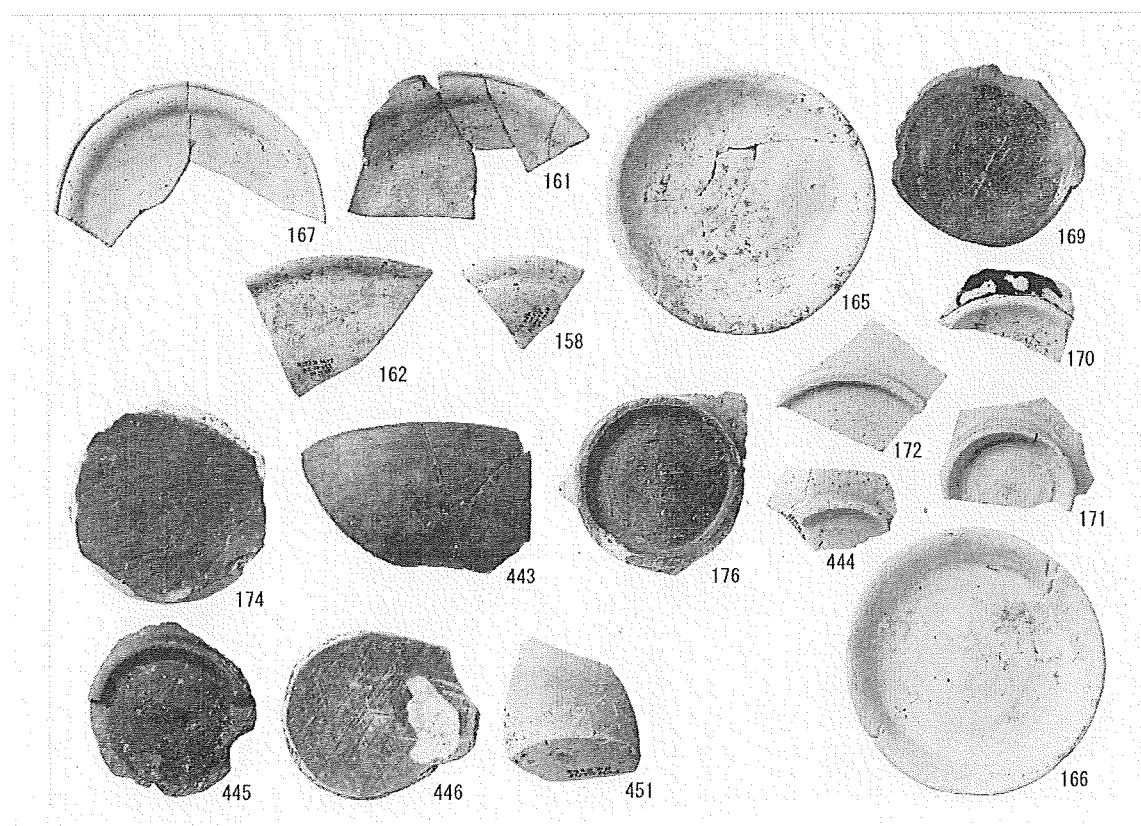
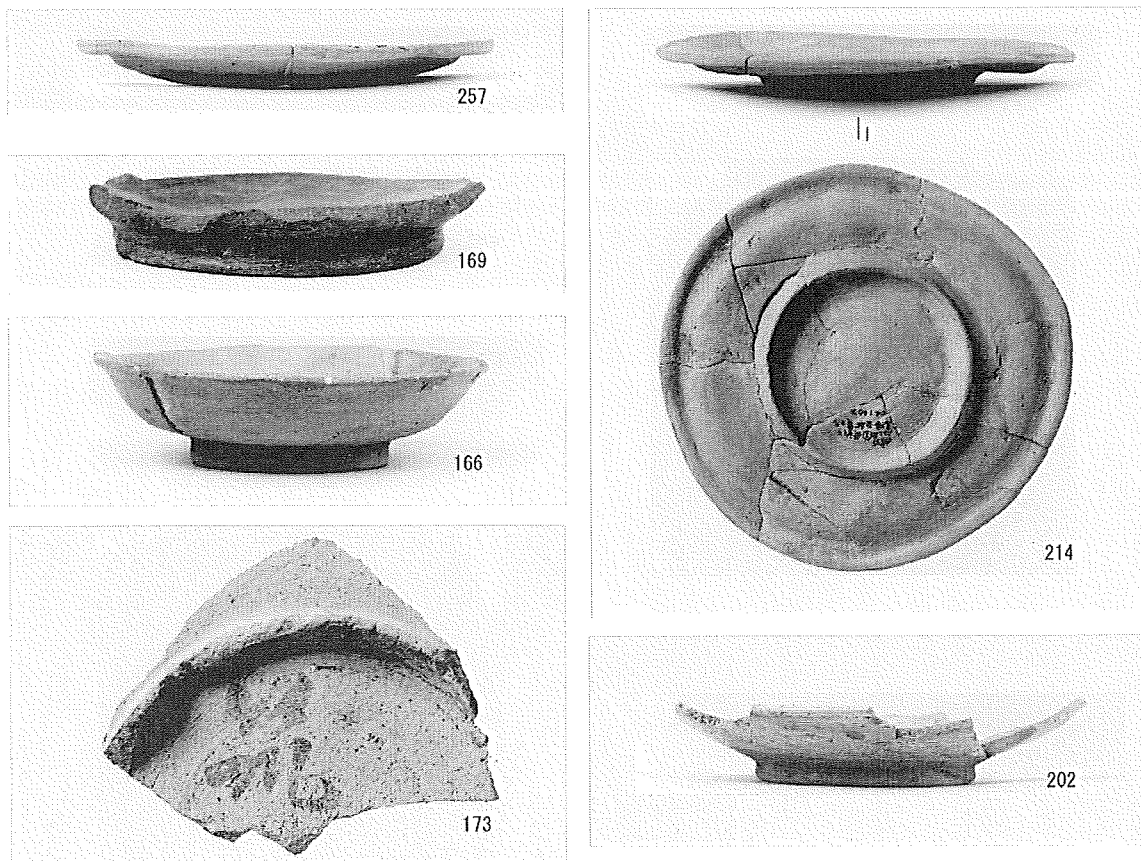


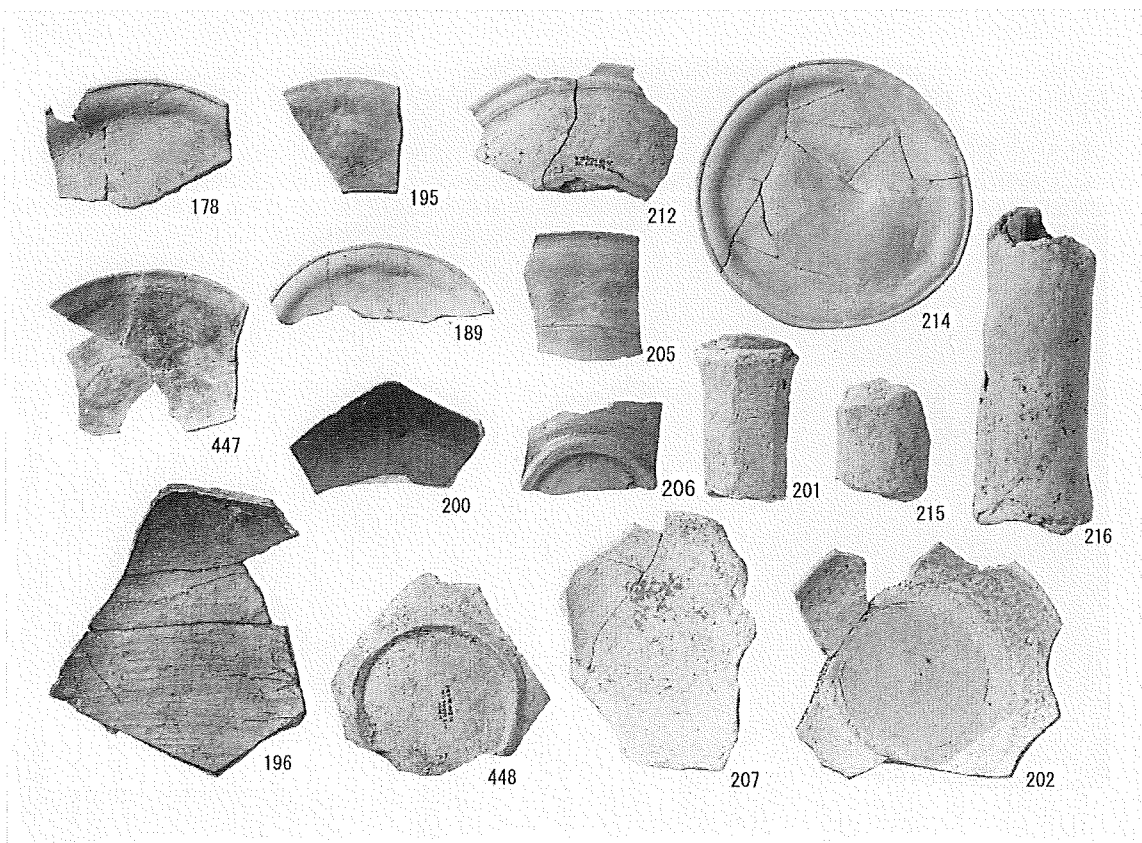
SD302



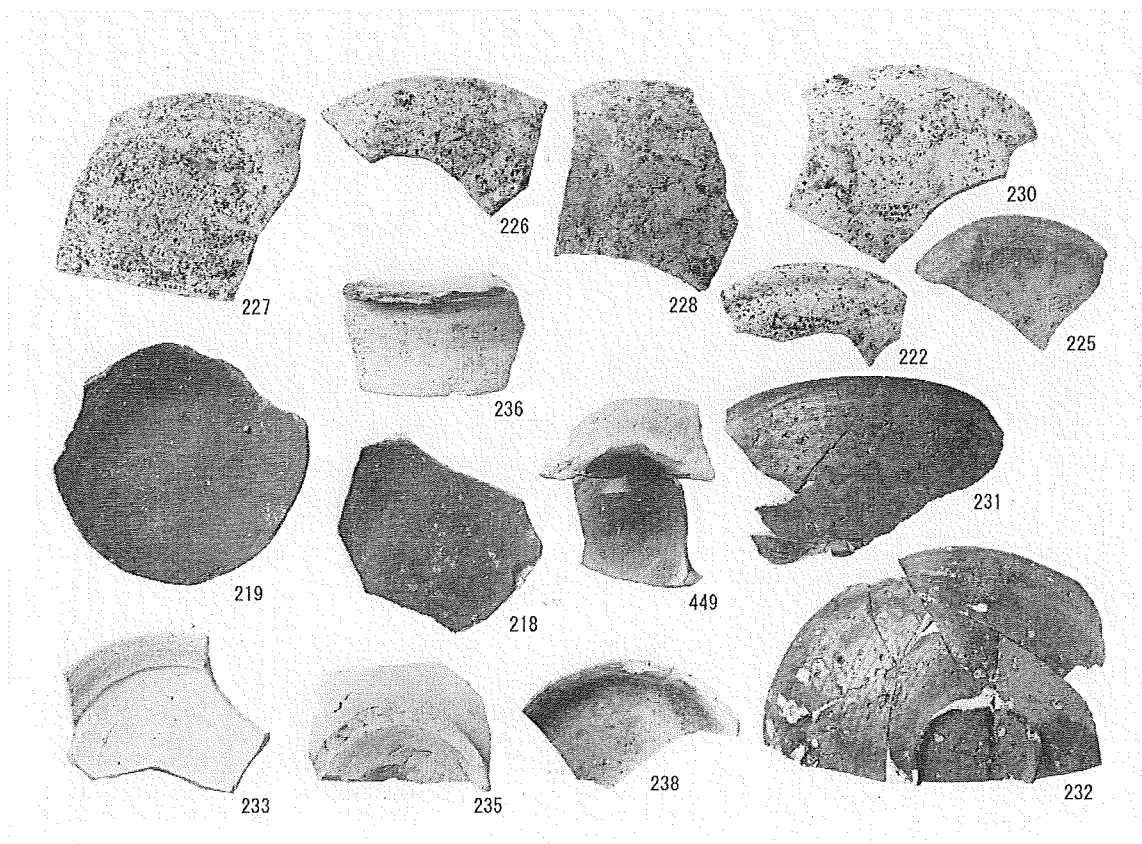
SD302



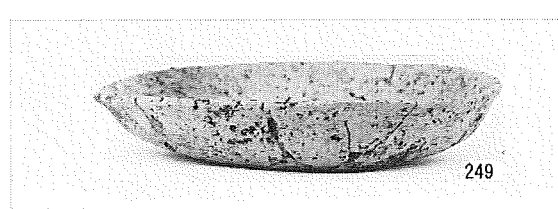
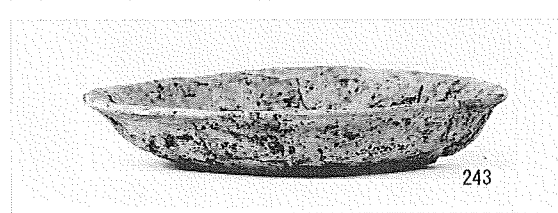
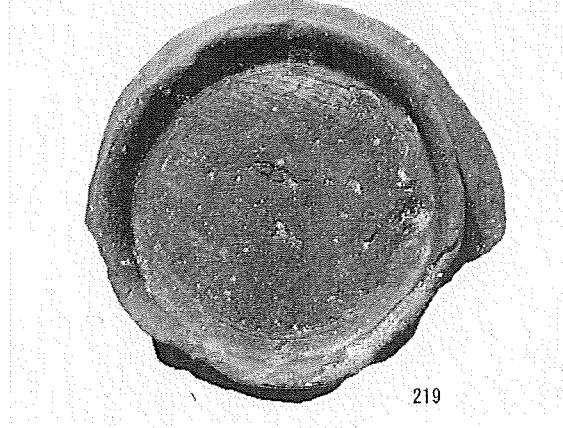
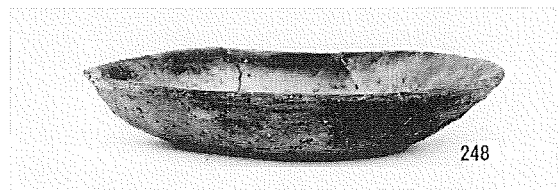
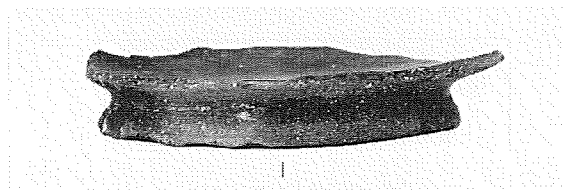
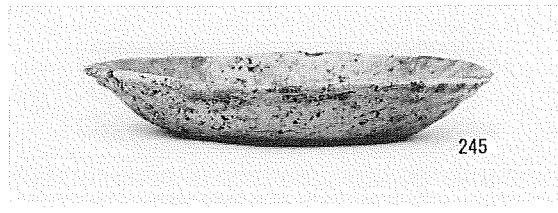
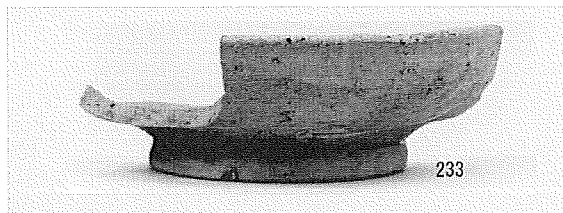




SG479

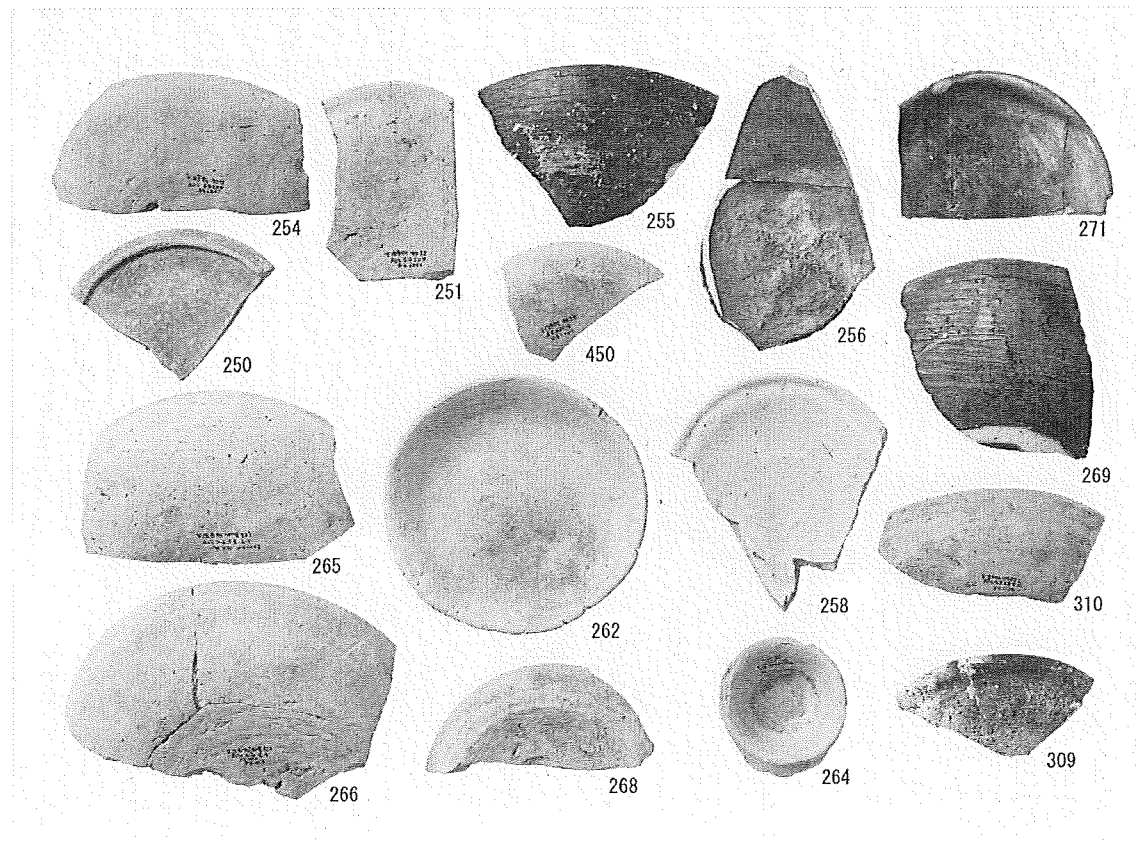


SG494



SG494

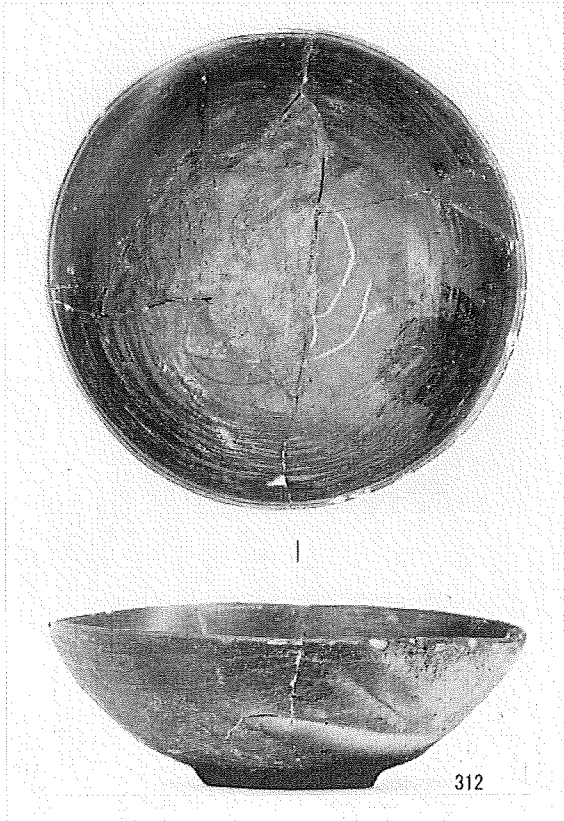
SX607



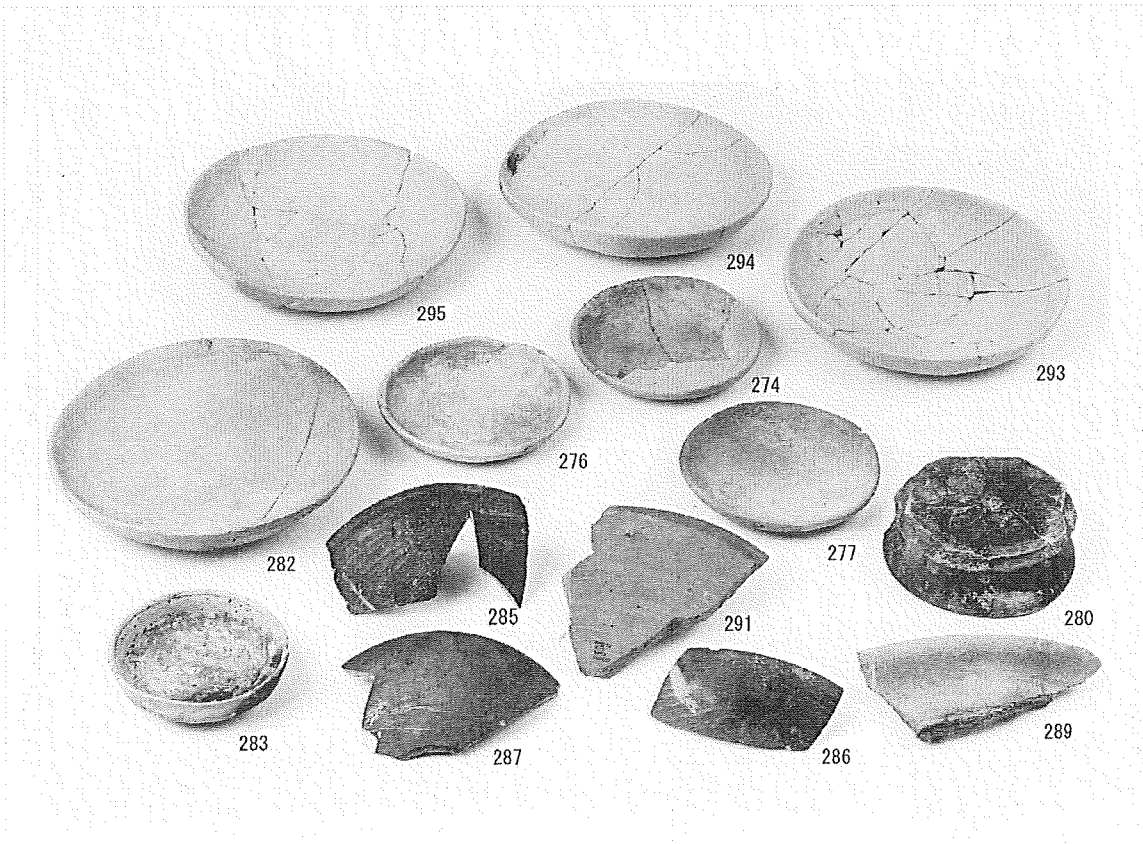
SD304 • SG410 • SE589



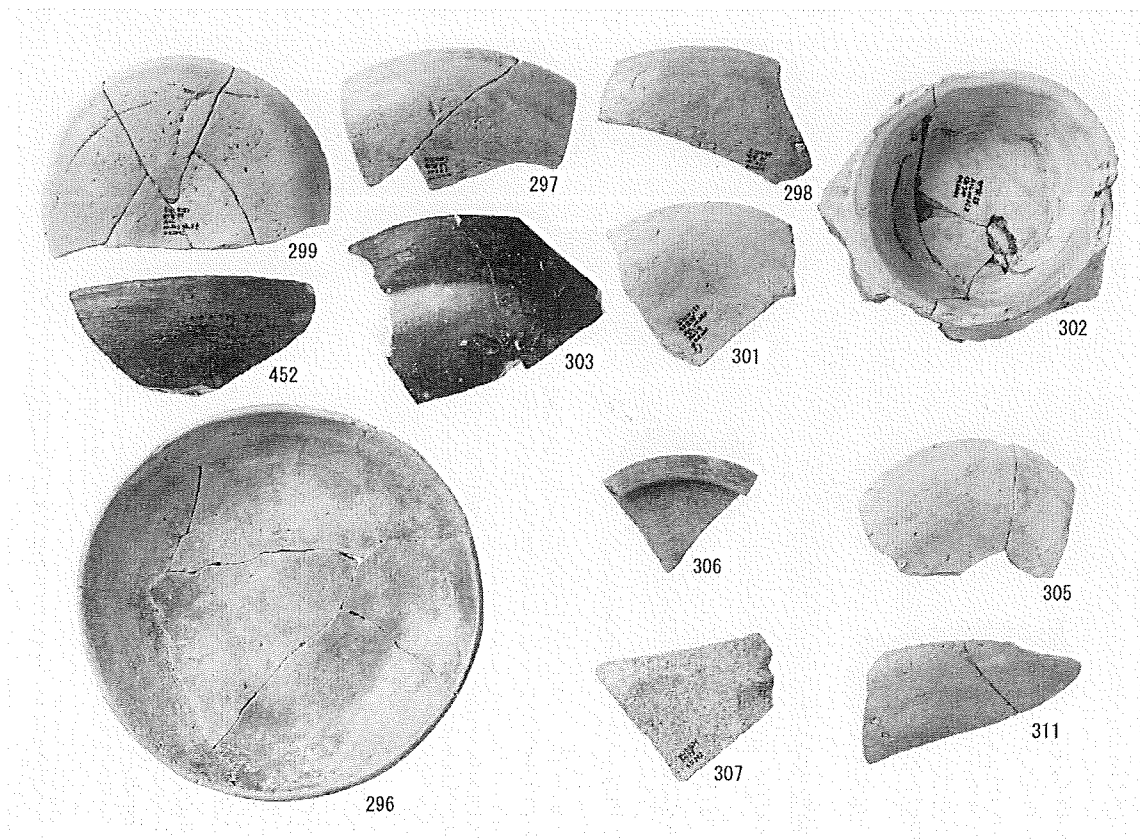
SD262



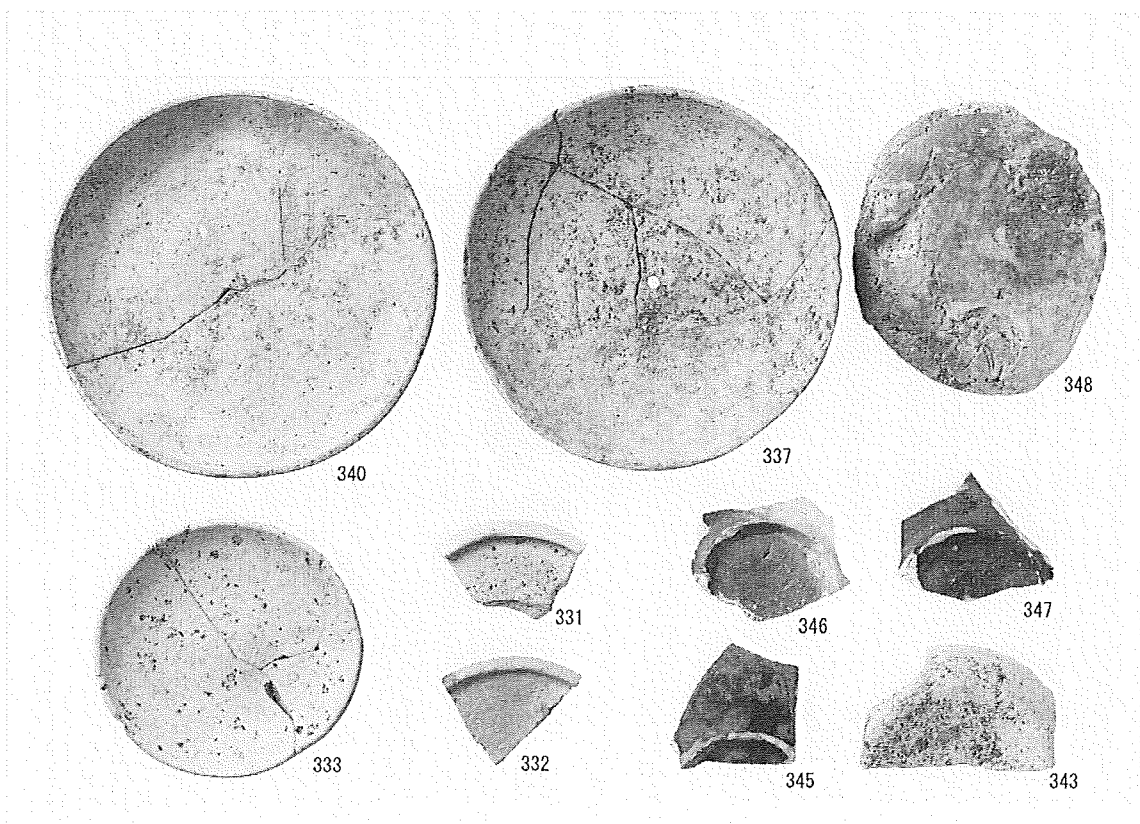
SP49



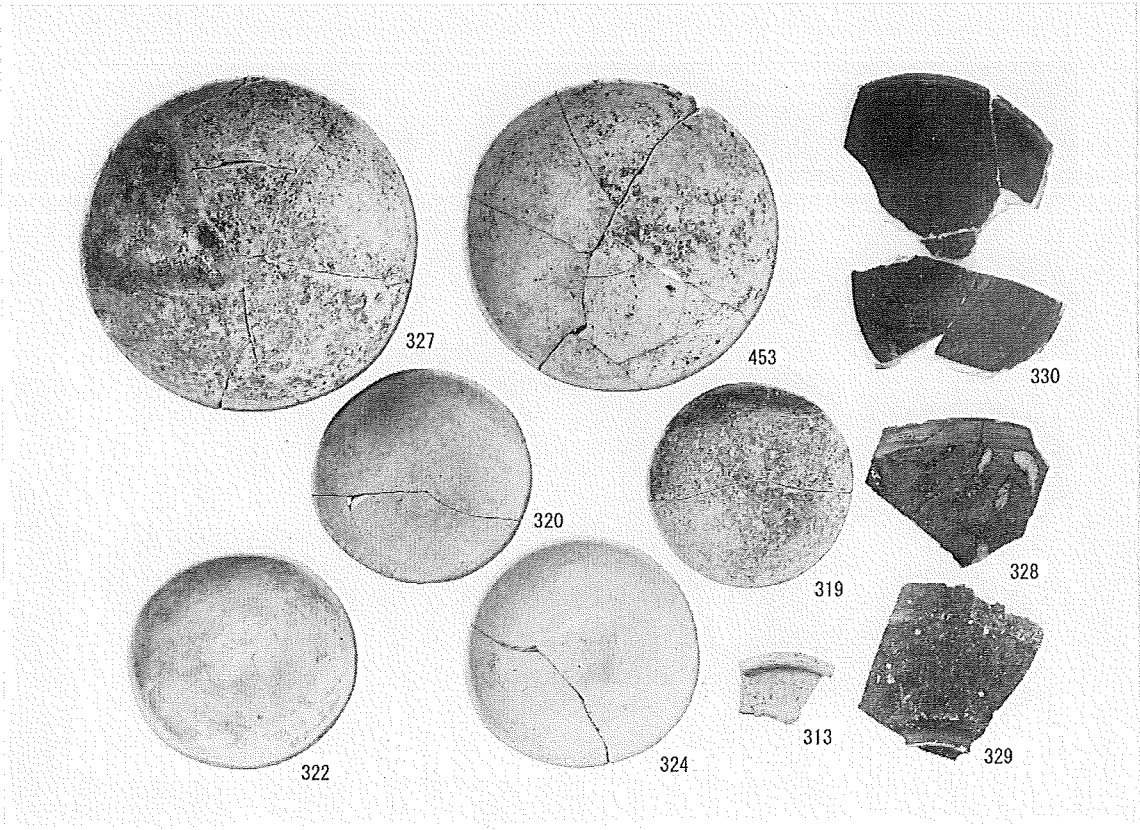
SP79・SE01



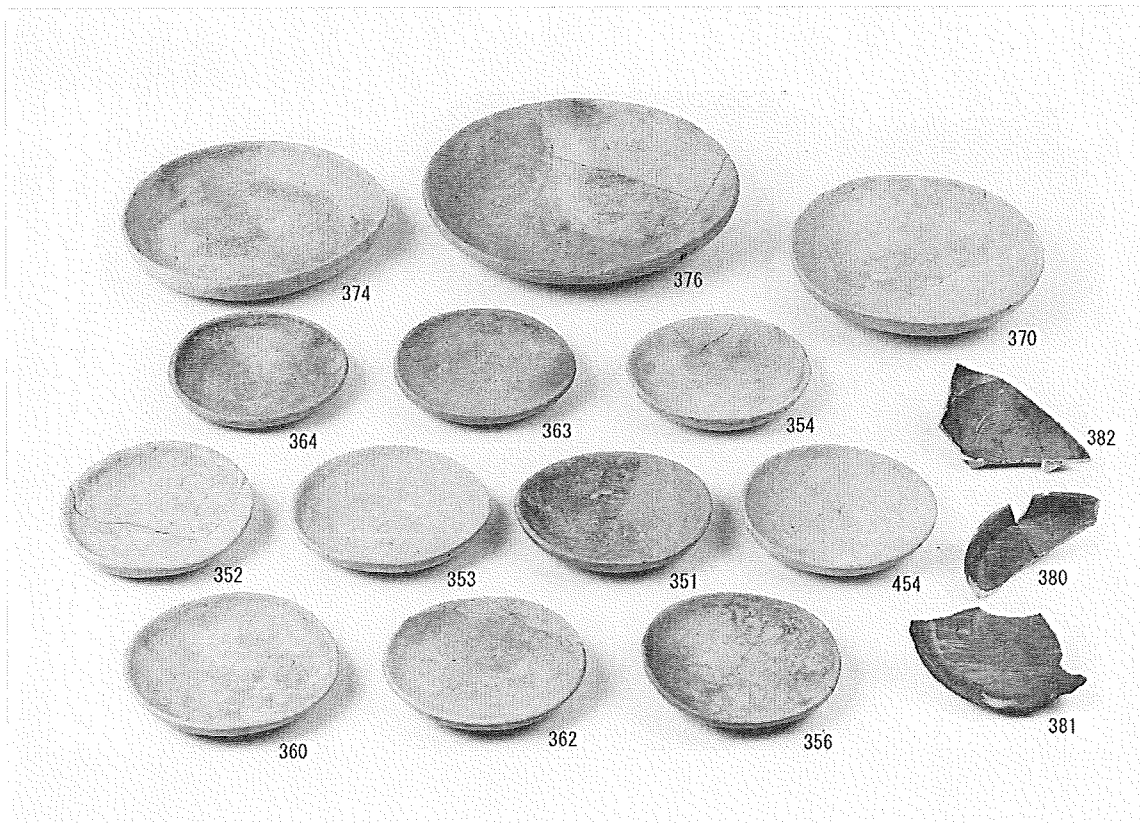
SD261・SD262・SD292・SP49



SK375



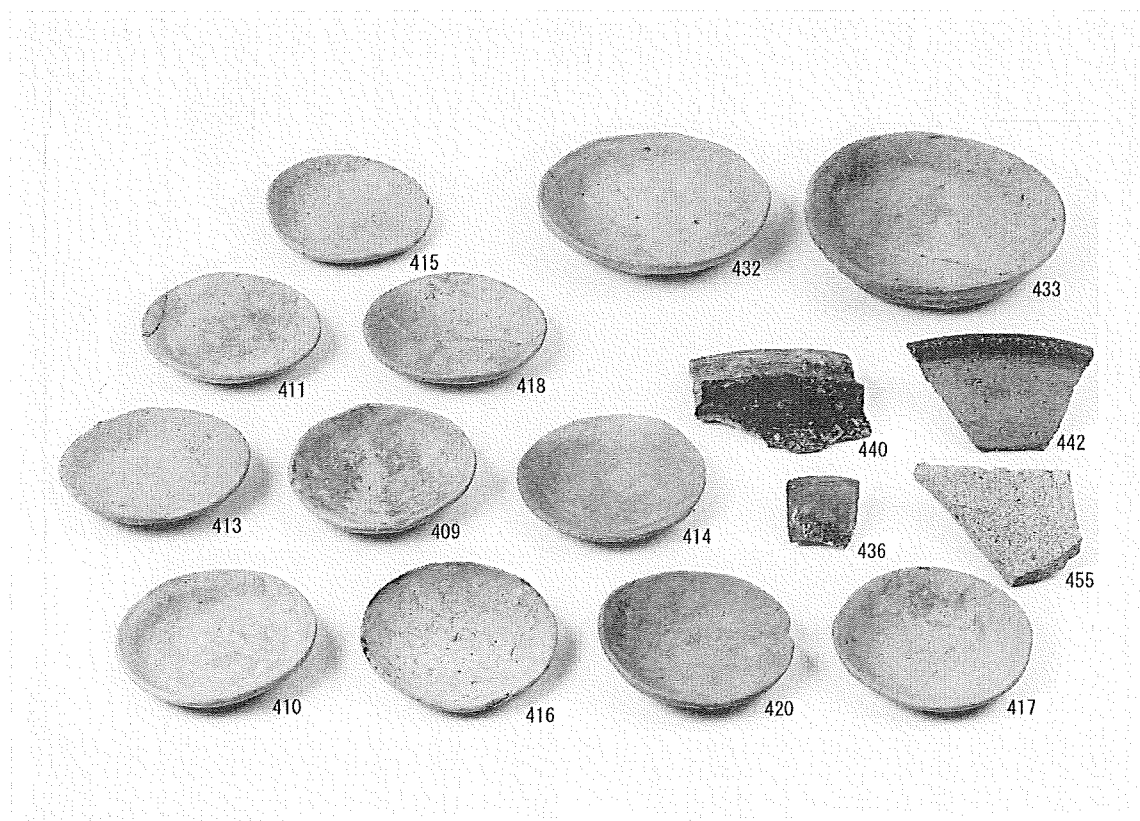
SK395



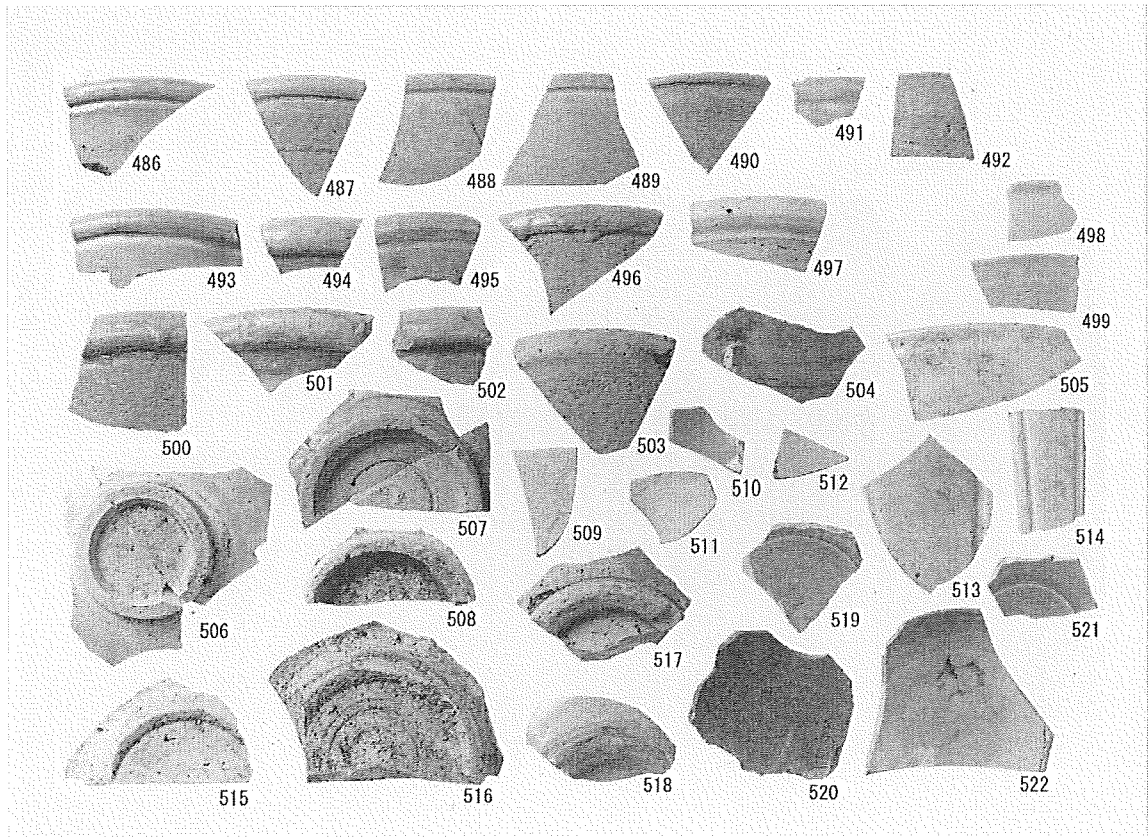
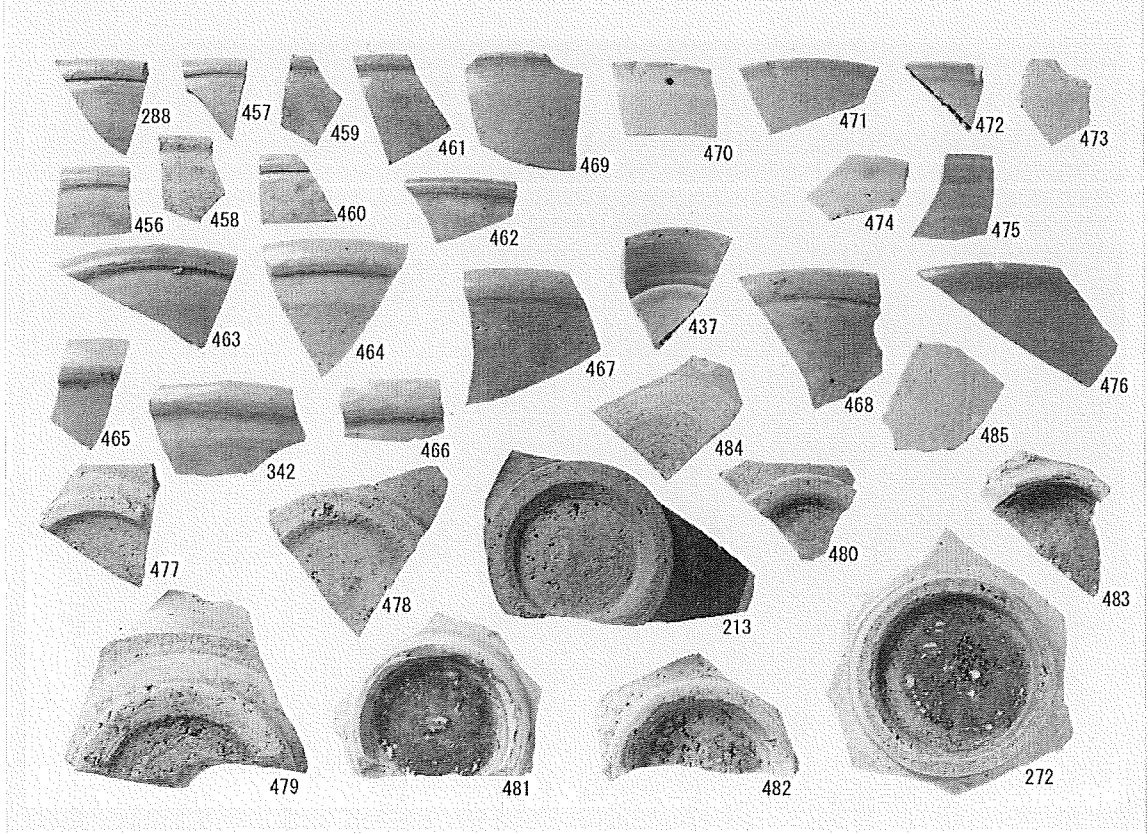
SK396

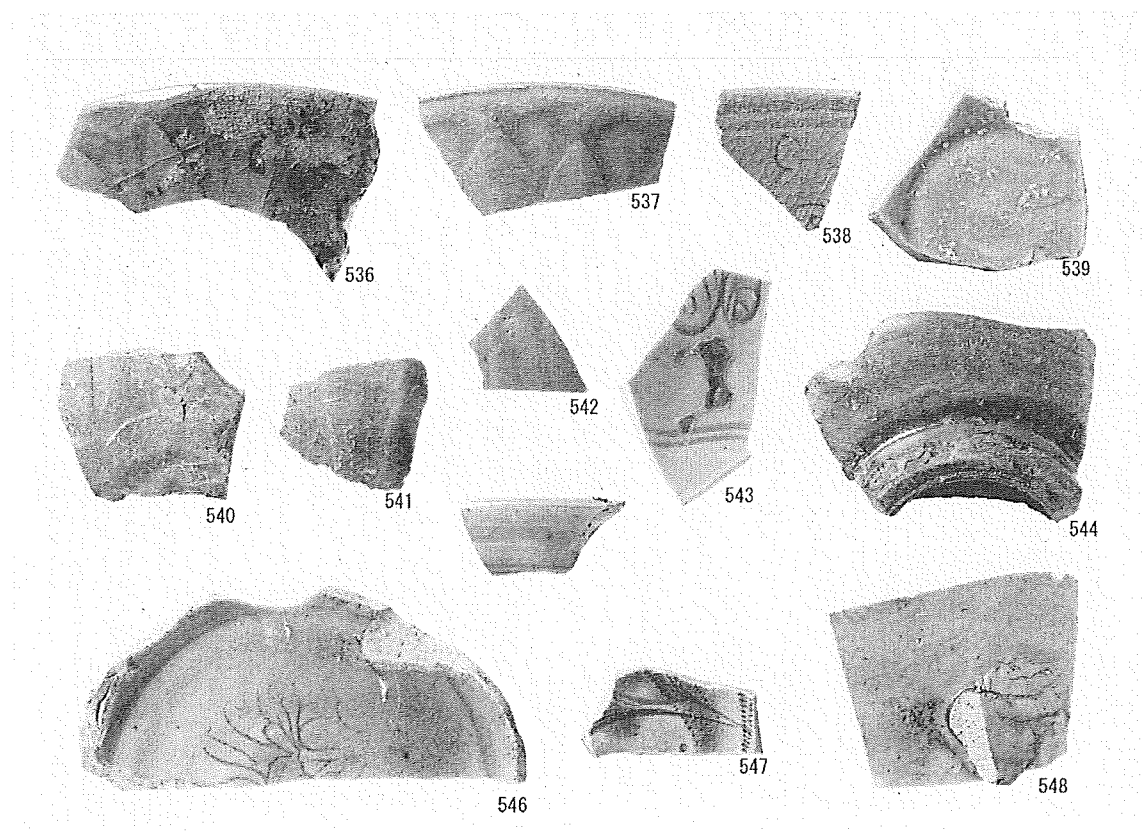
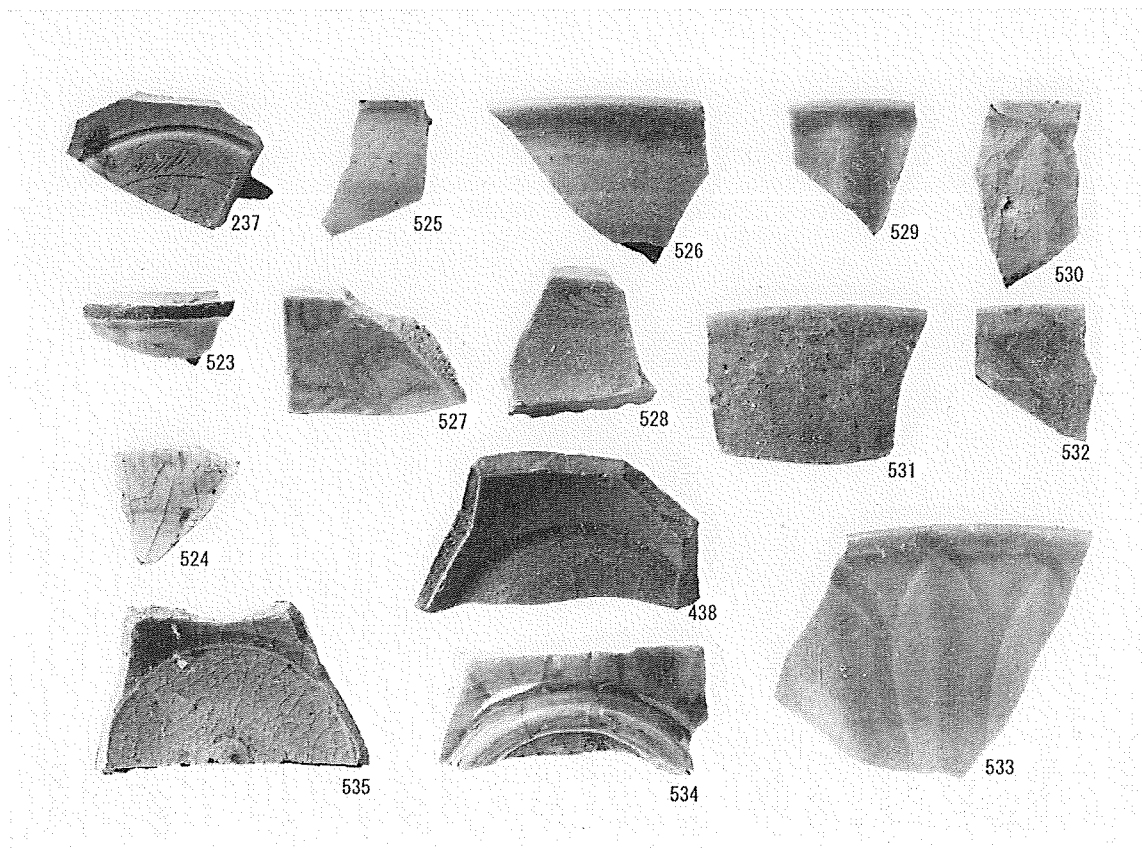


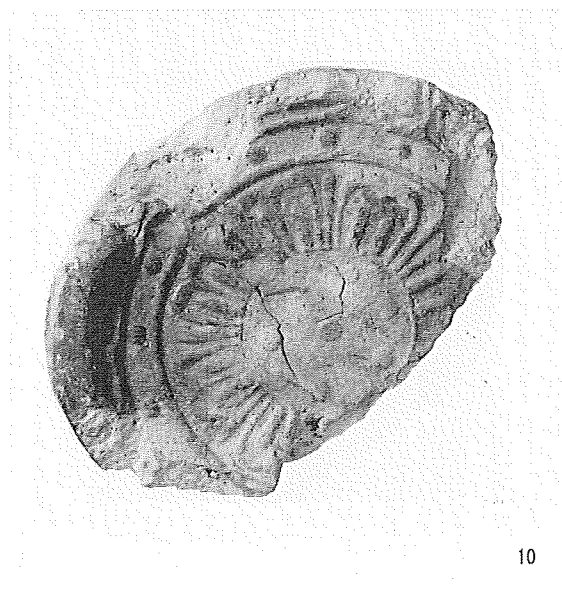
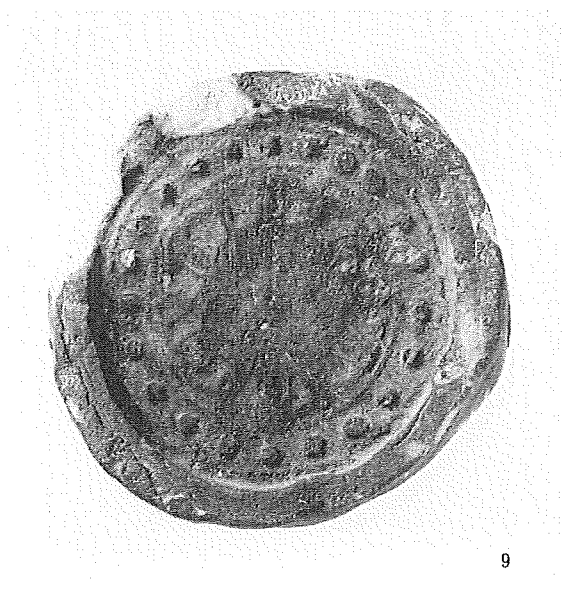
SD493

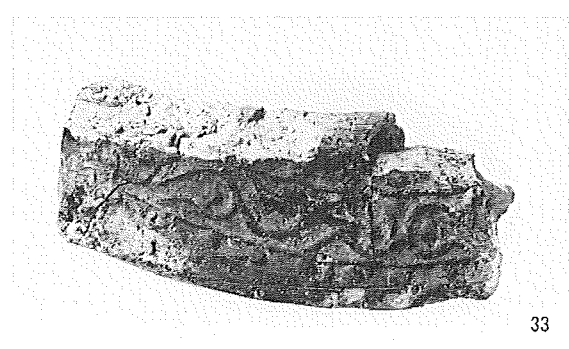


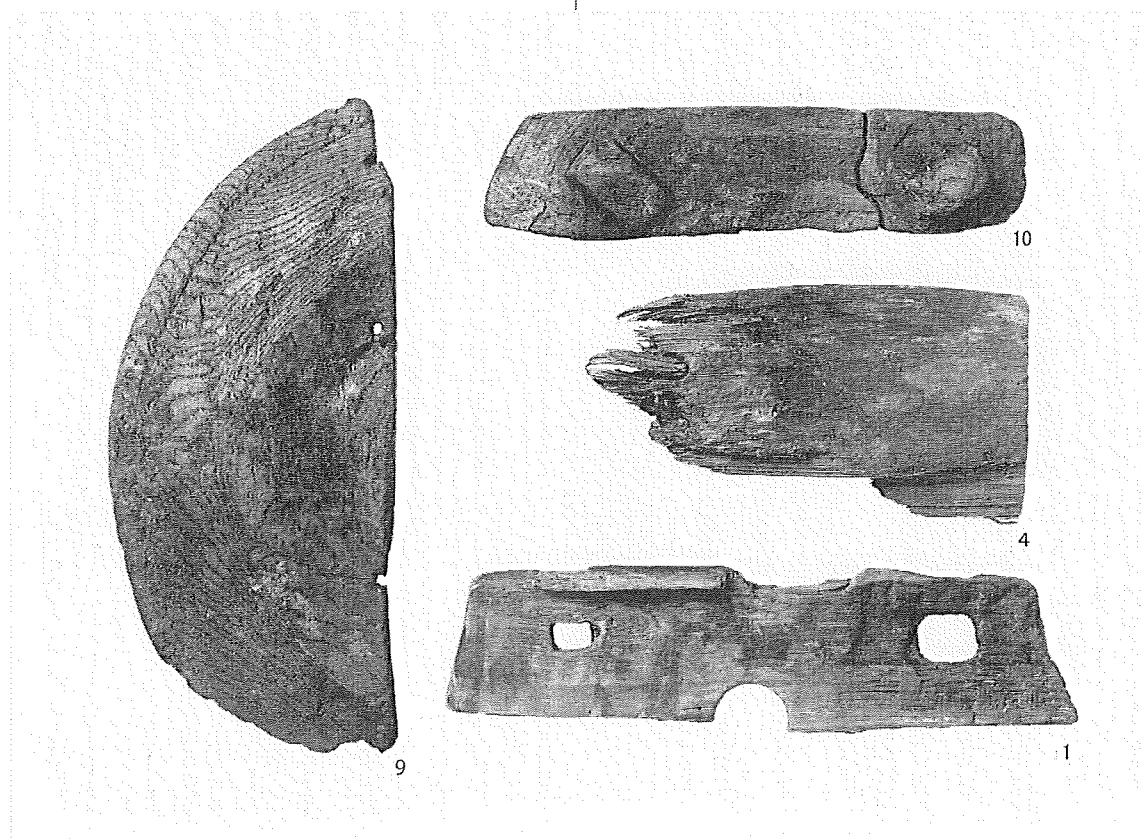
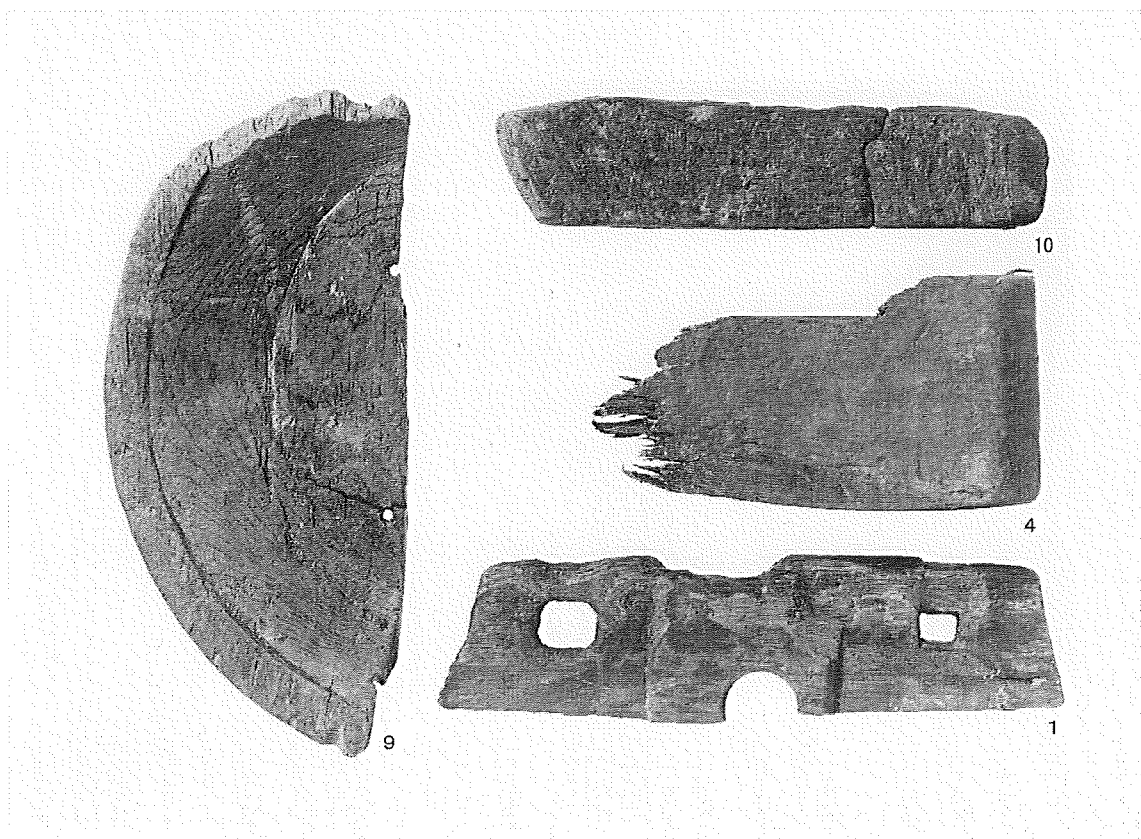
SE476

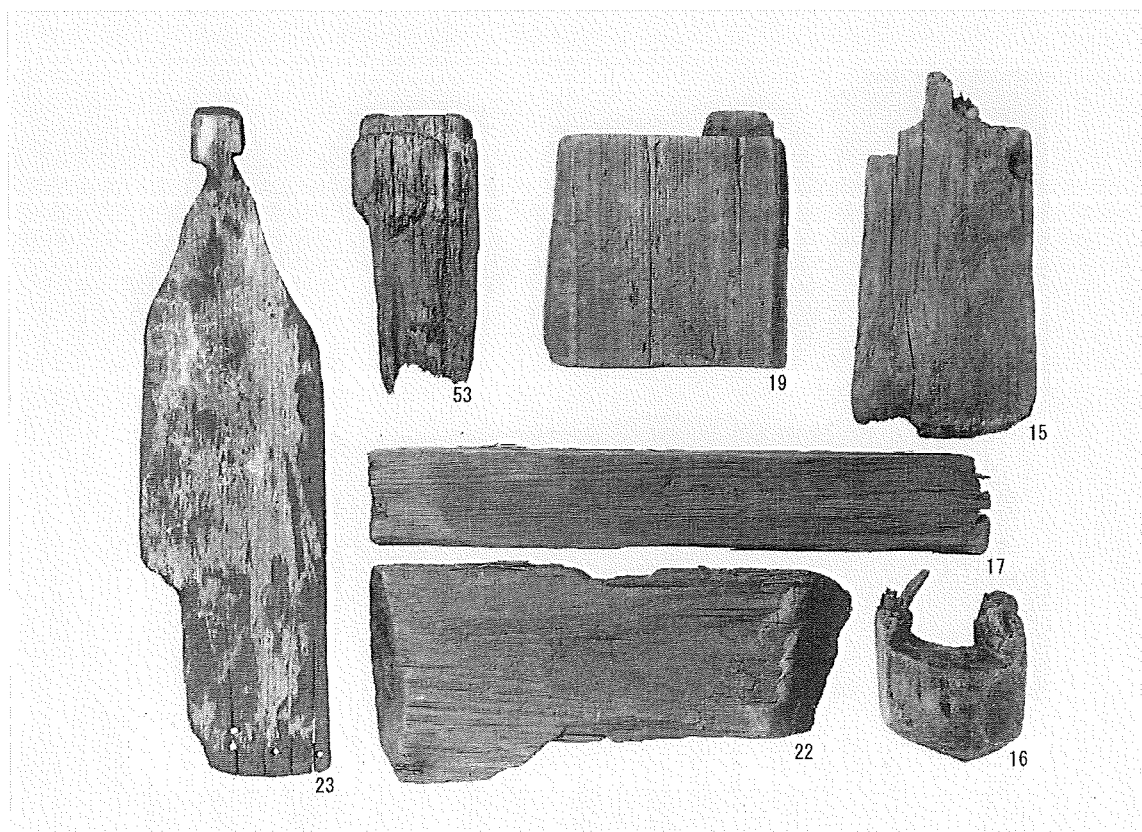




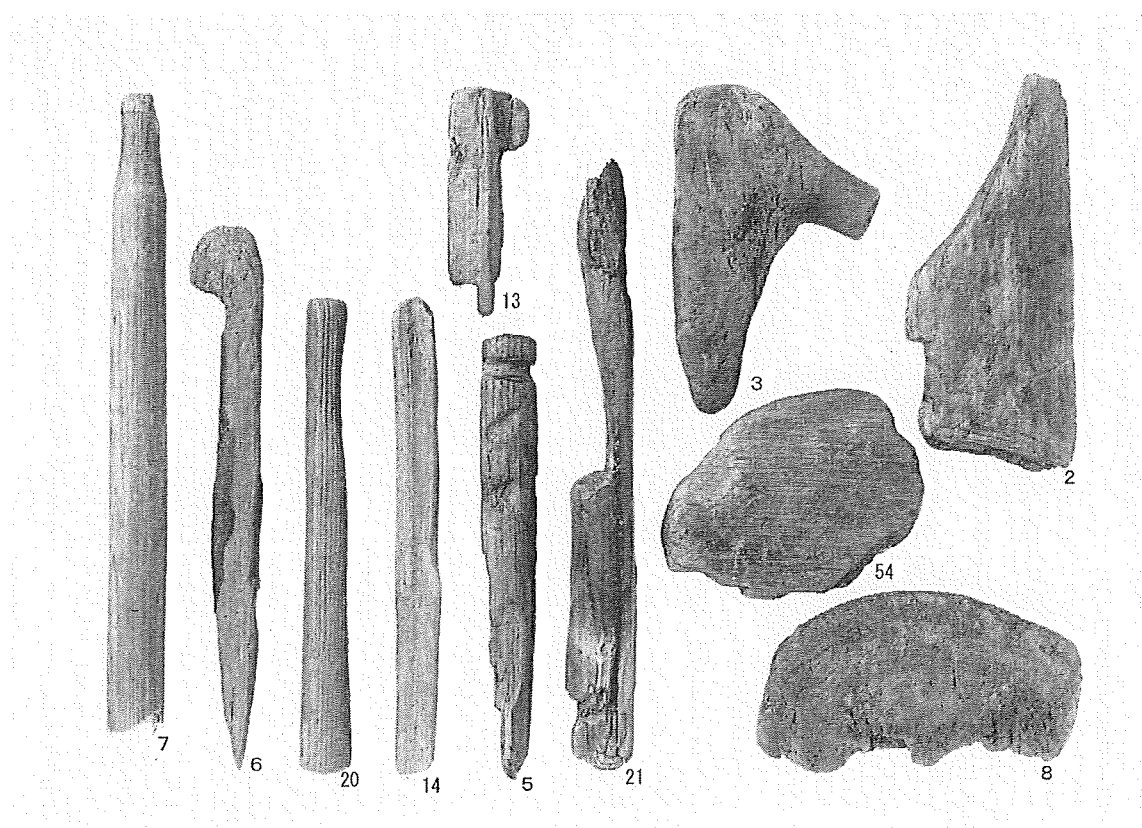




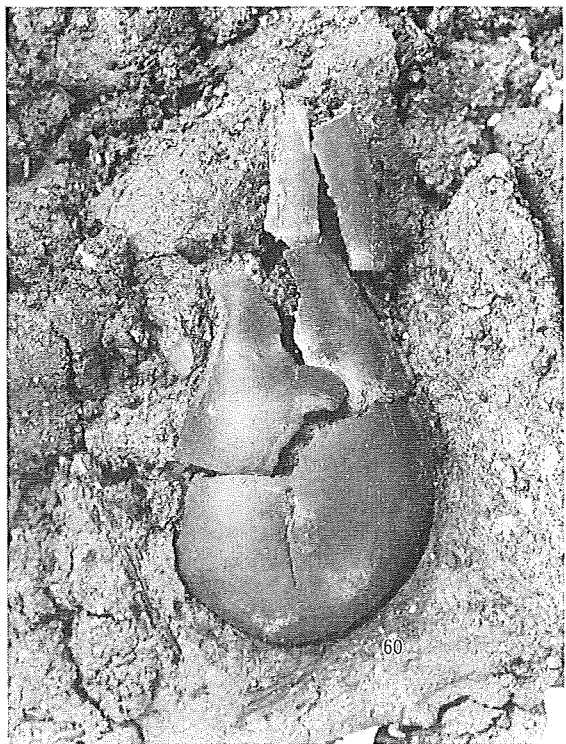
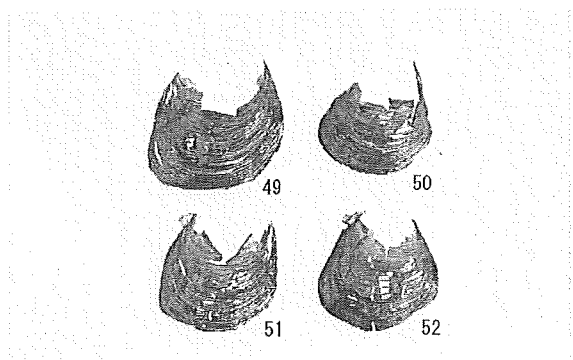
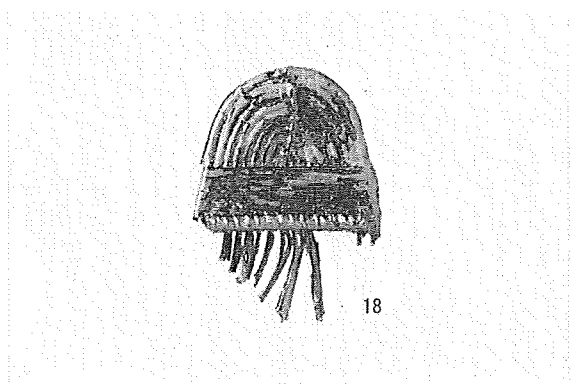


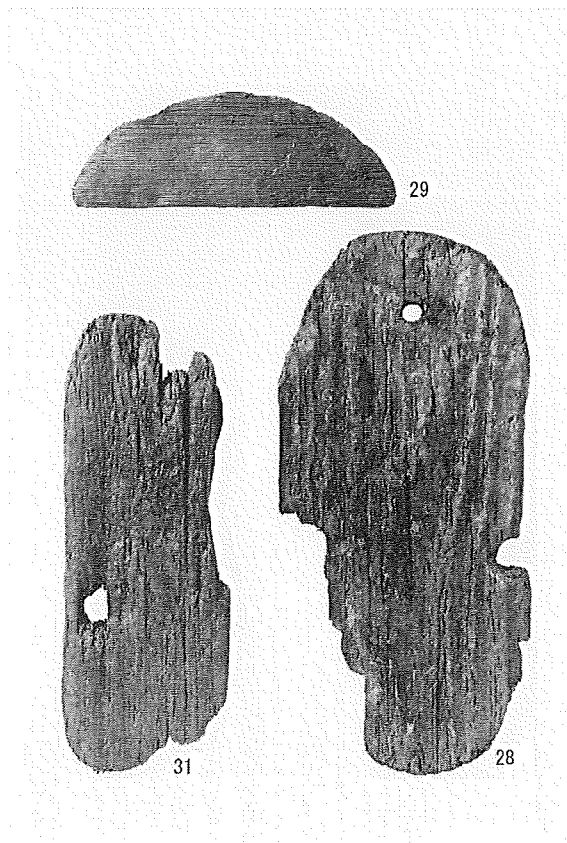


SD302

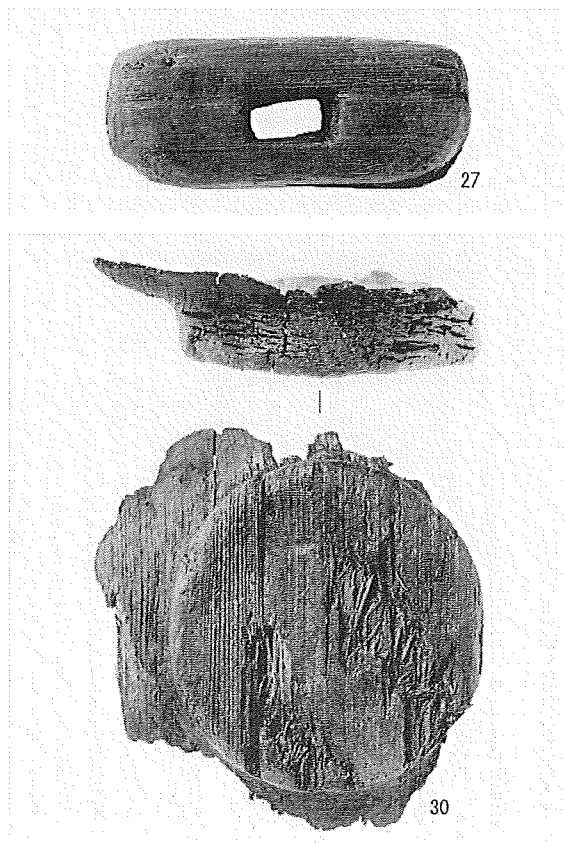


SD302





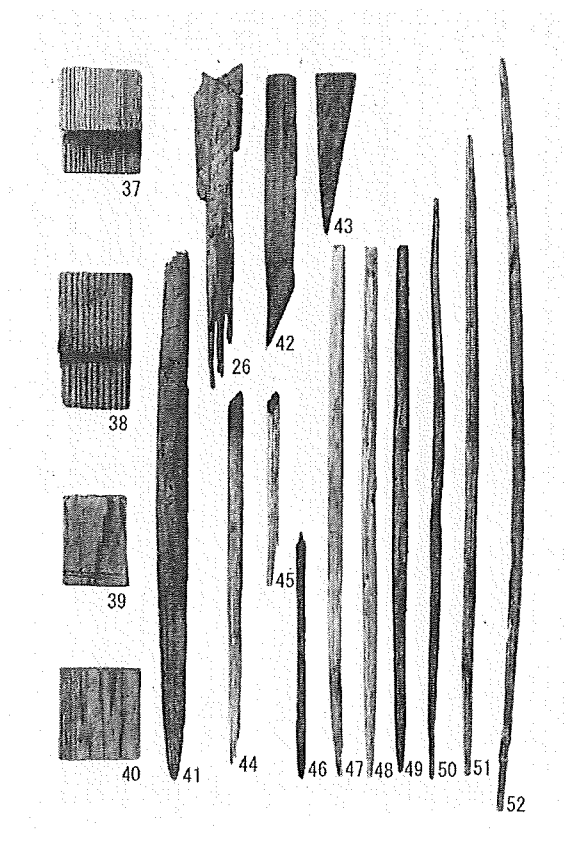
SE01 (28)・SG479 (29・31)



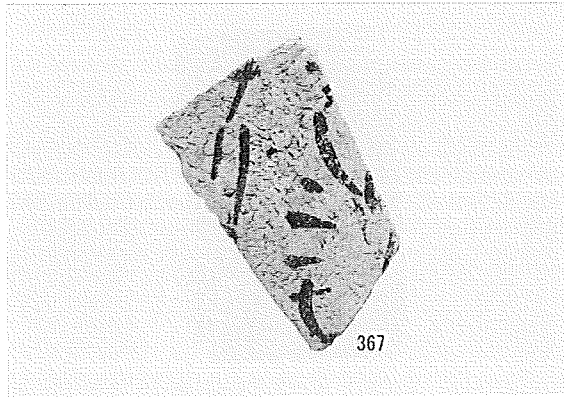
SG479



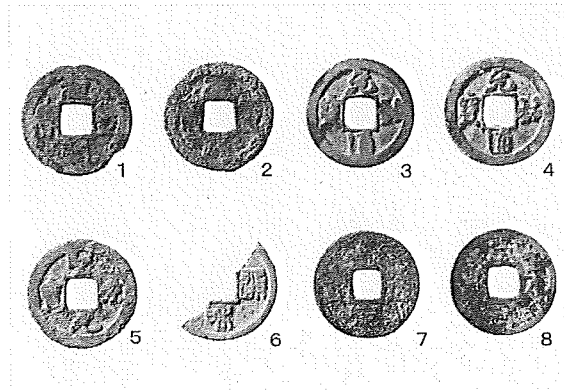
SE01



SK396 ほか



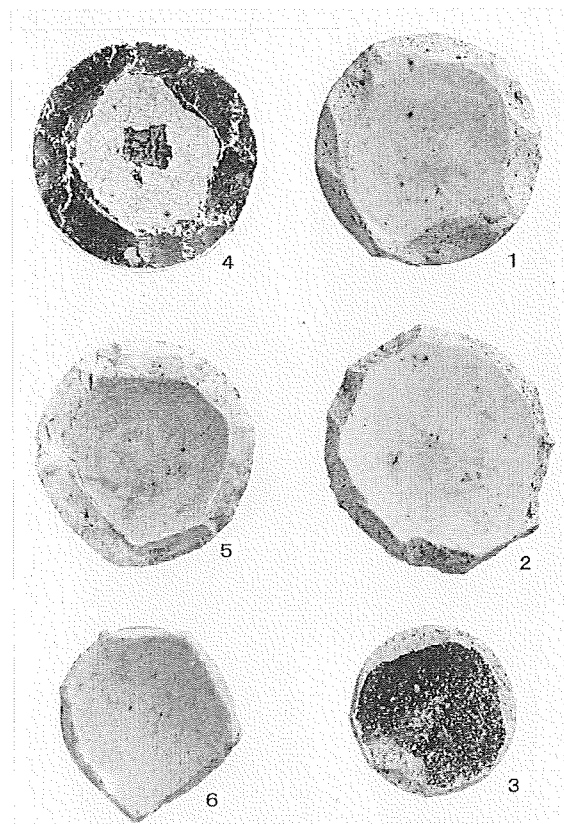
墨書土器 (SK396)



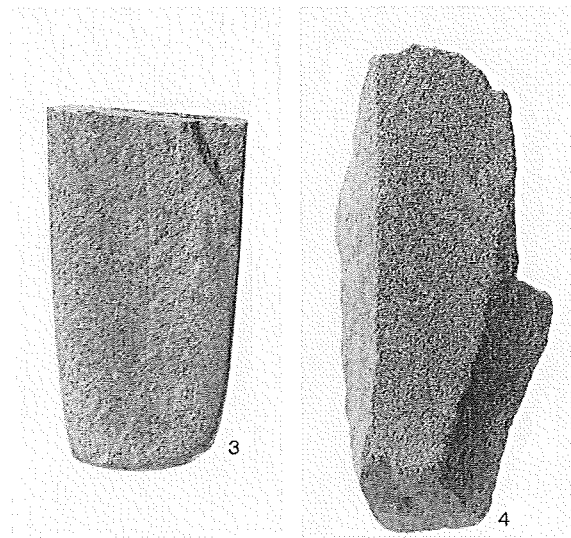
錢貨



石製品 (墨書石 SP398)

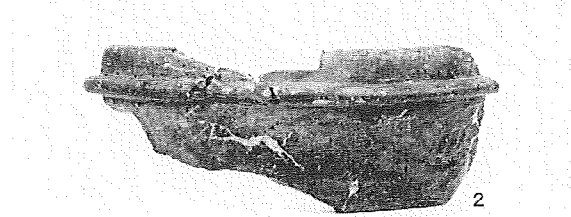


円盤状加工品



石製品 (砥石 SG410)

石製品 (砥石 SE01)



石製品 (石鍋 重機掘削時)