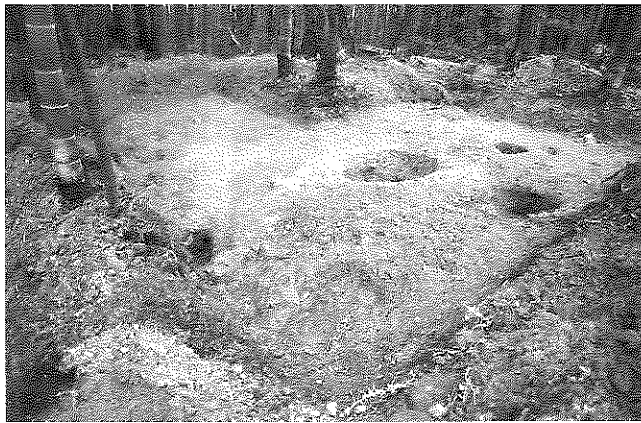


1. 8-14トレンチ全景 (南西から)



2. 8-16トレンチ全景 (北東から)



3. 8-17トレンチ全景 (南から)



4. 8-7トレンチ西半部全景 (北東から)



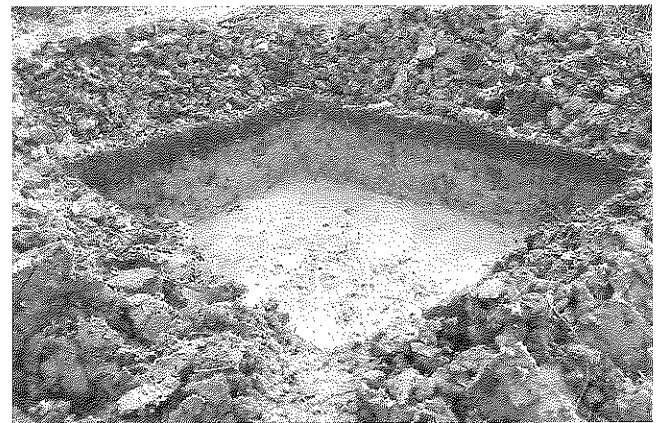
5. 第5調査区全景 (北から)



6. 8-20トレンチ全景 (南西から)



7. 8-26トレンチ全景 (北西から)



8. 8-27トレンチ全景 (北東から)

1. 第3調査区全景
(南から)



2. 9-7トレンチ上面
検出状況(西から)



3. 同上トレンチ完掘
状況(南西から)





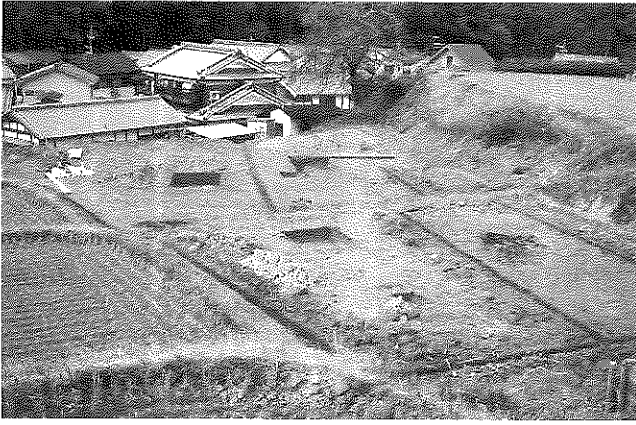
1. 9-9トレンチ全景
(北西から)



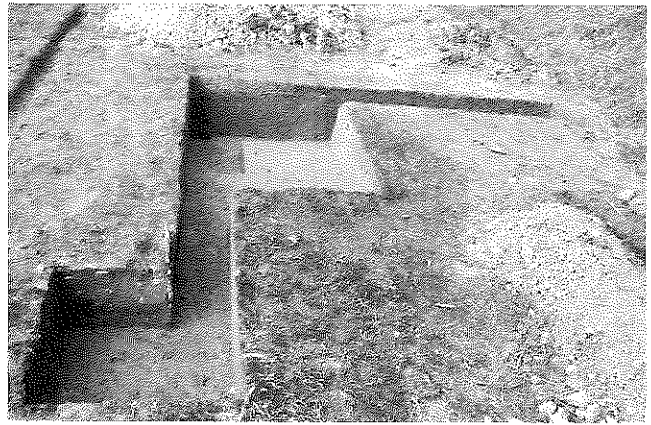
2. 同上トレンチSD9801
の埋土(整地土)の状況
(北西から)



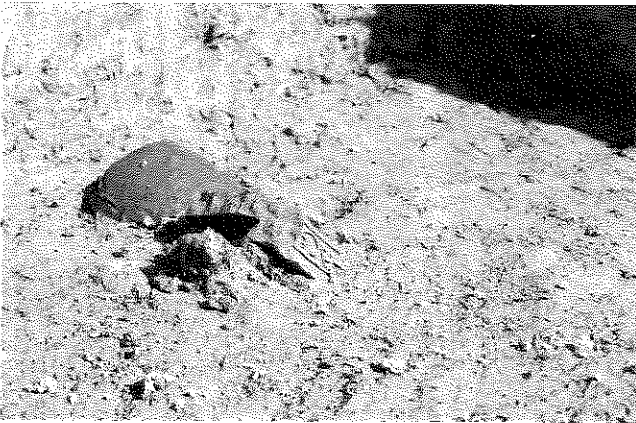
3. 9-8トレンチ全景
(西から)



1. 第1調査区全景(東から)



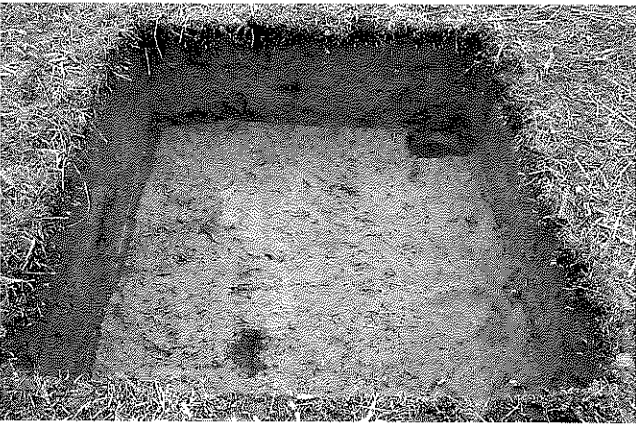
2. 9-1トレンチ全景(南東から)



3. 軒平瓦出土状況(9-1トレンチ・南西から)



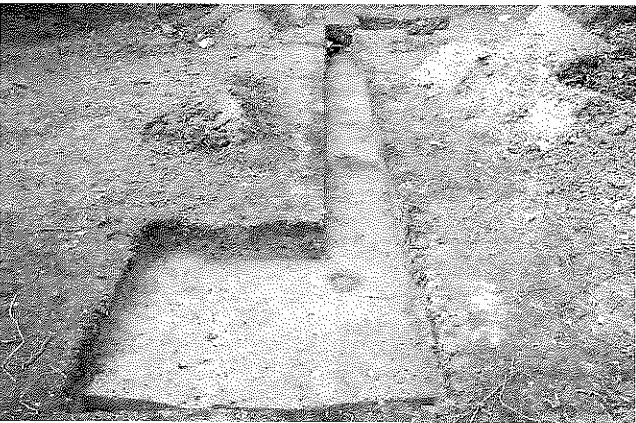
4. 9-2トレンチ全景(北西から)



5. 9-3トレンチ全景(南東から)



6. 第2調査区全景(北東から)



7. 9-4トレンチ全景(南東から)



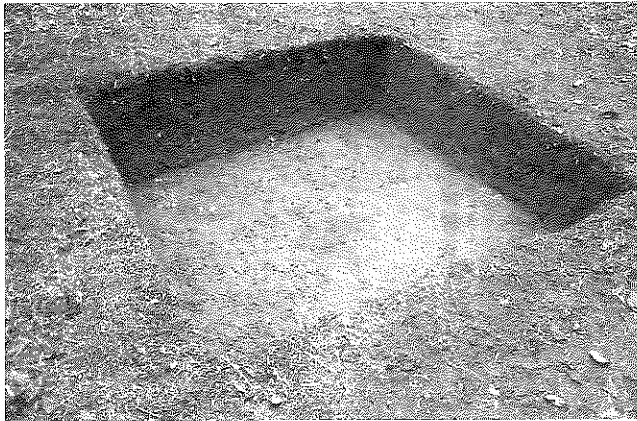
8. 9-6トレンチ全景(南東から)



1. 第4調査区西半部全景(南から)



2. 9-11トレンチ全景(北西から)



3. 9-12トレンチ全景(北西から)



4. 第4調査区東半部全景(南から)



5. 9-13トレンチ全景(南西から)



6. 9-15トレンチ全景(南西から)



1. 第4調査区10-4トレンチ全景(東から)



2. 第2調査区全景(南東から)



3. 第3調査区10-10トレンチ全景(南から)



4. 第4調査区10-12トレンチ全景(北西から)



5. 第4調査区10-13トレンチ全景(西から)



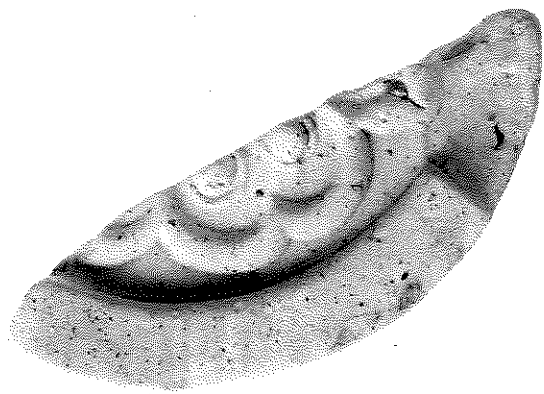
6. 第5調査区10-14トレンチ全景(北東から)



1



2



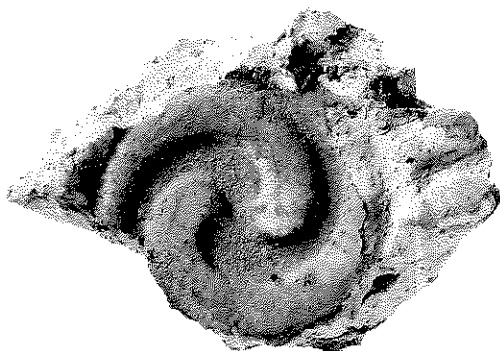
3



4



5



6



8



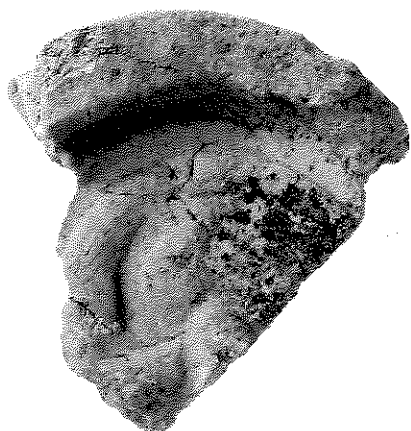
9



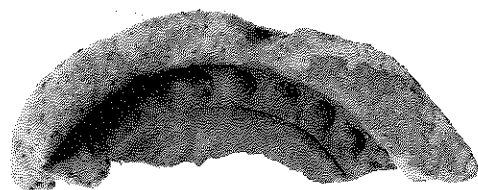
10



11



13



14

軒丸瓦



15



16



17



18



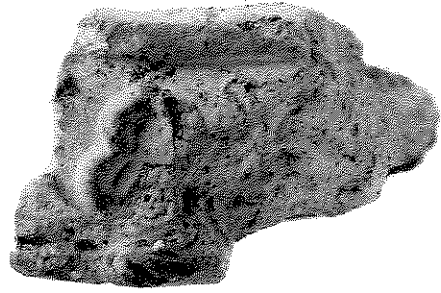
20



19



23



26



24



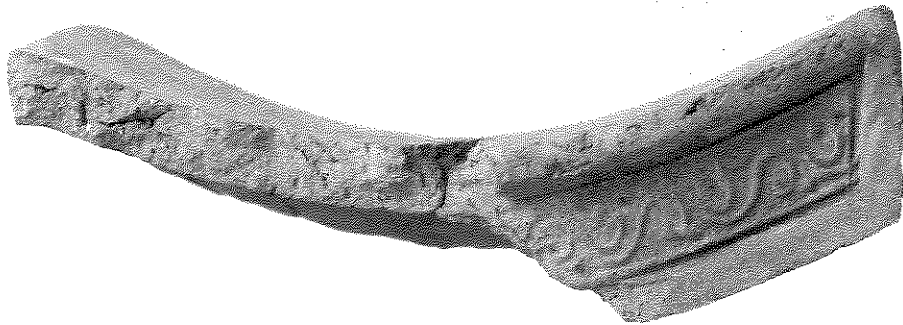
25



29



27



30

軒平瓦



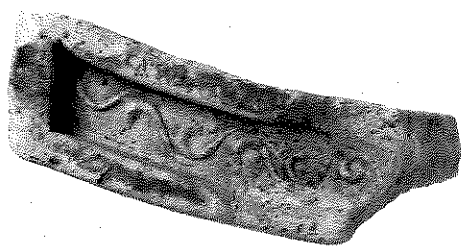
31



33



32



34



35



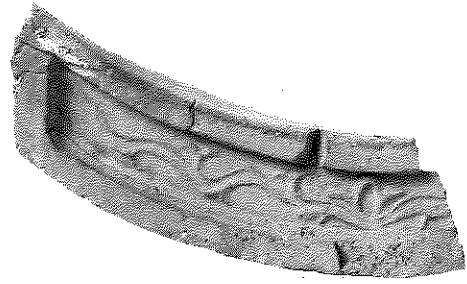
37



36



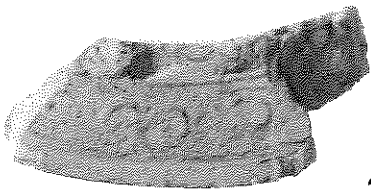
38



39



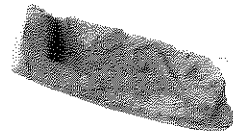
45



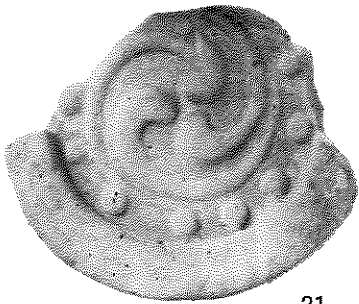
40



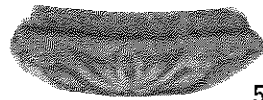
41



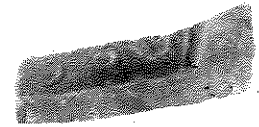
42



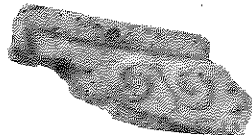
21



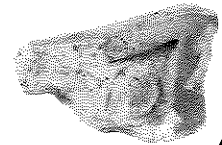
51



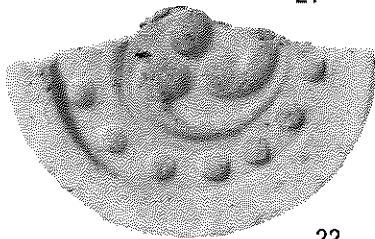
43



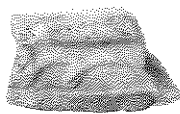
49



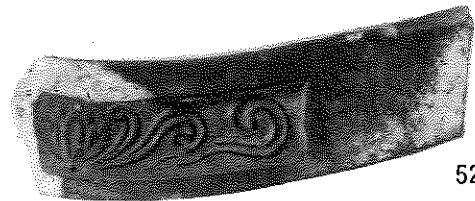
48



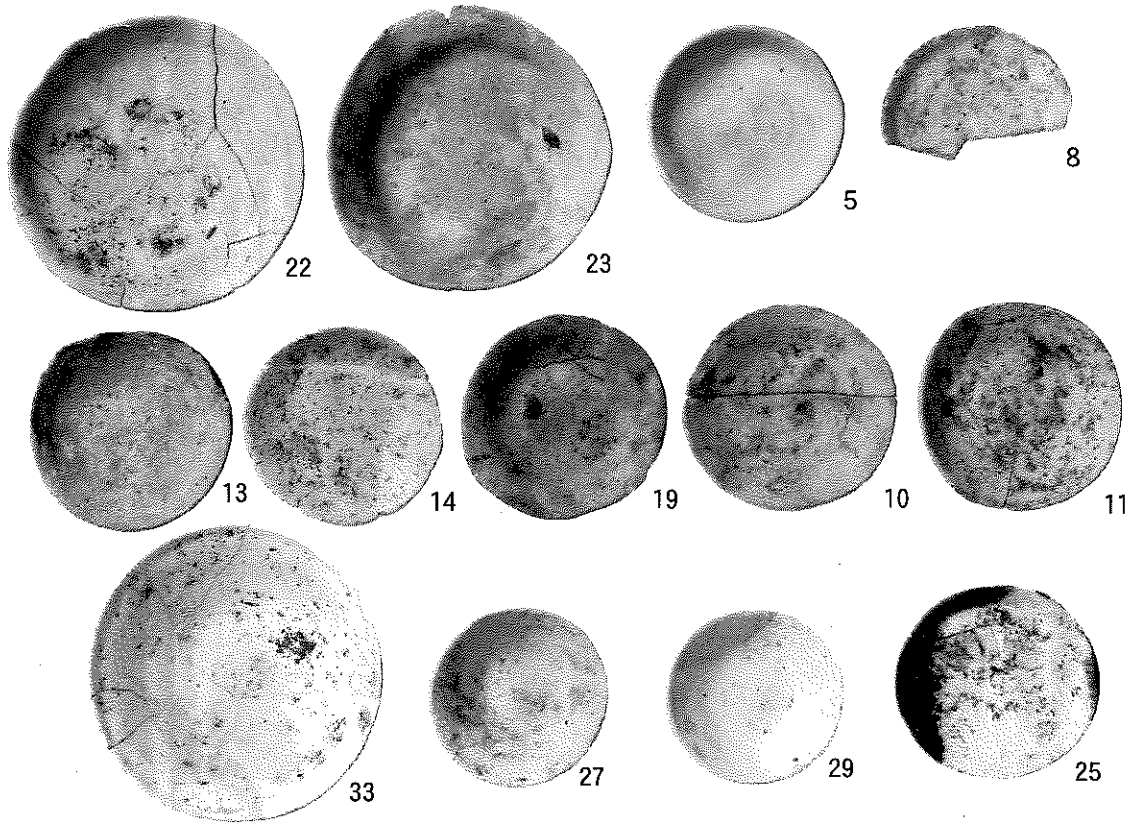
22



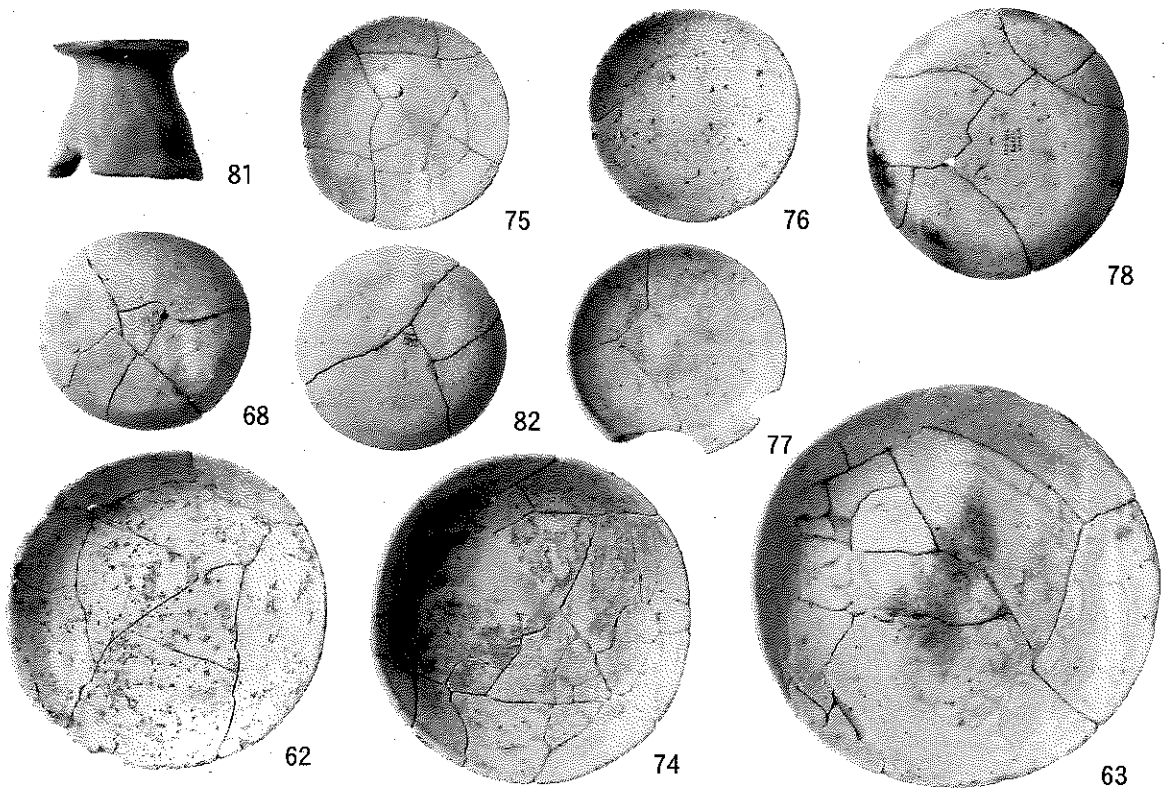
50



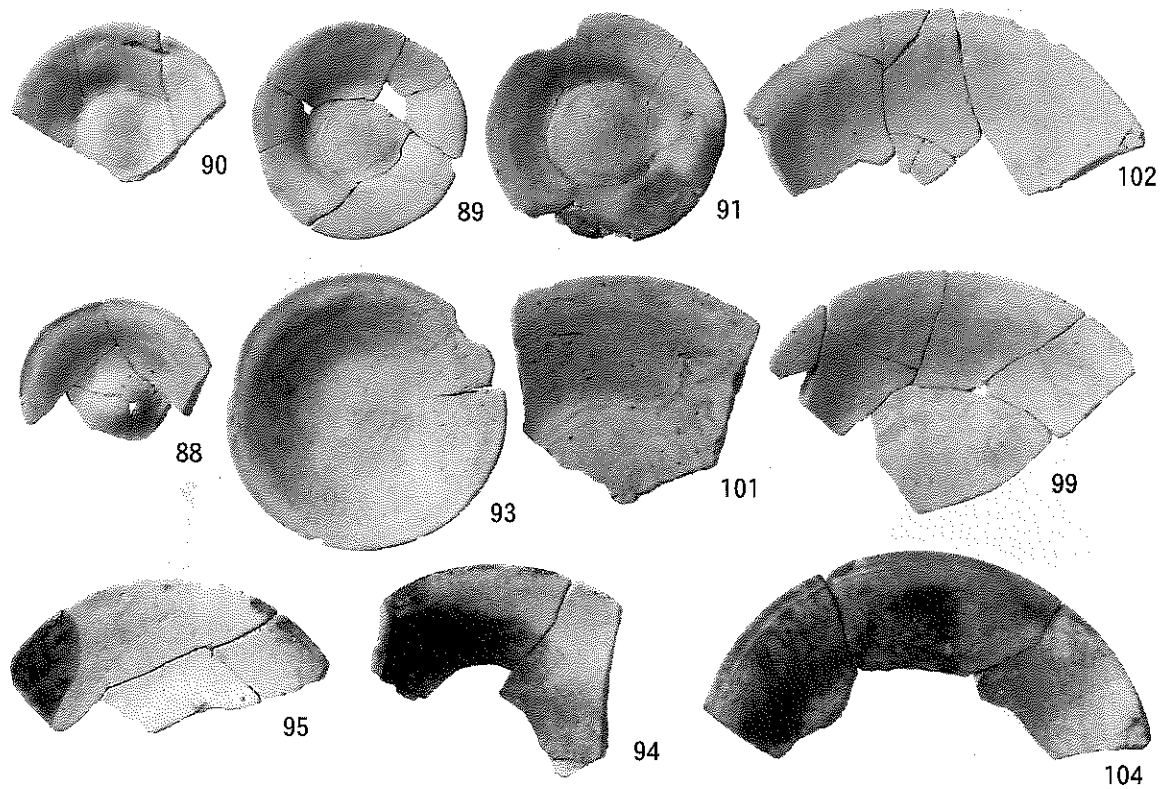
52



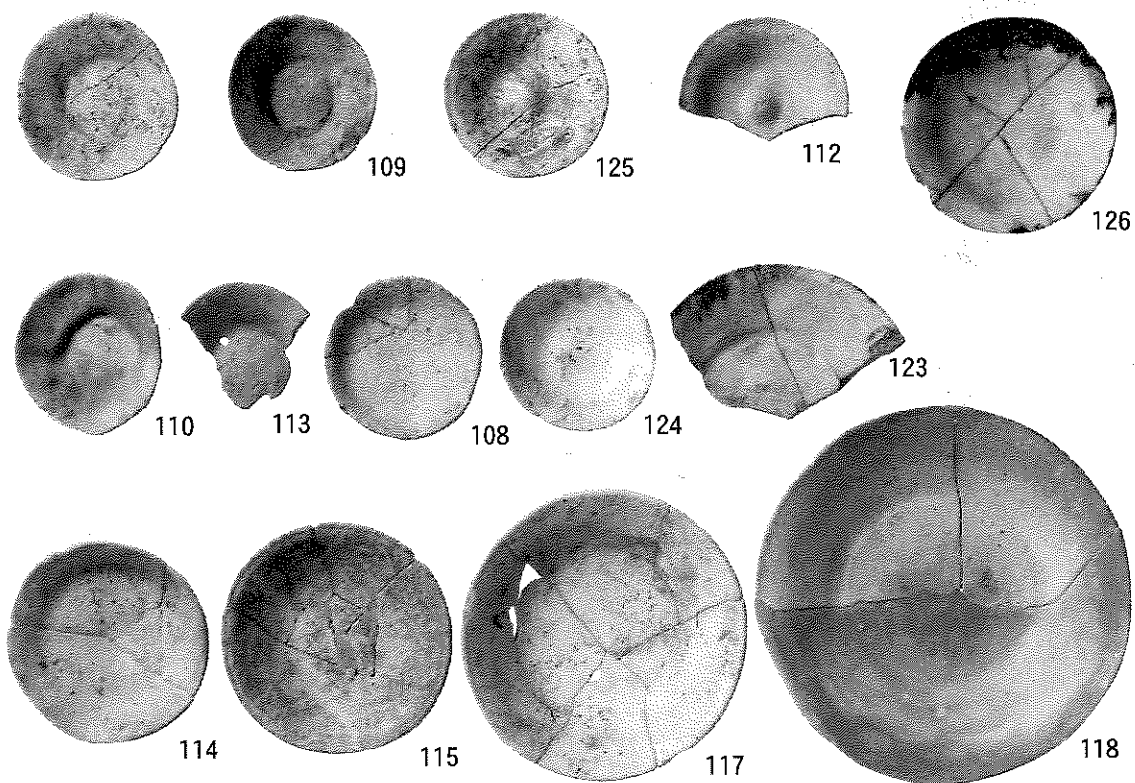
土師器 1



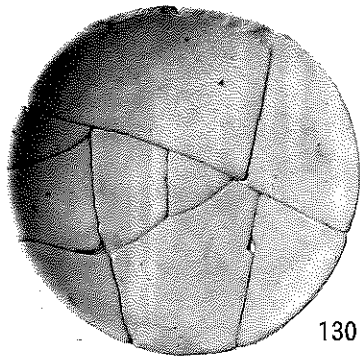
土師器 2



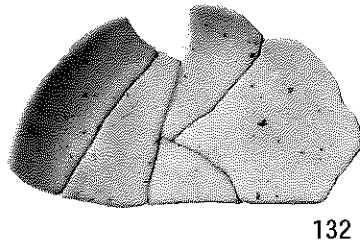
土師器 3



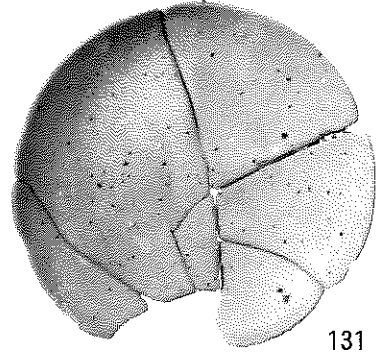
土師器 4



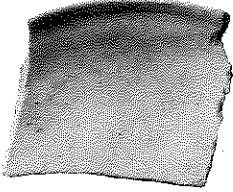
130



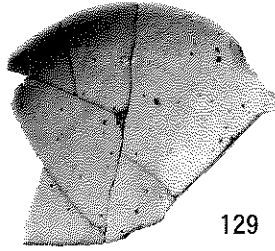
132



131



133



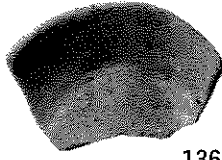
129



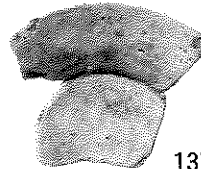
135



138



136

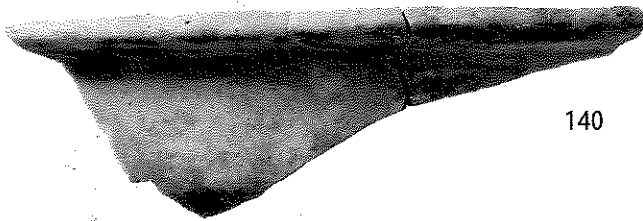


137

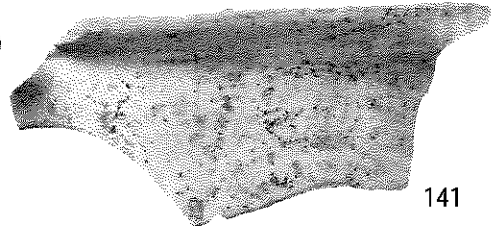


134

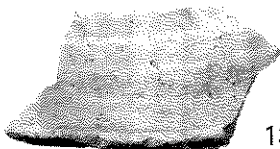
土師器 5



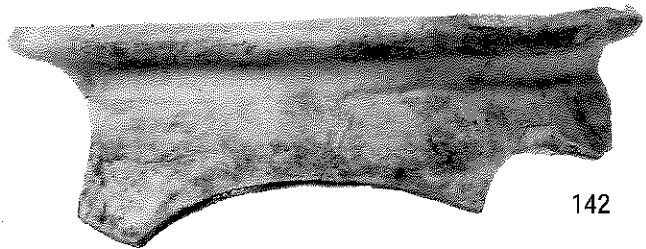
140



141

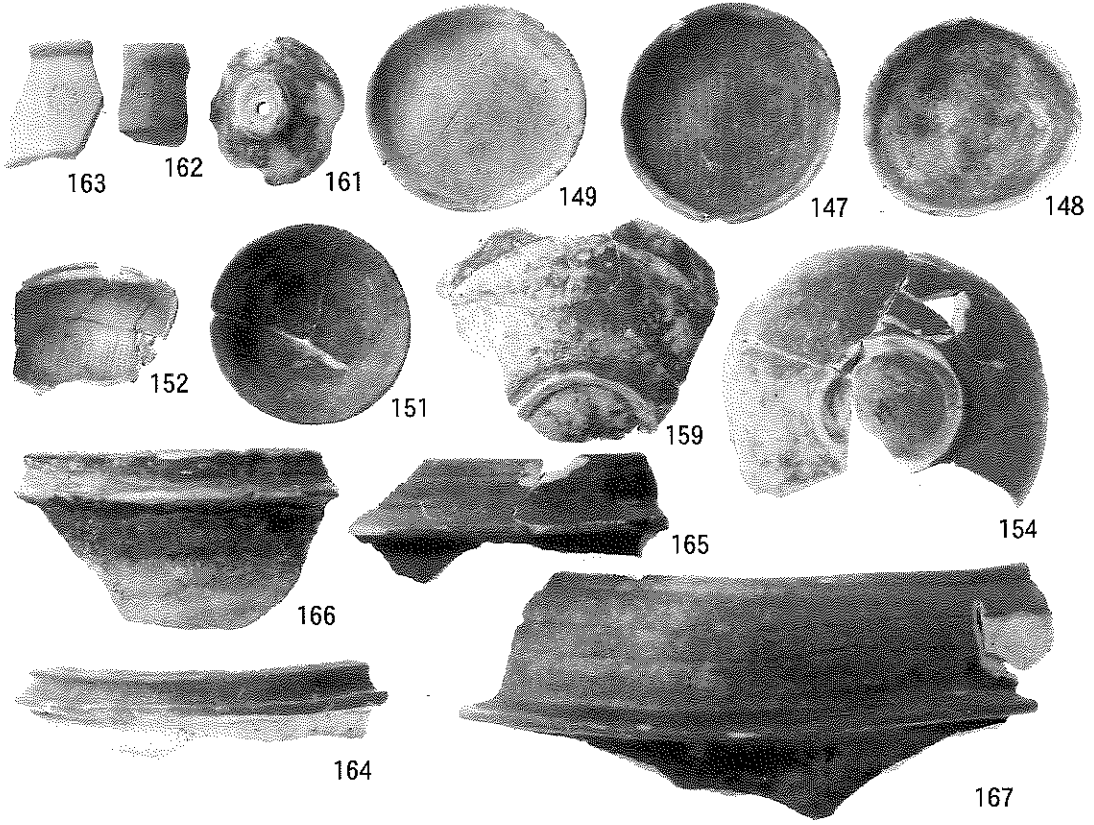


139

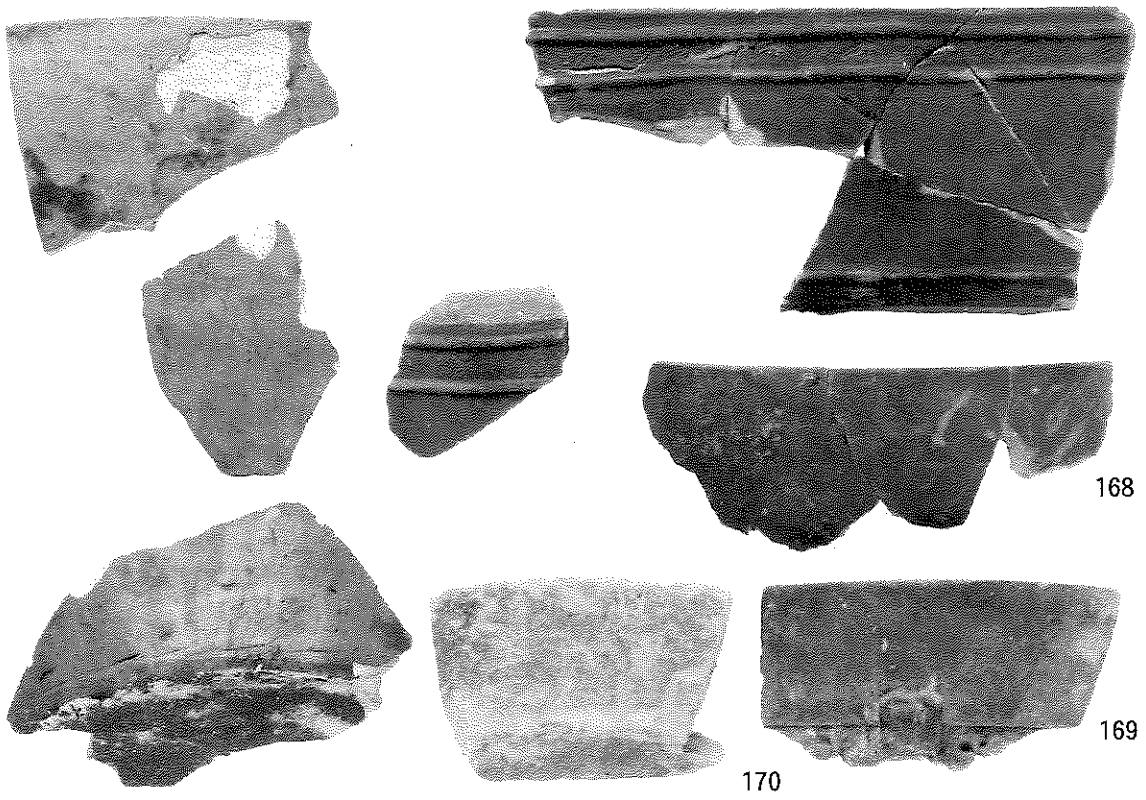


142

土師質製品



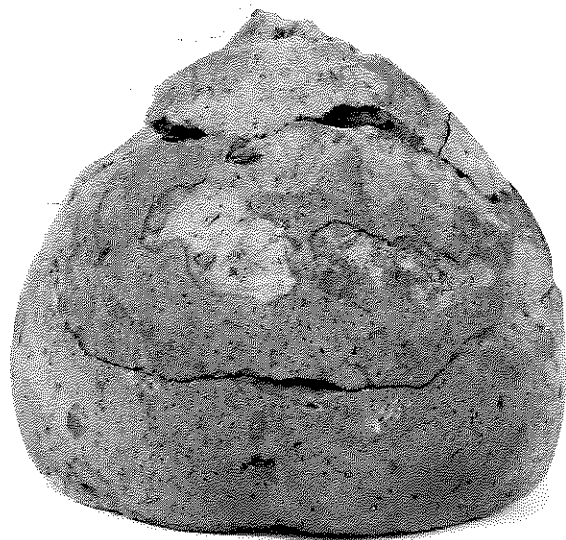
瓦器・瓦質製品 1



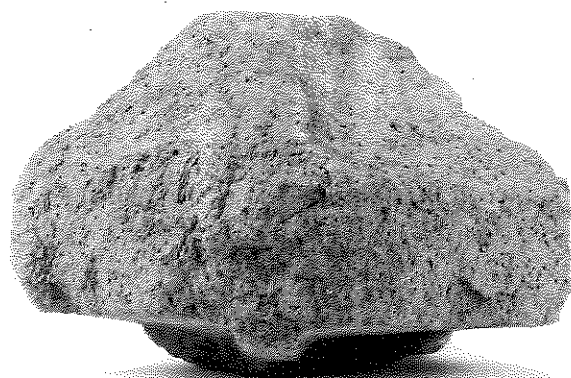
瓦質製品 2



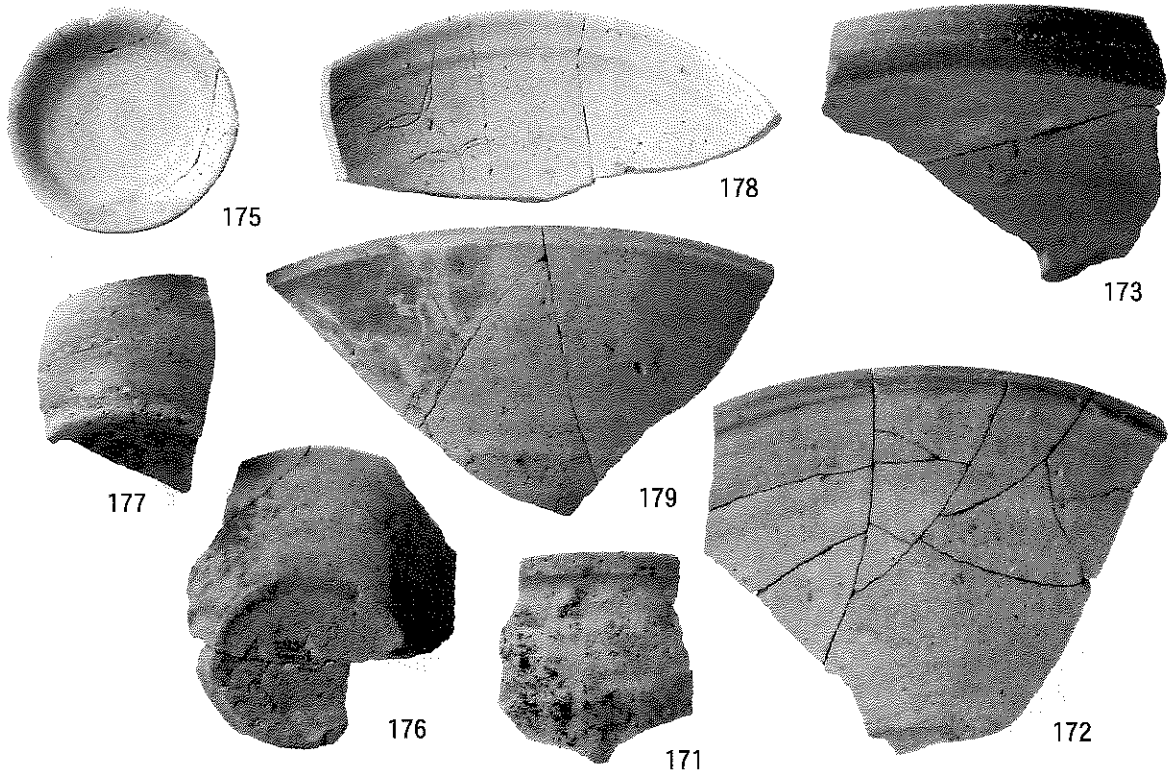
瓦質製品 3



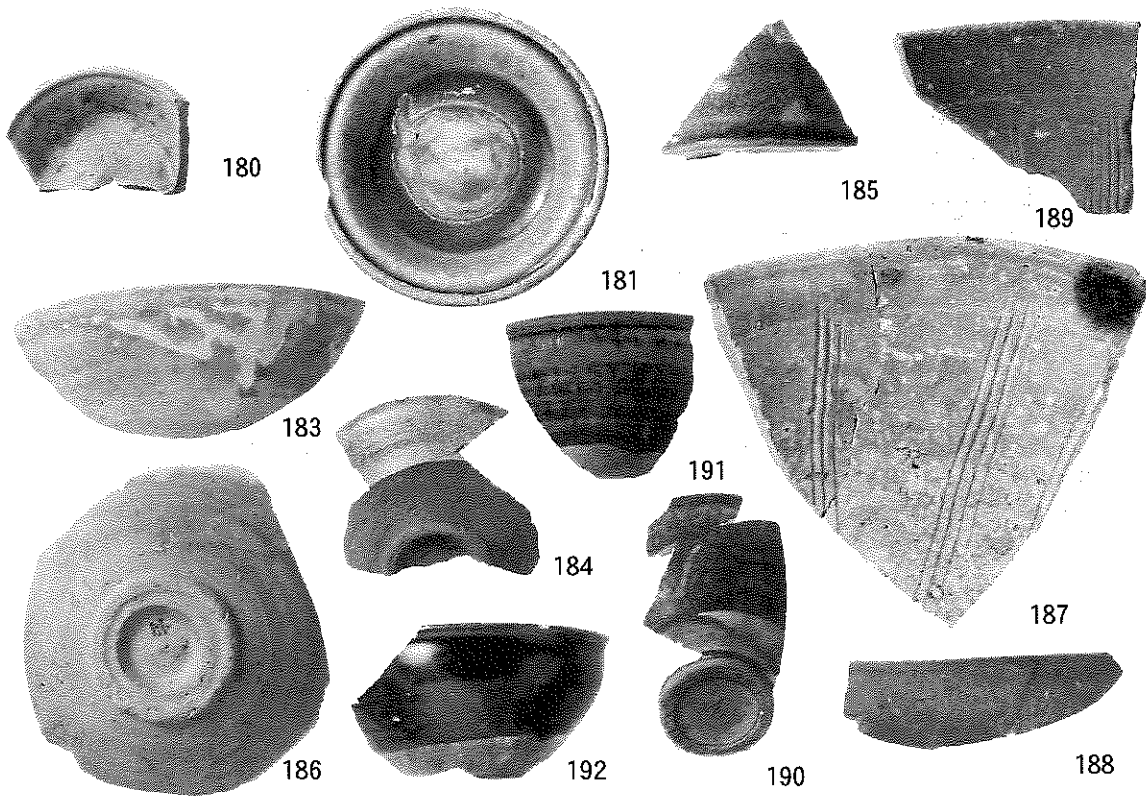
瓦質製品 4 (五輪塔空輪)

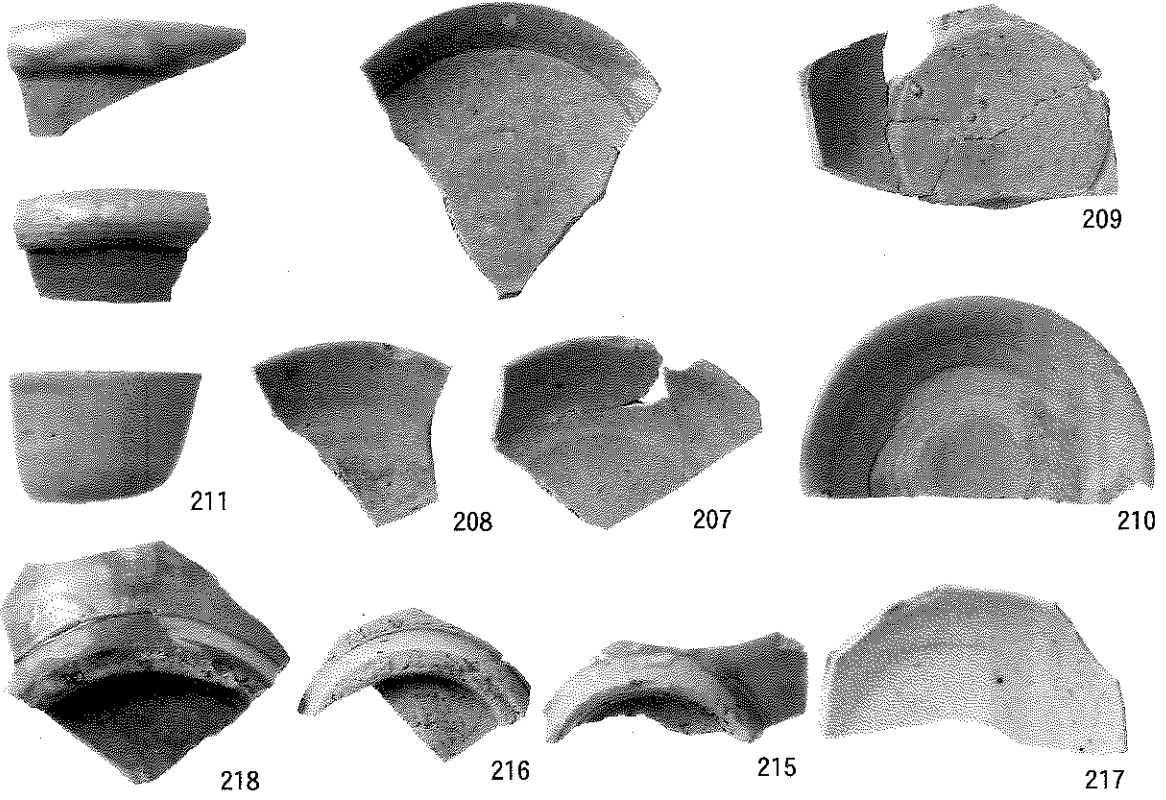


石塔



須恵器・灰釉陶器

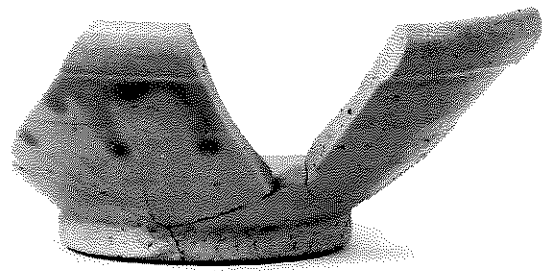




輸入陶磁器 1



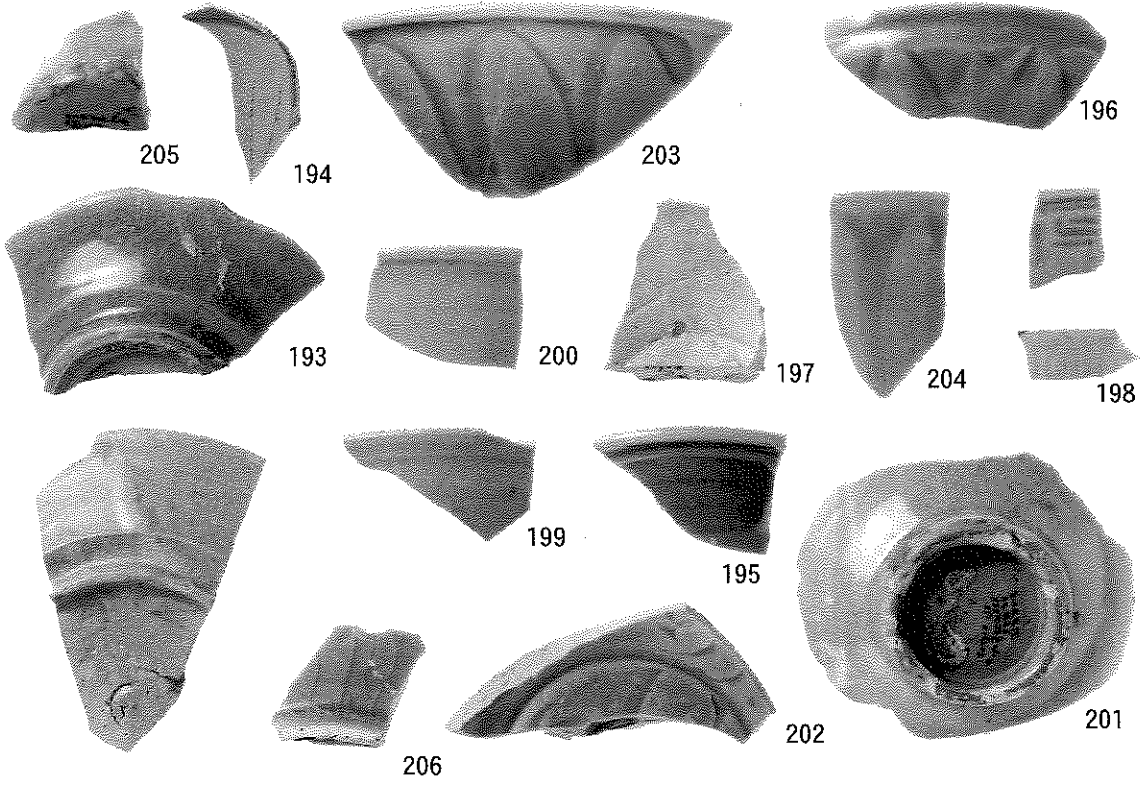
輸入陶磁器 2



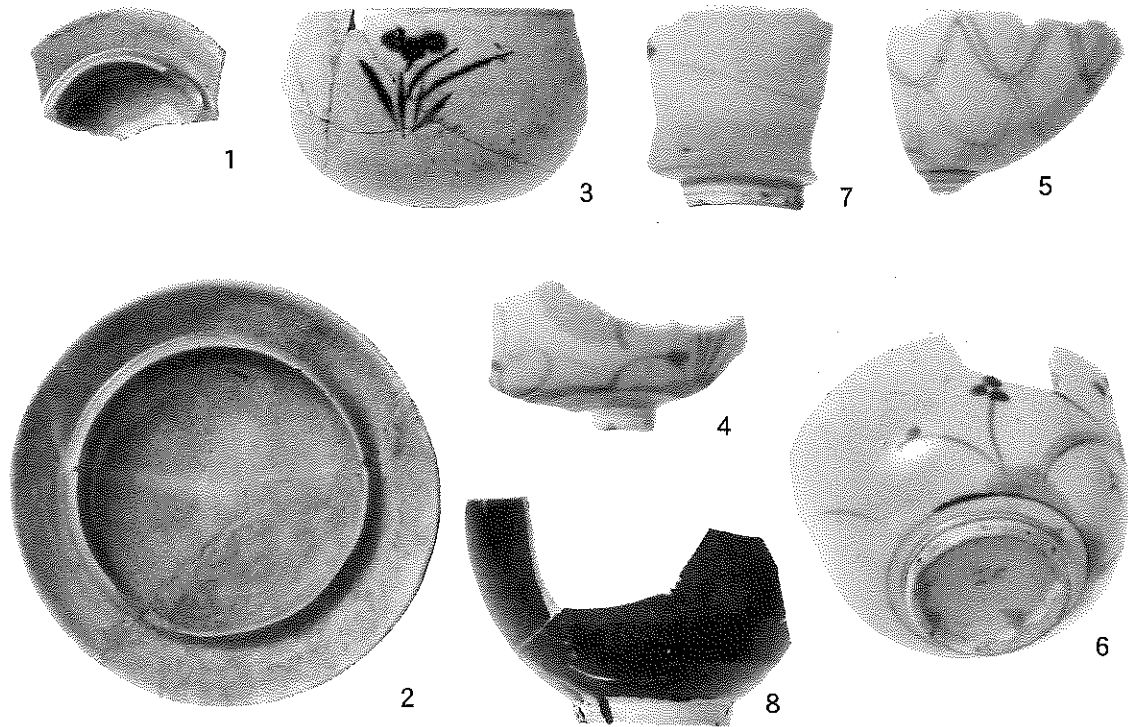
214

輸入陶磁器 3

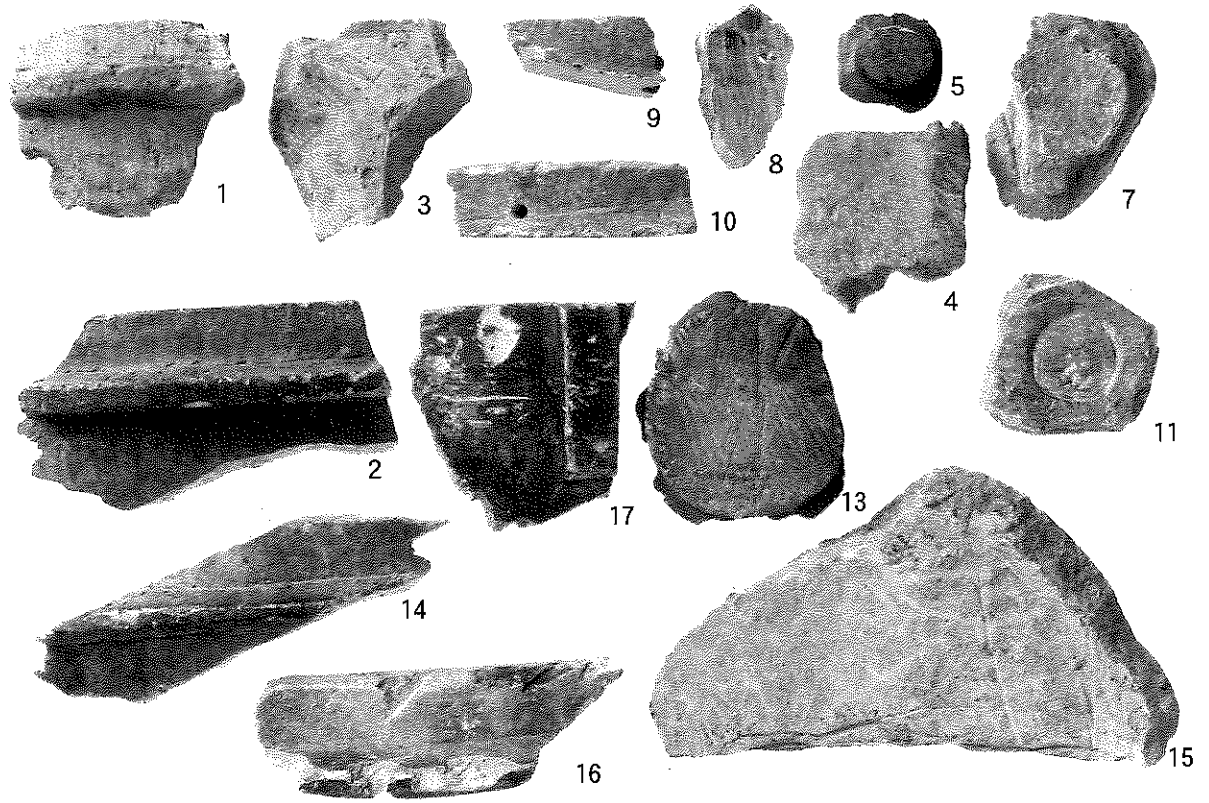
213



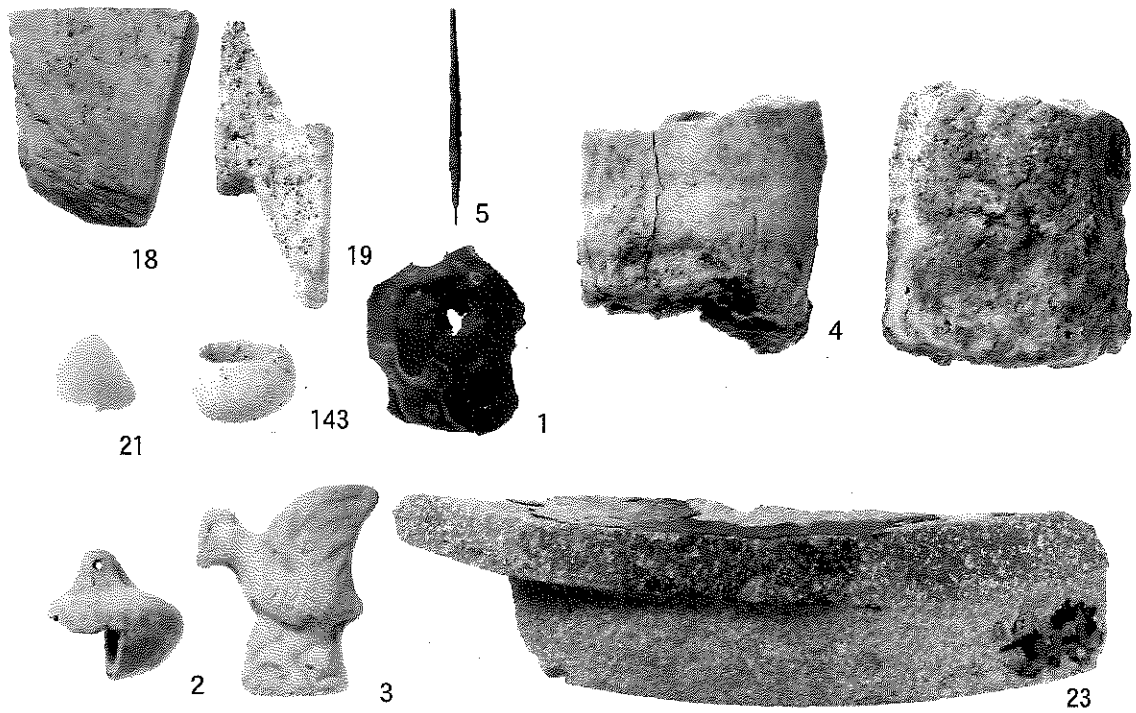
輸入陶磁器 4



近世陶磁器



滑石製品



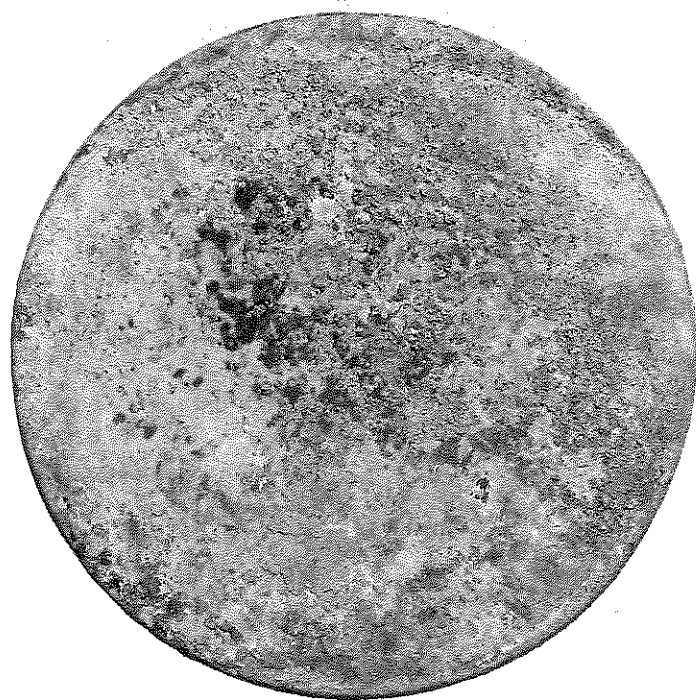
石製品他

鏡 背



1

鏡 面



1

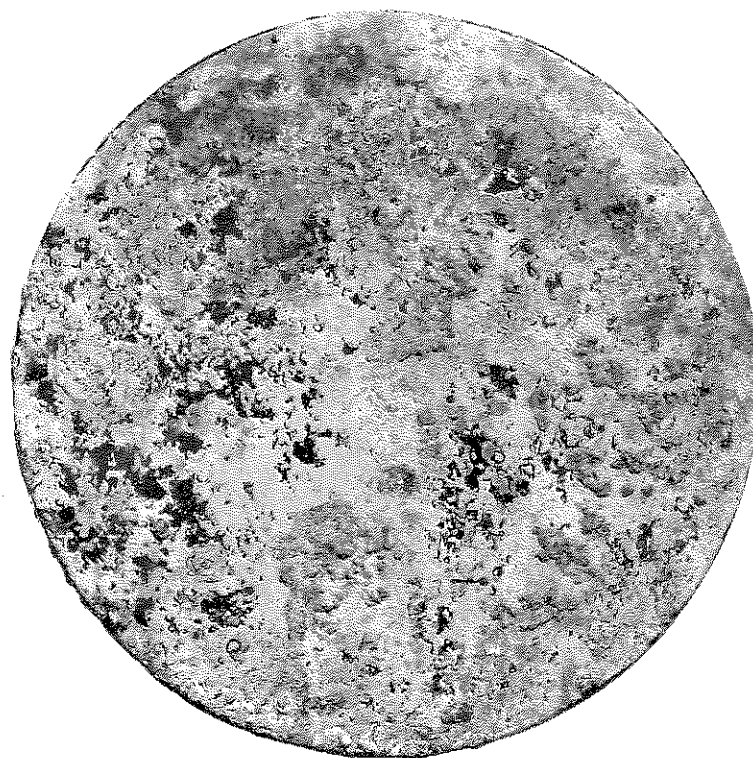
山吹双鳥鏡 (青銅製)

鏡 背



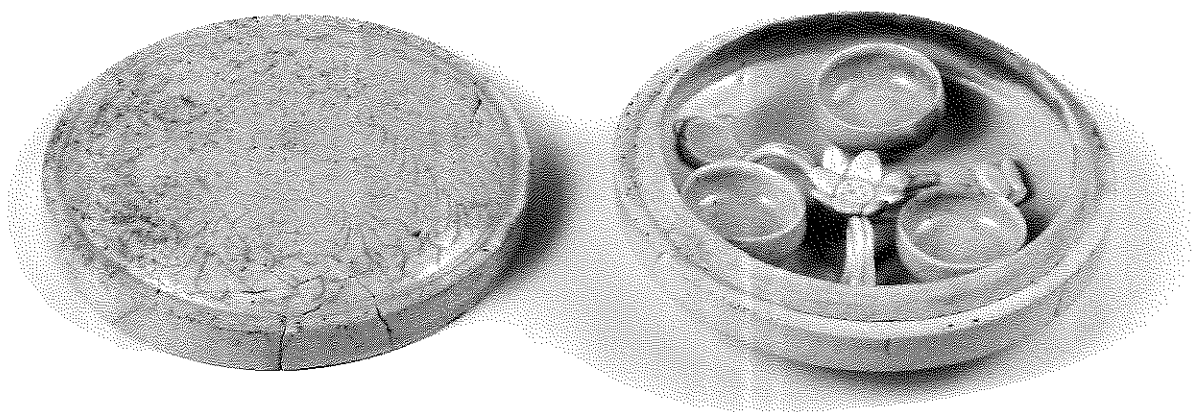
2

鏡 面



2

秋草蝶鳥鏡（白銅製）



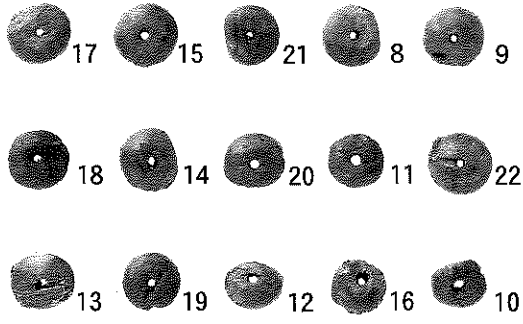
3

青白磁刻花牡丹文子持合子

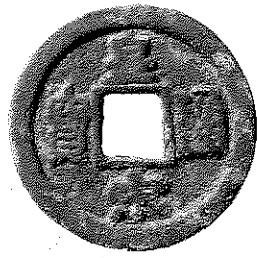


4

青白磁印花蓮華文小壺



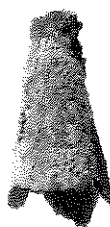
数珠玉 (木製)



28 錢貨 [皇宋通宝]



26



27

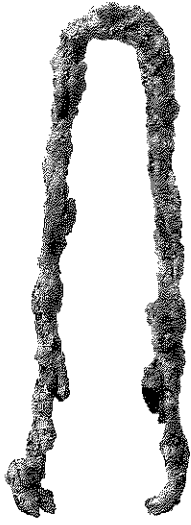


26



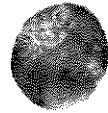
27

青銅製品 (瓔珞)



7

毛抜き (鉄製)

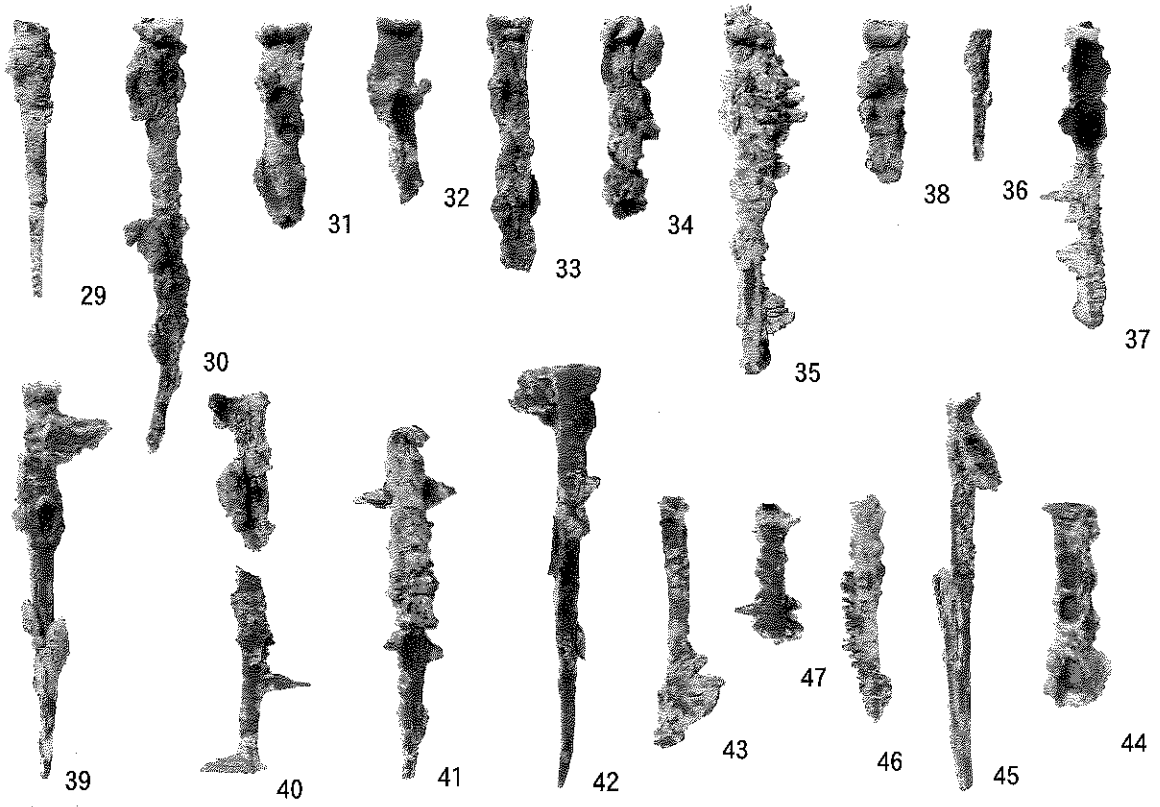


25

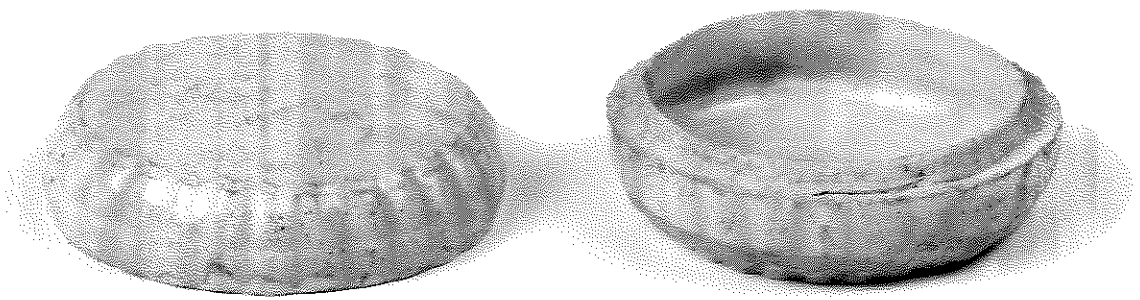
小玉 (鉛ガラス製)



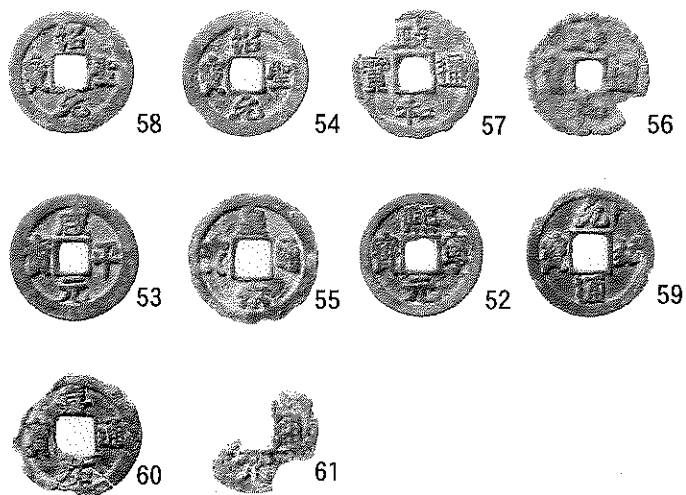
埋納壙 SX5501副納品



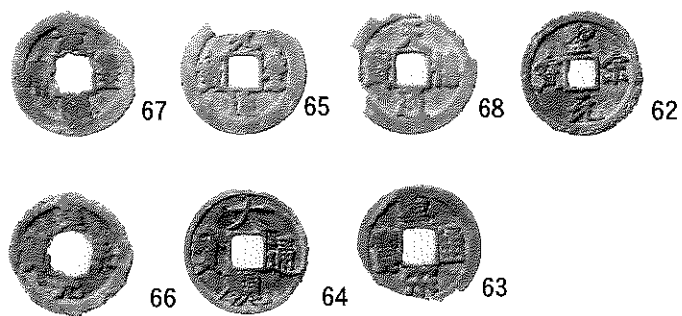
鉄釘類



青白磁印花文合子



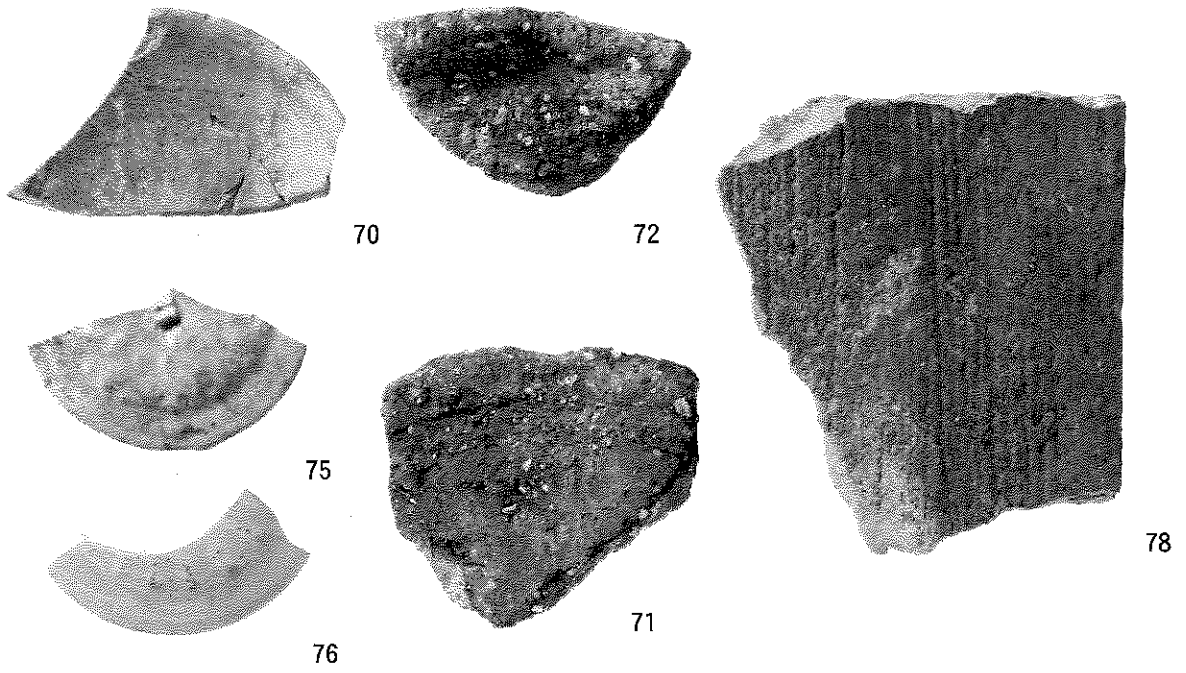
銭貨(10枚)



銭貨(7枚)



経筒外容器(渥美産)



瓦器皿・粗製土器・青白磁刻花文小壺蓋・平瓦



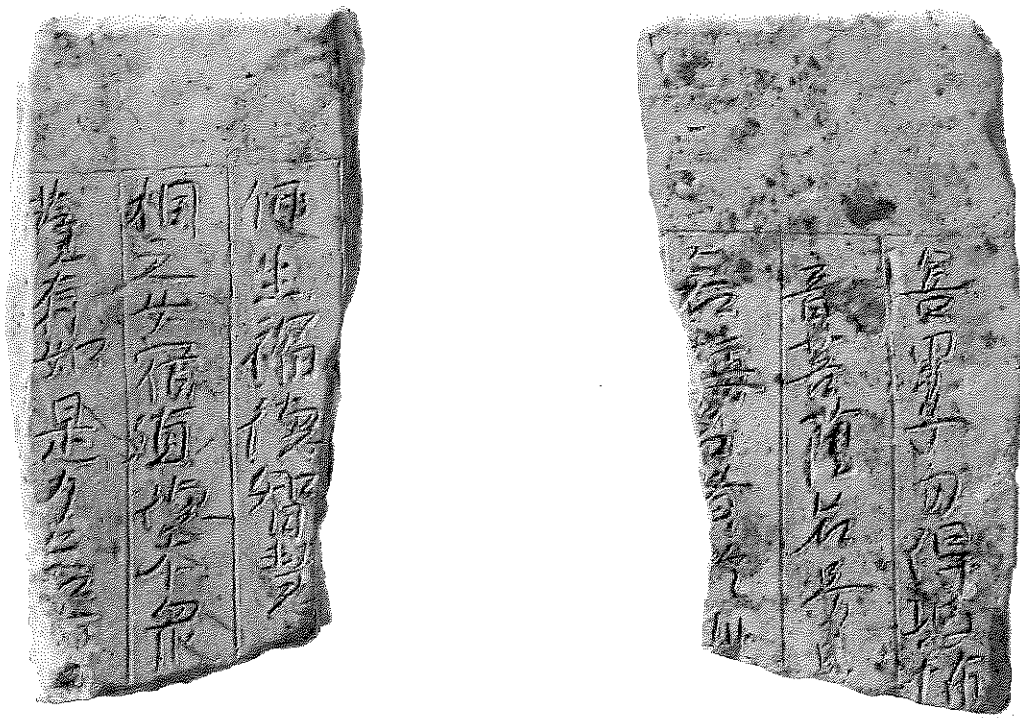
74

瓦質経筒外容器

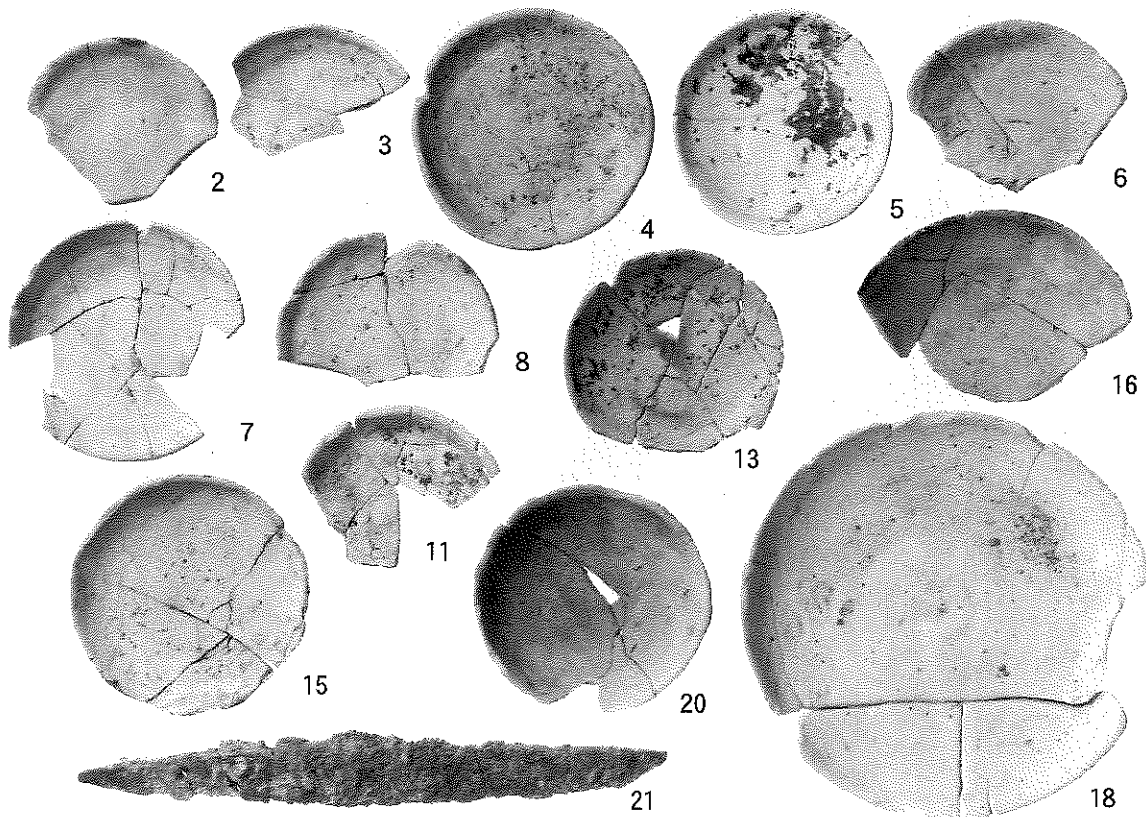


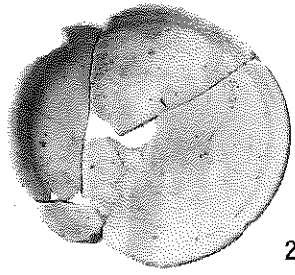
74

左外容器文字部分拡大

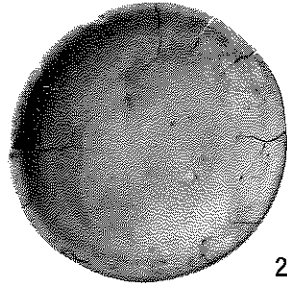


瓦経

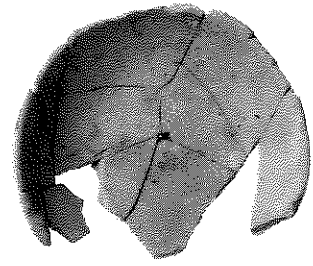




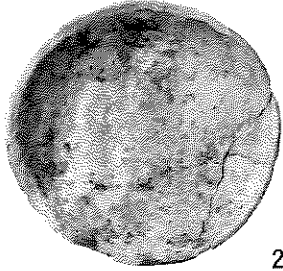
22



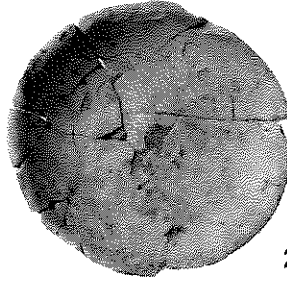
23



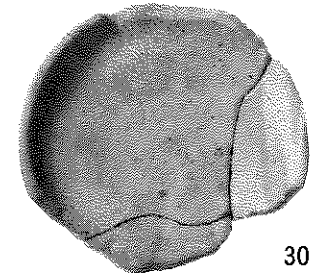
24



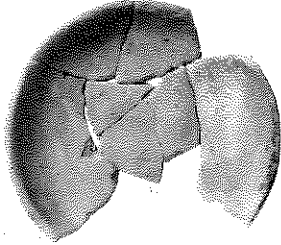
27



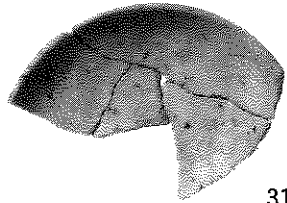
28



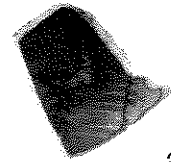
30



29

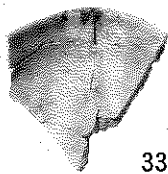


31



32

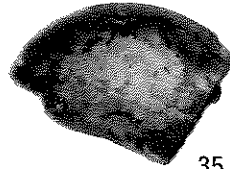
SX4302



33



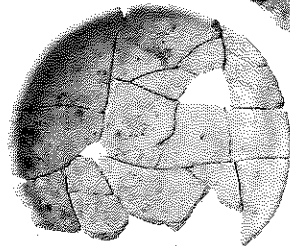
34



35



36



37



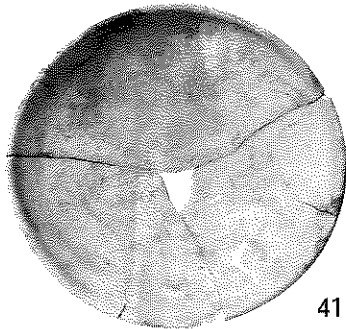
38



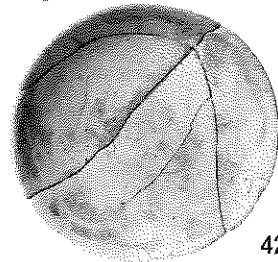
40



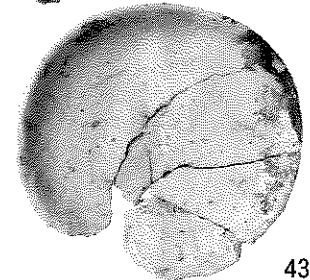
39



41

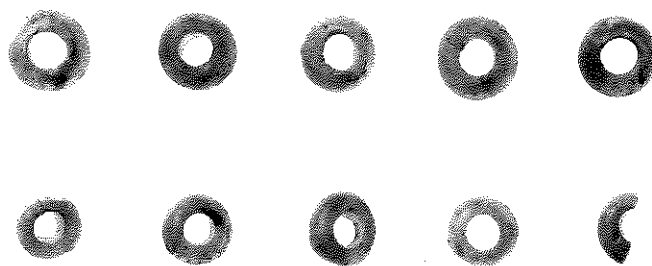


42



43

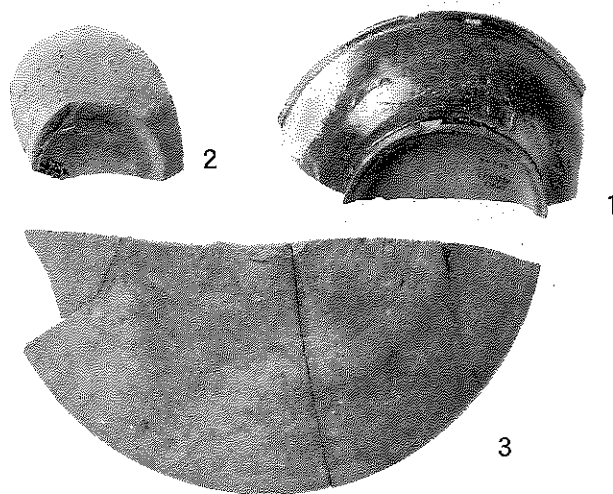
SX4303



小玉(鉛ガラス製)



漆箔断片(光背頭光部)



創建前遺物

白川金色院跡

発掘調査報告書

—宇治市文化財調査報告第6冊—

発行者 宇治市教育委員会

編集 宇治市歴史資料館

〒611-0023 宇治市折居台1-1

TEL (0774) 39-9260

印刷 有限会社 新進堂印刷所

〒611-0021 宇治市宇治妙楽9

TEL (0774) 22-3024



The Board of Education of Uji City